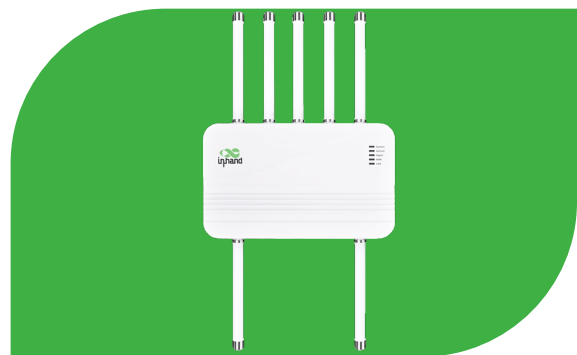


Connect beyond Boundaries

5G ODU2002 Series

- 5G
- Security
- Outdoor IP67
- Cloud-Managed



5G cellular technology revolutionizes network flexibility and convenience, enabling enterprises to effortlessly establish high-speed connectivity within minutes. This not only enhances operational efficiency but also elevates competitiveness in the realm of digital business development.

Whether in bustling cities, remote villages, outdoor settings, or challenging conditions, our cloud-managed 5G ODU ensures high-speed access and robust protection, delivering a global network that is fast, convenient, efficient, and secure.

Paired with the InCloud Manager, this solution transforms into a cloud-managed networking marvel, offering high-speed, secure network access, along with simple and convenient management services to empower your core business.



Features and Advantages

Unleash the Power of 5G

The ODU2002 brings you high-speed Internet without waiting. With blazing-fast 5G, download speeds of up to 4.76Gbps, upload speeds of up to 1.25Gbps, and the ability to fall back to high-speed LTE Cat 19.



Worry-free Connectivity

The ODU2002 ensures "always-online" connectivity with features such as 5G/wired backup, cellular link failover, dual SIM switching, optional eSIM, multi-layer link detection, and self-recovery. This guarantees network stability and minimizes the risk of network failure.



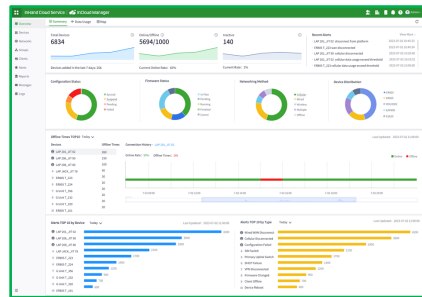
Harsh outdoor environments

The ODU2002 boasts an IP67 rating, with wide temperature tolerance. It offers GPS, PoE power reception, an external high-performance 5G antenna, and flexible wall/pole installation. These features ensure exceptional performance, especially in challenging outdoor environments.



Cloud-Managed Networking Solution

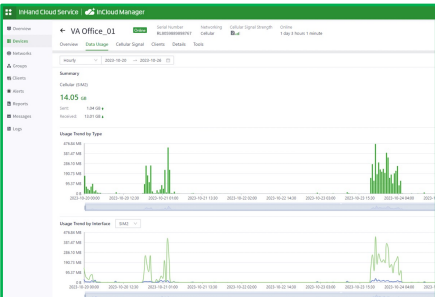
The 5G ODU, paired with the InCloud Manager, empowers effortless cloud management of distributed sites at scale. Enjoy real-time network monitoring and heightened management efficiency from any location, breaking free from constraints.



Take control

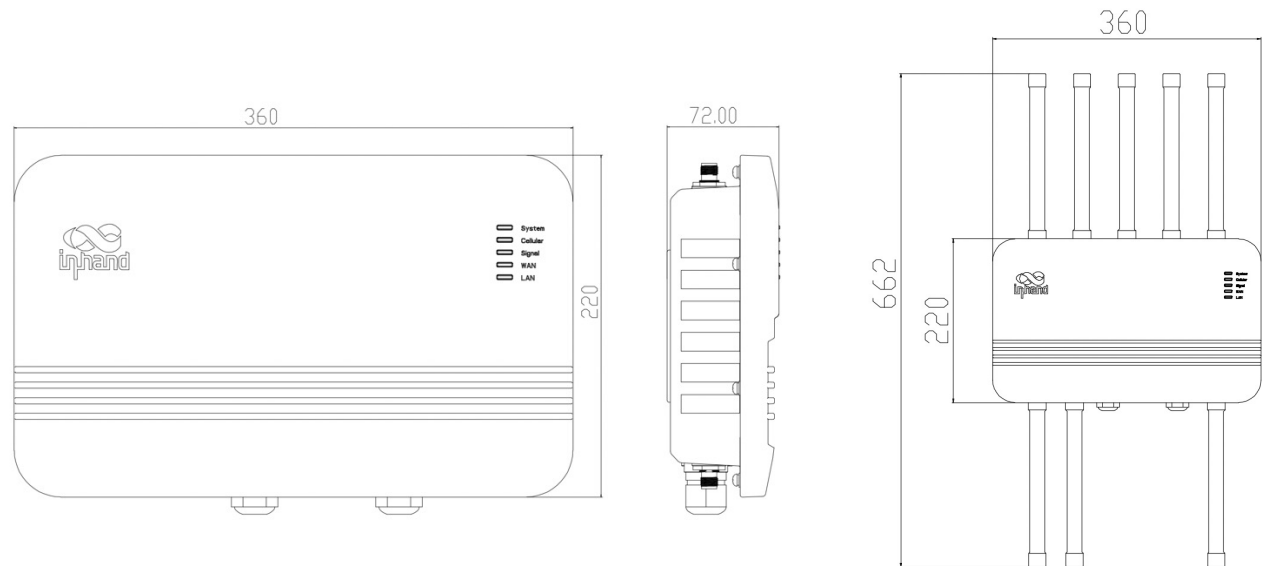
ID	Device Name	Serial Number	MAC Address	IP Address	Product	Version	Signal	CCD	State	Config Status	Remote State
1	VA Office_01	888888888888	888888888888	192.168.1.1	5G ODU	1.0.0	4G	4G	Normal	Completed	Normal
2	VA Office_02	888888888888	888888888888	192.168.1.2	5G ODU	1.0.0	4G	4G	Normal	Completed	Normal
3	VA Office_03	888888888888	888888888888	192.168.1.3	5G ODU	1.0.0	4G	4G	Normal	Completed	Normal
4	VA Office_04	888888888888	888888888888	192.168.1.4	5G ODU	1.0.0	4G	4G	Normal	Completed	Normal
5	VA Office_05	888888888888	888888888888	192.168.1.5	5G ODU	1.0.0	4G	4G	Normal	Completed	Normal
6	VA Office_06	888888888888	888888888888	192.168.1.6	5G ODU	1.0.0	4G	4G	Normal	Completed	Normal
7	VA Office_07	888888888888	888888888888	192.168.1.7	5G ODU	1.0.0	4G	4G	Normal	Completed	Normal
8	VA Office_08	888888888888	888888888888	192.168.1.8	5G ODU	1.0.0	4G	4G	Normal	Completed	Normal
9	VA Office_09	888888888888	888888888888	192.168.1.9	5G ODU	1.0.0	4G	4G	Normal	Completed	Normal
10	VA Office_10	888888888888	888888888888	192.168.1.10	5G ODU	1.0.0	4G	4G	Normal	Completed	Normal

Device information list



Traffic management

Dimensions (mm)



Product Specifications

5G ODU2002 Hardware Specifications

Hardware Platform

Throughput	Up to 2Gbps	Recommended No. of Users	200
------------	-------------	--------------------------	-----

Interfaces

Cellular	5G: 4.76Gbps (DL)/1.25Gbps (UL) 4G: 1.6Gbps (DL)/200Mbps (UL)	Ethernet Port	2*2.5 GbE RJ45 WAN/LAN switchable, Dual-LAN PoE in LAN Port
USB	1*Type-C 2.0	GNSS	GPS/GLONASS/Beidou/Galileo/QZSS
SIM	1*eSIM 2*SIM, Nano 4FF SIM slot, Hot plug	RESET	Reset button
Ground Terminal	1*GND	Lights	System, Cellular, Signal, WAN, LAN
Antenna Interface	TNC-type connectors 6*Sub 6, 1*GNSS, 1*Wi-Fi		

Wi-Fi

Radio Frequency	Single band 2.4GHz	Max Transmission Bandwidth	150Mbps
Transfer Protocol	802.11 b/g/n	Maximum Output Power	17dBm
Operating Model	AP mode		

Power Supply

Power	Power over Ethernet (PoE) - 802.3at	Power Consumption	≤15W
-------	-------------------------------------	-------------------	------

Mechanical Features

Installation	Wall mounting, pole mounting	Dimensions & Weight	360*220*72(mm), 2.87kg
Housing & Cooling	Metal & Fanless		

Environment

Working Temp.	-30° C to 70° C (-22° F to 158° F)	Storage Temp.	-40° C to 85° C (-40° F to 185° F)
Humidity	5% to 95% (non-condensing)	Ingress Protection	IP67
Salt Mist	IEC60068-2-52		

EMC

Electrostatic Discharge Immunity	EN61000-4-2, level 3	RFI Radio Frequency Immunity	EN61000-4-3, level 3
Electrical Fast Transient/ Burst Immunity	EN61000-4-4, level 3	Surge	EN61000-4-, level 3
Immunity to Conducted Disturbances	EN61000-4-6, level 3	RE/CE	Class A, Margin 3dB

Physical Properties

Shockproof	IEC60068-2-27	Vibration Resistance	IEC60068-2-6
Free Fall	IEC60068-2-32		

Certification

Certification	FCC, IC, PTCRB, VZW, ATT*, TMO*	Warranty	3 years
---------------	---------------------------------	----------	---------

5G ODU2002 Software Specifications

Cloud Management

InCloud Manager	Centralized management platform Simple and intuitive dashboard User-friendly management Batch upgrade and management
-----------------	---

Uplink Management

Network Access	Multiple network access, 5G/4G cellular network access, ETH network access
Dial-up Service	PPPoE, cellular automatic redial, dual SIM switching, APN configuration
Smart Link	Link backup/packet-by-packet load balancing among multiple links Real-time detection of link delay, jitter, and packet loss Supports priority adjustment

Security

VPN	IPSec VPN, L2TP VPN
Firewall	Access control, port mapping, port forwarding, MAC address filtering Firewall filtering based on MAC, IP, port, and protocol

Monitoring & Alerts

Dashboard	Device information, interface status, and refined traffic
Link Monitoring	Link delay, jitter, packet loss, and throughput monitoring
Cellular Signal	Real-time view of cellular signal strength, RSSI, RSRP, RSRQ, SINR
Data Security	System logs, diagnostic logs, device events, email alerts

Network Functions

IP Protocol	IPv4/IPv6*
IP Application	VLAN, DHCP server/client, DNS, DDNS, fixed address assignment, IP passthrough
Interface Management	Duplex mode, link negotiation rate, interface enable
Wi-Fi	Supports 2.4G Wi-Fi
Policy Management	Policy routing, traffic shaping
Self Recovery	Built-in software and hardware watchdog, self-healing equipment operation failure, to ensure the equipment maintains high availability

Remote Maintenance

Remote Access Control	Supports Web/Cli remote access
Cloud Connection	Remote maintenance of PCs, monitoring equipment, servers, etc.
Network Diagnostics	Ping, Traceroute, network packet capture tools, diagnostic logs
Configuration Backup	Supports configuration import and export

Note: The functions marked with * are not available yet.

Ordering Guide

Model		Model code: ODU2002-<WMNN>
		<WMNN>: Type & Module
ODU2002-NAVA	(For North America, Verizon, ATT) 5G Sub 6: n2/5/7/12/14/25/30/41/48/66/71/77/78 LTE-FDD: B2/4/5/7/12/13/14/17/25/26/29/30/66/71 LTE-TDD: B41/46/48 WCDMA: B2/4/5	
ODU2002-NATM	(For North America, T-Mobile) 5G Sub 6: n25/41/66/71 LTE FDD: B2/4/5/12/66/71 LTE TDD: B41 LAA:B46	
ODU2002-EUNR	(For Europe/Australia/Asia) 5G Sub 6: n1/3/5/7/8/20/28/38/40/41/71/77/78/79 LTE FDD: B1/3/5/7/8/20/28/32/71 LTE TDD: B38/40/41/42/43	

InHand Cloud-Managed Networking Solution

Our solution encompasses cloud-managed edge routers, Wi-Fi access points, switches, 5G FWA/ODU cellular routers, and the InCloud Manager SaaS. By integrating top-tier IT management, IoT, 5G, and other technologies, we provide fast, secure, and user-friendly network solutions globally, enabling businesses to unlock boundless growth opportunities.



InCloud Manager

- Centralized management
- Efficient zero touch deployment
- Simplified network configuration
- Multi-dimensional security
- Multiple intelligent strategies



5G SD-WAN Edge Router

- 5G (Sub 6)/ LTE CAT20
- Multilink Backup & Dual SIM failover
- 5*Gigabit Ethernet port, dual WAN
- 802.11 ac dual band, 1200Mbps
- SD-WAN, VLAN, VPN networking



5G FWA Router

- High-speed 5G, DL 4.76Gbps, UL 1.25Gbps
- 2.5G ETH, WAN/LAN
- Wi-Fi 6, 802.11 ax, 3600Mbps
- Link backup, redundancy, load balancing
- Easy to deploy, easy to install

About Us

InHand Networks is a leading IoT solutions provider founded in 2001, dedicated to driving digital transformation across industries and empowering customers to unlock their full potential and achieve accelerated growth.

We specialize in delivering industrial-grade connectivity solutions for diverse sectors, such as enterprise networks, industrial and building IoT, digital energy, smart commerce, and mobility. Our comprehensive product portfolio and services cater to various applications worldwide, including smart manufacturing, smart grid, intelligent transportation, smart retail, etc. With a global footprint spanning over 60 countries, we serve customers in China, the United States, France, Germany, the United Kingdom, Italy, and beyond.



43671 Trade Center Place, Suite 100, Dulles,
VA 20166, USA
T: +1 (703) 348-2988
E: info@inhand.com
www.inhand.com