



BLACK BOX



AUGUST 2009

LMC5101A
LMC5201A

Desktop Chassis Series

Operation Manual



CUSTOMER SUPPORT INFORMATION

Order toll-free in the U.S.: **877-877-BBOX** (outside U.S. call **724-746-5500**)
FREE technical support, 24 hours a day, 7 days a week; Call **877-877-2269** or fax **724-746-0746**
Mail order: **Black Box Corporation**, 1000 Park Drive, Lawrence, PA 15055-1018
Web site: www.blackbox.com • E-mail: info@blackbox.com

FCC and Industry Canada RF Interference Statements

1-Slot Desktop Chassis (AC)

Class A Digital Device. This equipment has been tested and found to comply with the limits for a Class A computing device pursuant to Part 15 of the FCC Rules. These limits are designed to provide reasonable protection against harmful interference in a residential installation. However, there is no guarantee that interference will not occur in a particular installation. This equipment generates, uses, and can radiate radio frequency energy, and, if not installed and used in accordance with the instructions, may cause harmful interference to radio communications. If this equipment does cause harmful interference to radio or telephone reception, which can be determined by turning the equipment off and on, the user is encouraged to try to correct the interference by one of the following measures:

- Reorient or relocate the receiving antenna.
- Increase the separation between the equipment and receiver.
- Connect the equipment into an outlet on a circuit different from that to which the receiver is connected.
- Consult an experienced radio/TV technician for help.

CAUTION

Changes or modifications not expressly approved by the party responsible for compliance could void the user's authority to operate the equipment.

To meet FCC requirements, shielded cables and power cords are required to connect this device to a personal computer or other Class A certified device.

This digital apparatus does not exceed the Class A limits for radio noise emission from digital apparatus set out in the Radio Interference Regulation of Industry Canada.

2-Slot Desktop Chassis (AC)

Class B Digital Device. This equipment has been tested and found to comply with the limits for a Class B computing device pursuant to Part 15 of the FCC Rules. These limits are designed to provide reasonable protection against harmful interference in a residential installation. However, there is no guarantee that interference will not occur in a particular installation. This equipment generates, uses, and can radiate radio frequency energy, and, if not installed and used in accordance with the instructions, may cause harmful interference to radio communications. If this equipment does cause harmful interference to radio or telephone reception, which can be determined by turning the equipment off and on, the user is encouraged to try to correct the interference by one of the following measures:

- Reorient or relocate the receiving antenna.
- Increase the separation between the equipment and receiver.
- Connect the equipment into an outlet on a circuit different from that to which the receiver is connected.
- Consult an experienced radio/TV technician for help.

CAUTION

Changes or modifications not expressly approved by the party responsible for compliance could void the user's authority to operate the equipment.

To meet FCC requirements, shielded cables and power cords are required to connect this device to a personal computer or other Class B certified device.

This digital apparatus does not exceed the Class B limits for radio noise emission from digital apparatus set out in the Radio Interference Regulation of Industry Canada.

Normas Oficiales Mexicanas (NOM) Electrical Safety Statement

Instrucciones de Seguridad

1. Todas las instrucciones de seguridad y operación deberán ser leídas antes de que el aparato eléctrico sea operado.
2. Las instrucciones de seguridad y operación deberán ser guardadas para referencia futura.
3. Todas las advertencias en el aparato eléctrico y en sus instrucciones de operación deben ser respetadas.
4. Todas las instrucciones de operación y uso deben ser seguidas.
5. El aparato eléctrico no deberá ser usado cerca del agua—por ejemplo, cerca de la tina de baño, lavabo, sótano mojado o cerca de una alberca, etc.
6. El aparato eléctrico debe ser usado únicamente con carritos o pedestales que sean recomendados por el fabricante.
7. El aparato eléctrico debe ser montado a la pared o al techo sólo como sea recomendado por el fabricante.
8. Servicio—El usuario no debe intentar dar servicio al equipo eléctrico más allá a lo descrito en las instrucciones de operación. Todo otro servicio deberá ser referido a personal de servicio calificado.
9. El aparato eléctrico debe ser situado de tal manera que su posición no interfiera su uso. La colocación del aparato eléctrico sobre una cama, sofá, alfombra o superficie similar puede bloquear la ventilación. No se debe colocar en libreros o gabinetes que impidan el flujo de aire por los orificios de ventilación.
10. El equipo eléctrico debe ser situado fuera del alcance de fuentes de calor como radiadores, registros de calor, estufas u otros aparatos (incluyendo amplificadores) que producen calor.
11. El aparato eléctrico deberá ser conectado a una fuente de poder sólo del tipo descrito en el instructivo de operación, o como se indique en el aparato.
12. Precaución debe ser tomada de tal manera que la tierra física y la polarización del equipo no sea eliminada.
13. Los cables de la fuente de poder deben ser guiados de tal manera que no sean pisados ni pellizcados por objetos colocados sobre o contra ellos, poniendo particular atención a los contactos y receptáculos donde salen del aparato.
14. El equipo eléctrico debe ser limpiado únicamente de acuerdo a las recomendaciones del fabricante.
15. En caso de existir, una antena externa deberá ser localizada lejos de las líneas de energía.
16. El cable de corriente deberá ser desconectado cuando el equipo no sea usado por un largo período de tiempo.

17. Cuidado debe ser tomado de tal manera que objetos líquidos no sean derramados sobre la cubierta u orificios de ventilación.
18. Servicio por personal calificado deberá ser provisto cuando:
 - a. El cable de poder o el contacto ha sido dañado; u
 - b. Objetos han caído o líquido ha sido derramado dentro del aparato; o
 - c. El aparato ha sido expuesto a la lluvia; o
 - d. El aparato parece no operar normalmente o muestra un cambio en su desempeño; o
 - e. El aparato ha sido tirado o su cubierta ha sido dañada.

Table of Contents

FCC and Industry Canada RF Interference Statements ii

 1-Slot Desktop Chassis (AC) ii

 2-Slot Desktop Chassis (AC) iii

Normas Oficiales Mexicanas (NOM) Electrical Safety Statementiv

About the Desktop Chassis Series 1

Part Number..... 1

Installing the Desktop Chassis Series..... 1

Configuring and Installing Modules..... 2

Specifications..... 3

Black Box Customer Service 3

Electrostatic Discharge Precautions..... 4

Safety Certifications 5

About the Desktop Chassis Series

The Desktop Chassis Series includes 1-slot and 2-slot modular chassis for use with L1 Series modules. When installed in a Desktop Chassis Series, the module is unmanaged, unless it has on-board SNMP logic (i.e. Managed Media Converter Module 10/100-II). Each Desktop Chassis Series features an internal 100-240 VAC $\pm 10\%$ power supply.

Part Number

LMC5101A	1-Slot Desktop Chassis (AC)
LMC5201A	2-Slot Desktop Chassis (AC)

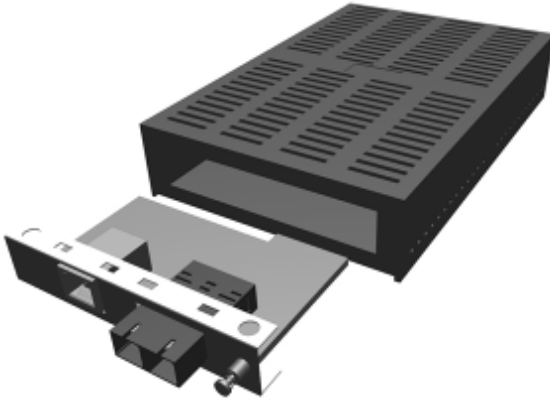
Installing the Desktop Chassis Series

Use the Desktop Chassis Series as a table-top chassis, or mount it into an equipment rack or to a wall surface with the appropriate brackets (not included). Install the Desktop Chassis Series chassis by placing it on a flat surface. Make sure to leave adequate space on top of the unit to accommodate cooling.

Configuring and Installing Modules

Use the Desktop Chassis Series as a table-top chassis, or mount it into an equipment rack or to a wall surface with the appropriate brackets (not included). Install the Desktop Chassis Series chassis by placing it on a flat surface. Make sure to leave adequate space on top of the unit to accommodate cooling.

Black Box recommends turning the chassis' power OFF before proceeding. To install a module, slide the module into the chassis until the module is firmly seated in the backplane. Secure the module to the chassis by tightening the captive screw. Attach the network cables between the module and other devices that will be interconnected. Plug the chassis into a power source.



Installing a module into a 1-Slot Desktop Chassis (AC)

NOTE
Refer to the installation guide shipped with the Managed Media Converter Module for more configuration information.

Specifications

Environmental

Operating Temperature: 32° to 122° F (0° to 50° C)

Storage Temperature: 4° to 158° F (-20° to 70° C)

Humidity: 5 to 95% (non-condensing)

Power Consumption

AC Input: 100 to 240 VAC \pm 10%, 50/60 Hz, 1A max.

Dimensions

1-Slot: 1.55"H x 4.75"L x 7.31"D (3.94 cm H x 12.07 cm L x 18.57 cm D)

2-Slot: 2.30"H x 4.75"L x 7.31"D (5.84 cm H x 12.07 cm L x 18.57 cm D)

Heat Generation

51 BTU/hr. maximum

Black Box Customer Service

Order toll-free in the U.S.: Call 877-877-BBOX
(outside U.S. call 724-746-5500)

Free technical support, 24 hours a day, 7 days a week.
Call: 877-877-2269 or **Fax:** 724-746-0746

Mail order: Black Box Corporation
1000 Park Drive, Lawrence, PA 15055-1018

Web site: www.blackbox.com

E-mail: info@blackbox.com

Electrostatic Discharge Precautions

Electrostatic discharge (ESD) can cause damage to any product, add-in modules or stand alone units, containing electronic components. Always observe the following precautions when installing or handling these kinds of products

1. Do not remove unit from its protective packaging until ready to install.
2. Wear an ESD wrist grounding strap before handling any module or component. If the wrist strap is not available, maintain grounded contact with the system unit throughout any procedure requiring ESD protection.
3. Hold the units by the edges; do not touch the electronic components or gold connectors.
4. After removal, always place the boards on a grounded, static-free surface, ESD pad or in a proper ESD bag. Do not slide the modules or stand alone units over any surface.



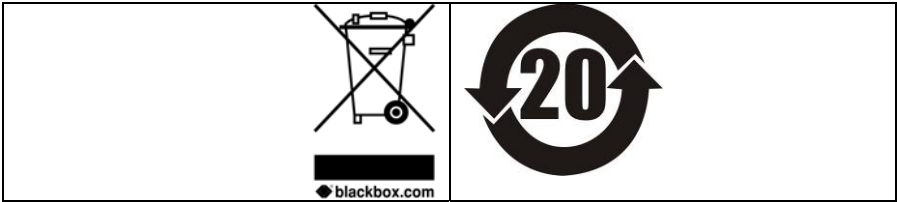
WARNING! Integrated circuits and fiber optic components are extremely susceptible to electrostatic discharge damage. Do not handle these components directly unless you are a qualified service technician and use tools and techniques that conform to accepted industry practices.

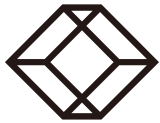
Safety Certifications

UL/CUL: Listed to Safety of Information Technology Equipment, including Electrical Business Equipment.



European Directive 2002/96/EC (WEEE) requires that any equipment that bears this symbol on product or packaging must not be disposed of with unsorted municipal waste. This symbol indicates that the equipment should be disposed of separately from regular household waste. It is the consumer’s responsibility to dispose of this and all equipment so marked through designated collection facilities appointed by government or local authorities. Following these steps through proper disposal and recycling will help prevent potential negative consequences to the environment and human health. For more detailed information about proper disposal, please contact local authorities, waste disposal services, or the point of purchase for this equipment.





BLACK BOX

