



The Bernese Mountain Dog case antenna is a 5G, emergency mobile hot spot with up to 9:1 configuration with 4X4 MIMO cellular, additional 2X2 MIMO cellular option, 2X2

MIMO Wi-Fi, and optional Bluetooth & GPS. This case is designed to provide on-the-go network solutions in areas where cellular infrastructure may be compromised. The rugged, high-performance antenna is tuned for low to mid-band frequencies for longer distance and rural/suburban areas to support first responders, critical communications, surveillance, covert operations, and more.

The Bernese Mountain Dog case uses shock absorption and impact resistant resin to reduce damage and loss of performance due to hard use.

Patented



Configurations 7:1 | 8:1 | 9:1

Emergency Communications | Primary & Failover | Remote Video Monitoring



Failover Ready

Dual SIM Capability

Long Lasting

Up to 18 Hour Battery Life

Durable

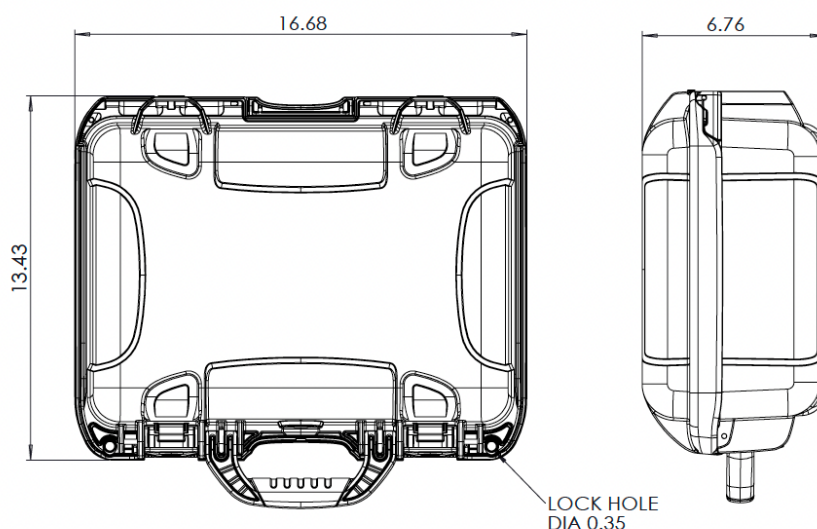
Shock Resistant Mobile Case

- UP TO 6X6 MIMO CELLULAR
- UP TO 2X2 MIMO WI-FI
- OMNI-DIRECTIONAL
- GPS & OPTIONAL BLUETOOTH
- 600 MHz - 6 GHz
- 15 in X 10.5 in X 6.2 in
- WI-FI 6 COMPATIBLE

Specifications

<i>Frequencies</i>			
4G/5G Cellular	617-894 MHz 1710-2700 MHz 3300-4000 MHz 5150-5925 MHz	Wi-Fi	2400-2483.5 MHz 4900-5900 MHz
<i>4G/5G Bands</i>			
North America	B2, B4, B5, B7, B12, B13, B14, B17, B25, B26, B29, B30, B41, B46, B48, B66, B71 n2, n5, n12, n25, n26, n41, n48, n66, n71, n77		
EMEA	B1, B3, B7, B20, B28, B42, B43, B46 n1, n3, n28, n77, n78		
<i>Mechanical</i>		<i>Environmental</i>	
Dimensions	16.7 inch x 13.4 inch x 6.8 inch	Operating Temperature	-30 °C to 85°C OR -22 °F to 180°F
RF Cable Length	18 inch Pigtails	Ingress Protection	IP67 for -A Version *when closed. IP54 for -G, -L, & -G2 Version *when all ports and lid are closed
Max Router Configuration	6 Cellular, 2 Wi-Fi, GPS	Max Router Dimensions	6" x 7" x 2.5"
<ul style="list-style-type: none"> Temperature range is for antenna only. Equipment installed inside the enclosure may have a different temperature range. *Openings in the enclosure for options like fans and power cords may reduce ingress protection even with covers installed. 			

Dimensions



Product Images G-Version



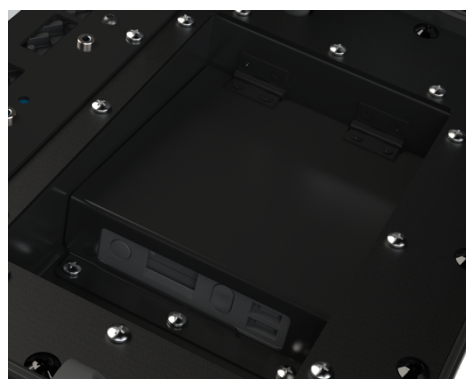
Product Images G2-Version



Hinge Door for Easy
Router Access



Quick Battery Access



Electrical Specifications

<i>ID & Unit</i>	<i>Port</i>	<i>Parameters</i>	<i>Typ.</i>
Radiated Efficiency (%)	CELL 1 thru 6	617-698 MHz	70
	CELL 1 thru 6	698-894 MHz	80
	CELL 1 thru 6	1710-2200 MHz	85
	CELL 1 thru 6	2200-2700 MHz	70
	CELL 1 thru 6	3300-4000 MHz	50
	CELL 1 thru 6	5150-5925 MHz	50
	GPS	1575.42 MHz	80
	Wi-Fi 1 thru 2	2400-2483.5 MHz	85
	Wi-Fi 1 thru 2	4900-5900 MHz	75
	Bluetooth	2400-2483.5 MHz	85
Peak Gain (dBi)	CELL 1 thru 6	617-698 MHz	2
	CELL 1 thru 6	698-894 MHz	5
	CELL 1 thru 6	1710-2200 MHz	7
	CELL 1 thru 6	2200-2700 MHz	6
	CELL 1 thru 6	3300-4000 MHz	7.5
	CELL 1 thru 6	5150-5925 MHz	8.5
	GPS	1575.42 MHz	6
	Wi-Fi 1 thru 2	2400-2483.5 MHz	7
	Wi-Fi 1 thru 2	4900-5900 MHz	8.5
	Bluetooth	2400-2483.5 MHz	7
Return Loss 50Ω (dB)	CELL 1 thru 6	617-698 MHz	7
	CELL 1 thru 6	698-894 MHz	9
	CELL 1 thru 6	1710-2200 MHz	12
	CELL 1 thru 6	2200-2700 MHz	7
	CELL 1 thru 6	3300-4000 MHz	6
	CELL 1 thru 6	5150-5925 MHz	6
	GPS	1575.42 MHz	12
	Wi-Fi 1 thru 2	2400-2483.5 MHz	12
	Wi-Fi 1 thru 2	4900-5900 MHz	9
	Bluetooth	2400-2483.5 MHz	13
Isolation (dB)	CELL 1 thru 6	617-894 MHz	10
	CELL 1 thru 6	1710-2200 MHz	18
	CELL 1 thru 6	2200-2700 MHz	22
	CELL 1 thru 6	3300-4000 MHz	27
	CELL 1 thru 6	5150-5925 MHz	30
	Wi-Fi	2400-2483.5 MHz	19
	Wi-Fi	4900-5900 MHz	30
	Bluetooth	2400-2483.5 MHz	20
Polarization (dBi)	CELL, Wi-Fi Bluetooth GPS		Linear Linear RHCP
Max Input Power (Watts)	CELL, Wi-Fi, Bluetooth		5

GNSS Preamp Gain (dB)	GPS		28
GNSS Preamp Voltage (V)	GPS		2.2 to 5.0
RF Connectors	CELL, GPS Wi-Fi, Bluetooth		SMA(M) RPSMA (M)
RF Cable Type	CELL, Wi-Fi, Bluetooth GPS		RG316 RG316 LSR100
<ul style="list-style-type: none"> CELL 1 thru 4 are grouped together for one modem with CELL 5 & 6 connected to the other modem. Isolation, return loss, and peak gain does not include cable loss. SMA connectors have a max torque of 3-5 in-lbs. NF connectors have a max torque of 6.2-9.7 inch lbs. Electrical specifications based on antenna mounted in the lid of the plastic enclosure. *Battery, router, and SIM Card are not included. Customers should contact Parsec's authorized distributors and VAR's listed on our website for a full list of routers and other options that will complete the Emergency Hot Spot. Parsec is currently phasing out inventory with LTE on our Cellular cables (now labeled CELL). For cables labeled LTE, please refer port "CELL" in the data sheets and installation instructions. 			

Ordering

Our Bernese MD antenna consists of a protective case with the antenna built into the lid.

Config.	Part Number	Description
7:1	PRO7MD4L2WG-L	4 Cellular, 2 Wi-Fi, GPS, Black Case with Antenna Build into Lid with AC Adapter (see antenna options for description)
	PRO7MD4L2WG-G	4 Cellular, 2 Wi-Fi, GPS, Black Case with Antenna Build into Lid with 27K Battery Needed (see antenna options for description)
	PRO7MD4L2WG-G2	4 Cellular, 2 Wi-Fi, GPS, Black Case with Antenna Build into Lid with 20K Battery Needed (see antenna options for description)
8:1	PRO8MD4L2WBG-L	4 Cellular, 2 Wi-Fi, Bluetooth, GPS, Black Case with Antenna Build into Lid with AC Adapter (see antenna options for description)
	PRO8MD4L2WBG-G	4 Cellular, 2 Wi-Fi, Bluetooth, GPS, Black Case with Antenna Build into Lid with 27K Battery Needed (see antenna options for description)
	PRO8MD4L2WBG-G2	4 Cellular, 2 Wi-Fi, Bluetooth, GPS, Black Case with Antenna Build into Lid with 20K Battery Needed (see antenna options for description)
9:1	PRO9MD6L2WG-L	6 Cellular, 2 Wi-Fi, GPS, Black Case with Antenna Build into Lid with AC Adapter (see antenna options for description)
	PRO9MD6L2WG-G	6 Cellular, 2 Wi-Fi, GPS, Black Case with Antenna Build into Lid with 27K Battery Needed (see antenna options for description)
	PRO9MD6L2WG-G2	6 Cellular, 2 Wi-Fi, GPS, Black Case with Antenna Build into Lid with 20K Battery Needed (see antenna options for description)

Part Number Key

Part number example for an 8:1 Bernese Mountain Dog antenna: PRO8MD4L2WBG

Description	Abbreviation	Part Number
All PRO Series	PRO	PRO
Number of Antennas in Housing/Configuration	8:1	PRO8
Antenna Abbreviation for Bernese Mountain Dog	MD	PRO8MD
Number of Cellular Elements	#L	PRO8MD4L
Number of Wi-Fi Elements	#W	PRO8MD4L2W
Bluetooth	#B	PRO8MD4L2WB
Number of GPS Elements	G	PRO8MD4L2WBG
Optional G Version - Includes the options listed	-G	PRO8MD4L2WBG-G
Optional G2 Version - Includes the options listed	-G2	PRO8MD4L2WBG-G2
Optional L Version - Includes the options listed	-L	PRO8MD4L2WBG-L
Custom case colors and connectors are available. For more information contact sales@parsec-t.com.		

Antenna Options

Description	PRO8MD4L2WG	-G Version	-L Version	-G2 Version
Antenna	YES	YES	YES	YES
Fan and Vent	NO	YES	YES	YES
AC Adapter	NO	NO	YES	NO
Barrel Connector	NO	YES	YES	NO
1x USB-C Connector	NO	NO	NO	YES
1x USB-A Adapter	NO	YES	YES	NO
4x RJ-45 Connectors	NO	YES	YES	YES
Router Mount Plate	NO	YES	YES	YES
Top Cover	NO	YES	YES	YES
27K Battery Tray	NO	YES	NO	NO
20K Battery Tray	NO	NO	NO	YES
Battery: ChargeTech 27K AC Battery Pack- Portable Power Supply for -G Version Omnicharge Omni 20C+ or Omni 20+ 120v Battery for -G2 Version (Batteries Not Included with Antenna. Must Be Purchased Separately.) For more information, see our installation instructions at Parsec-t.com for Bernese Mountain Dog Case Series				

Additional Hardware Accessories

<i>Accessory</i>	<i>Part Number</i>
RJ-45 Adapter	PTA0415
RJ-45 Adapter, 1.25" Diameter	PTA0415-2
USB-A Panel Mount	PTA0448
HDMI Port	PTA0683
DC Barrel	PTA0447B
IEC to NEMA 5-15R adapter Kit	PTA0770
Screws	PTA0351
Panel Mount DC5521 Jack to DC5521 Plug, 2 FT	PTA0792
40mm Fan Replacement Kit (Includes screws and nuts)	PTA0764
40mm Vent and Cap Kit	PTA0477
SMA Wrench, Key Chain	PTA0194
Service: Router Installation	PTA-INSTALL-185



Parsec Antennas

972-804-4600

support@parsec-t.com