



## Compact Fin Style WiFi Antenna

- Compact Stylish Shape
- Dual band 2.4 / 5GHz WiFi
- Rugged housing for long service life

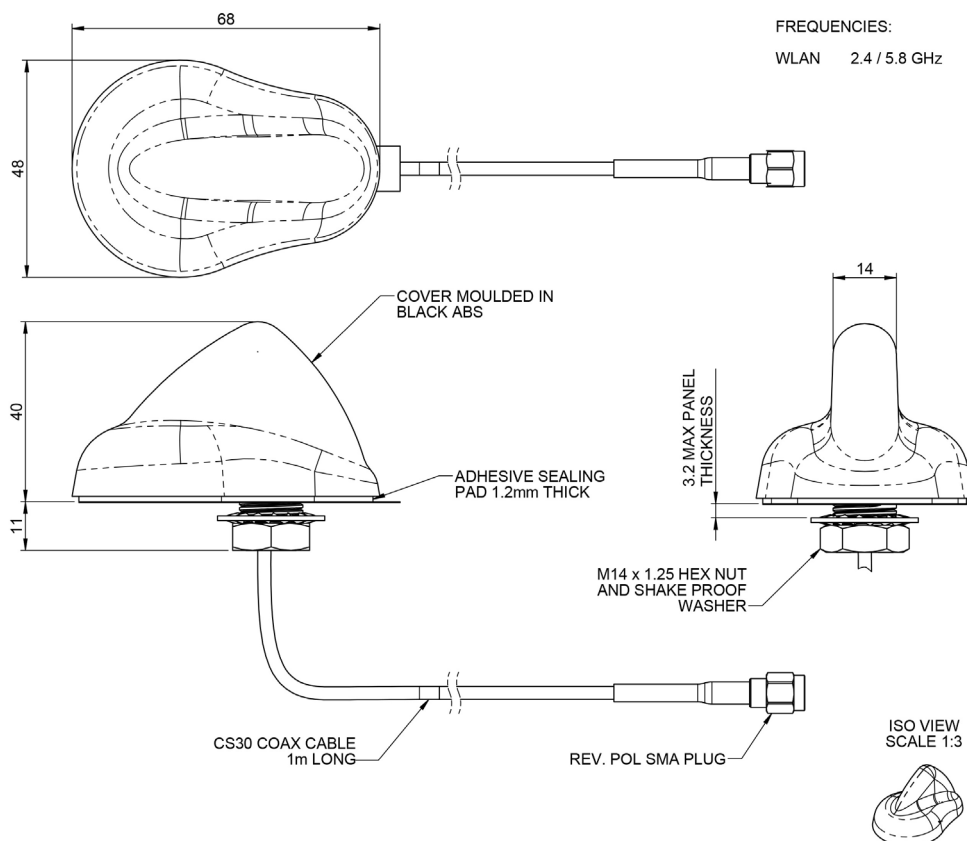
The FIN-24-58 is a compact 'fin' style antenna for 2.4GHz / 5GHz WiFi application.

The antenna is supplied, with CS30 low loss coax cable, with a choice of length/connector configurations.

The antenna only requires a single hole for mounting on the roof of a vehicle or equipment enclosure. This rugged fin style antenna is an ideal choice for Public Safety and fleet vehicles or on site/remote equipment enclosures.

### Technical Drawing

FIN-24-58-1SMARV Shown



# Compact Dual Band WiFi Antenna FIN-24-58

PANORAMA ANTENNAS

## Product Data

FIN-24-58-03SJ

FIN-24-58-1SMARV

### Electrical Data

Frequency Range (MHz)	2.4/5GHz
Gain: Isotropic	2dBi
Polarisation	Vertical
Pattern	Omni-directional
Impedance	50Ω
Max Input Power (W)	25

### Mechanical Data

Dimensions (mm)	Height	40 (1.5")
	Width	48 (1.8")
	Length	68 (2.7")
Operating Temp (°C)	-40° / +80°C (-40° / +176°F)	
Material	UV Stable ABS	

### Mounting Data

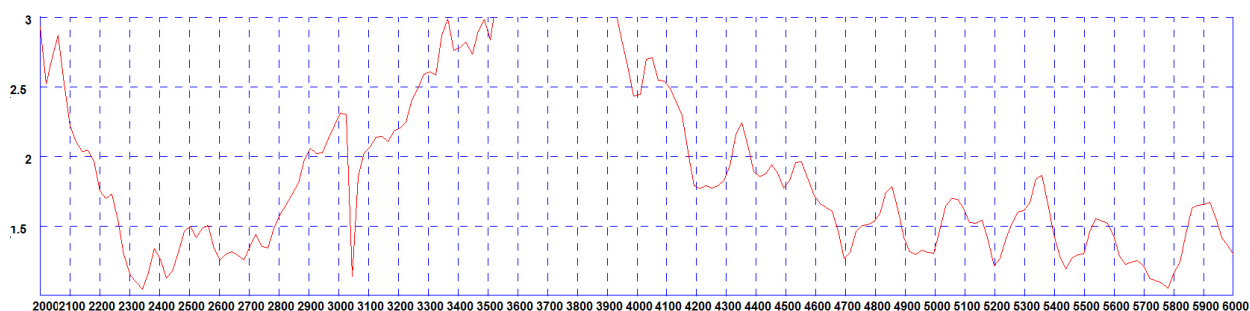
Fixing	(14mm / 0.5") Panel mount
--------	---------------------------

### Cable Data

Comms Cable	Type	CS30	CS30
	Diameter (mm)	2.8 (0.11")	2.8 (0.11")
	Length (m)	0.3 (1')	1 (3.3')
	Termination	SMA Jack	Reverse Polarity SMA Plug

### Electrical Data - Cell

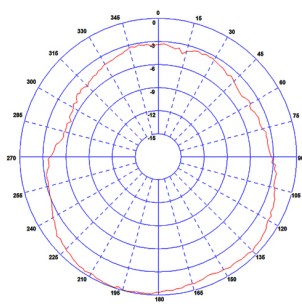
Typical VSWR\*



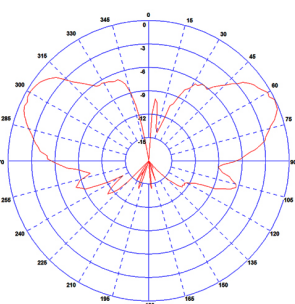
\*VSWR measured on a 600x600mm (2'x2') ground plane with 1m of (3') SR30 cable

### Pattern - GNSS

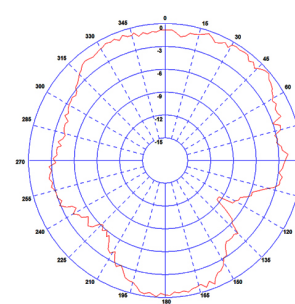
Typical H-Plane (2450MHz)



Typical E-Plane(2450MHz)



Typical H-Plane (5600MHz)



Typical E-Plane (5600MHz)

