

Y42400WB

PRODUCT OVERVIEW

High Performance:
This 10 element yagi antenna provides excellent wideband performance.

Rugged and weatherproof:
Our hybrid radome construction provides excellent weather protection for our driven element. The radome is constructed of UV inhibited ABS. The heavy duty mounting plate is extruded aluminum. Stainless steel V bolts are provided for long term reliability and resistance to corrosion. The elements are welded to the boom to provide excellent stability and intermod resistant operation.

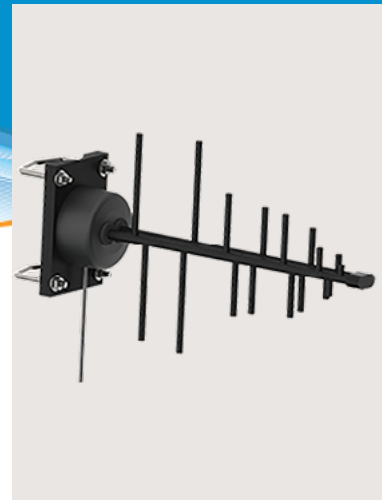
Lightweight and Durable:
This yagi antenna is easily installed by one person, yet is designed to withstand 125 MPH winds.

Termination Options:
Type A: 12" Teflon pigtail with N -female (Jack) connector.

Visit our eStore to customize an Antenna Online.

Electrical Specifications	
Frequency	400-800 MHz
Gain	9 dBi
VSWR	<1.5:2
Front to Back Ratio	20 dB
Impedance	50 Ohm Nominal
Beamwidth	40 degree Vertical, 40 degree Horizontal
Power Rating	150 Watts

Mechanical Specifications	
Radome Material & Color	Aluminum Booms, 3/16" solid welded elements Available in Black
Connector	12" Pigtail with 'N' Connector
Radome	3" UV Inhibited ABS
Radome Length	14.38" (36.5cm)
Weight	2 lbs
Mounting	2 1/2" Mast (Max)
Wind Rating	125 mph
Wind Load	8.1 lbs



HIGHLIGHTS:

- Wideband Log Periodic
- Covers 400-800 MHz
- Made-in-the-USA

RELATED MODELS:

- Y42700WB
(Full coverage on Sub-6 5G)
- Y33810 Series
(10 Elements, Limited Freq. Range)
- Y42700WB-2X
(Full Coverage on Sub-6, Inc. Bracket)

COMMON MARKETS:

- Rugged Mobile Wireless Networking
- Fixed Site Installation or Mobile
- Land Mobile Radio Solution



US Headquarters +1.847.671.6690
US/CA Toll Free +1.800.648.2800
European Facility +44.1543.459555

www.MobileMark.com