

COMTELCO

Technical Specification

Y3343

406-512 MHz 7dBd Gain

HEAVY DUTY YAGI ANTENNA

High Performance: These antennas provide 6dBd, wide band performance.

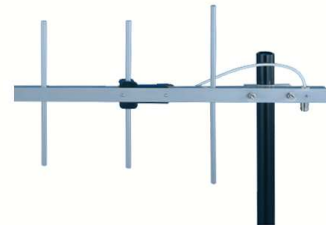
Rugged and weatherproof: The construction of our heavy duty yagis feature 1" aluminum U channel with 3/8" solid elements. All exposed areas are coated with UV polyester. The balun assembly is filled and sealed with elastomeric thermoplastic.

Lightweight and Durable: These antennas are easily installed by one person.

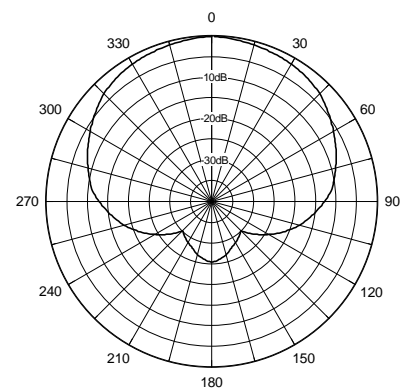
Termination Options:

Type A: 12" Teflon pigtail with N connector.

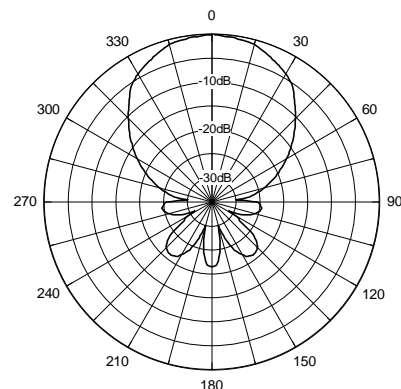
Type D: Direct N connection to the balun.



Horizontal Pattern



Vertical Pattern



ELECTRICAL SPECIFICATIONS:

GAIN: 7.0dBd F/B 15dB

FREQUENCY:

- A 406-430MHz <2:1 VSWR
- B 430-450MHz <2:1 VSWR
- C 450-470MHz <2:1 VSWR
- D 470-490MHz <2:1 VSWR
- E 490-512MHz <2:1 VSWR

VERT BEAMWIDTH: 60°

HORIZ BEAM WIDTH: 90°

RATING : 300 watts, 50 ohms impedance

MECHANICAL SPECIFICATIONS:

MATERIAL: 1" aluminum U channel boom
3/8" solid elements

FINISH: UV inhibited polyester coat

LENGTH: 20"

ELEMENT LENGTH: 14" longest

WEIGHT: <4 lbs.

MOUNT: 2 3/8" mast, stainless hardware

FLAT PLATE AREA: .19 ft²

WIND RATING: 125 MPH

WIND LOAD: 11.6 lbs.