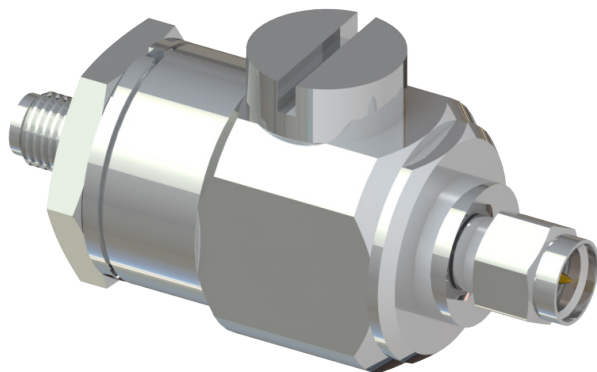


Coaxial Surge Arrester

SA-SP-SJ

PANORAMA ANTENNAS

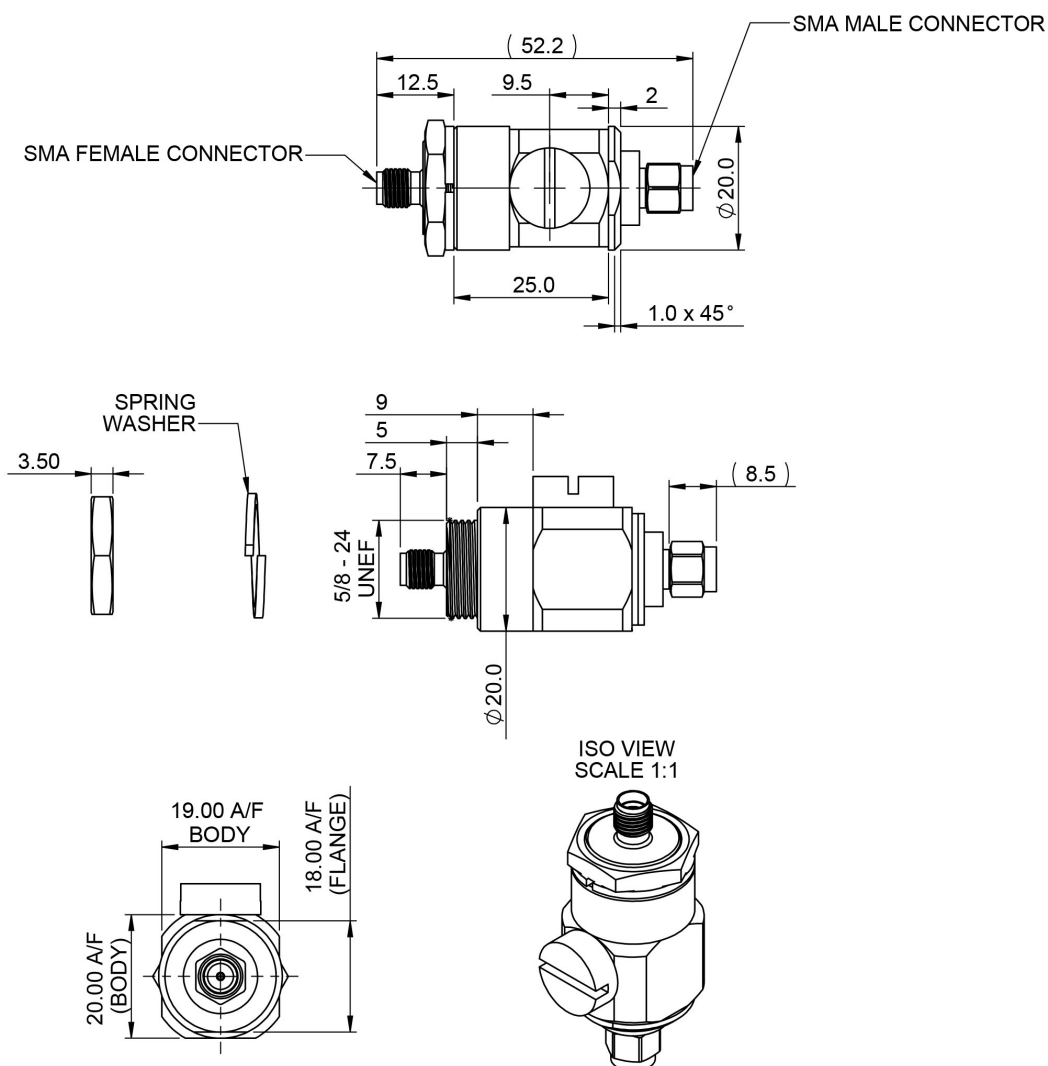


- Coaxial surge arrester
- Up to 5.8GHz operation
- SMA (m) to SMA(f)
- Bulkhead type panel mounting

The SA-SP-SJ is a single strike gas discharge surge arrester which offers a light duty surge protection solution. It is fitted with SMA connectors allowing it to be mounted in line between the antenna and cables or coaxial cable and radio/router device.

The surge arrester can operate up to 5.8GHz with low return and insertion loss. It has a bulkhead fitting which can be used to mount and ground the device to conductive panels of up to a max 4mm (0.16") thickness - alternatively a heavy duty grounding tag can be fitted.

Technical Drawing



Coaxial Surge Arrester

SA-SP-SJ

PANORAMA  ANTENNAS

Product Data

Part No.

SA-SP-SJ

Electrical Data

Frequency range (Mhz)	up to 5.8GHz
Impedance	50 ohm
Typical VSWR	<1.5:1

Mechanical Data

Dimensions (mm)	Length (including connectors)	52.2 (2.06")
	Height (Maximum)	24 (0.95")
Operating temp (°C)	-40° I +80°C (-40° I 176° F)	
Mounting hole diameter (mm)	16 (0.63")	
Max panel thickness (mm)	4 (0.16")	
Material	Brass/ Bright Nickel plated	

Terminations

Connector 1	SMA Plug (m)
Connector 2	SMA Jack (f)