



Accessories

PRODUCT CATALOGUE

Over 75 Years of Experience

Panorama Antennas is a privately owned family business, now in its third generation, and leading designer and manufacturer of antennas for wireless communication. Established in London in 1947, Panorama started life as a manufacturer of consumer products and buoyed by huge demand in 1952, began manufacturing TV components and antennas. With the transistor radio trend of the 1960s, Panorama's expert knowledge swiftly led the company into the manufacturing of communication antennas.





Throughout the 1970s and 80s, Panorama evolved to become the first specialised communication antenna manufacturer in the UK, developing a range of cellular antennas to coincide with the launch of the mobile phone network in Britain. 1990 was a year of huge change as Panorama found itself revolutionising cellular glass mount antenna technology, filing a patent application for the first ever solid state coupling circuit. Through creating a new benchmark for quality in the production of components and leading technology development, Panorama has grown side by side with the cellular telecommunications industry.

Today Panorama produces antennas for the world's leading communication companies and has grown to include over 100 staff in 5 international sales offices, as well as operating 4 fully owned subsidiaries. Manufacturing, design and development remain located in London less than a mile from the original factory. Our network of international sales representatives means that all customers get the attention and advice they require, providing local support on a global scale.

Antennas for Next Generation

Panorama's constant cutting-edge research ensures that our antennas meet the demands of the very latest technology. With over 75 years experience in delivering world-class antenna products, Panorama's current product range reflects our unparalleled expertise in providing high-quality performance antennas.

Content

| | | |
|---|---|-------|
|  | Mounting Accessories | 5-13 |
|  | Extender and Reinstall Kits | 15 |
|  | Coaxial Adapters & Surge Arresters | 17-19 |
|  | Cable Assemblies & Adapter Cables | 21 |

Mounting Accessories





SAB-224

Magnetic Mount

- Easy Installation
- For Sharkee® & MiMo Sharkee® Series
- For temporary magnetic mounting
- Ideal for antenna trials and drive-testing

For use with the GPSD/SHK[G]/FINB Sharkee® antennas, the SAB-224 provides a magnetic mount solution for antenna evaluation and drive-testing. Featuring a powder coated stainless steel plate, fitted with two magnets, this is a simple solution that allows the antenna to be installed on a vehicle without drilling any holes.

NOTE – this solution does not provide a suitable ground-plane if using a VHF or UHF whip as part of the antenna configuration.

For use with

GPSD/SHKG-7-27 Ranges | GPSB5G | FINB



SAB-254

Magnetic Mount

- Easy Installation
- For MiMo Sharkee® 5G Series
- For temporary magnetic mounting
- Ideal for antenna trials and drive-testing

For use with the GPSD/SHK[G]-6-60 5G Sharkee® antennas, the SAB-254 provides a magnetic mount solution for antenna evaluation and drive-testing. Featuring a powder coated stainless steel plate, fitted with two magnets, this is a simple solution that allows the antenna to be installed on a vehicle without drilling any holes.

NOTE – this solution does not provide a suitable ground-plane if using a VHF or UHF whip as part of the antenna configuration.

For use with

GPSD/SHKG-6-60 Ranges



SAB-225

Magnetic Mount

- Rugged magnetic mount adapter plate
- For temporary mounting
- Suitable for Ford Explorer
- Ideal for antenna trials and drive testing

For use with the LPMM/LGMM range of low profile MiMo antennas, the SAB-225 provides a magnetic mount solution for antenna trials and drive-testing. Using three heavy duty magnets fitted to a stainless steel metal plate, this is a very easy, simple and quick solution that can be fitted anywhere on the vehicle to evaluate the antennas performance without drilling any holes.

For use with

Great White® 5G Antennas

Mako® / Mako® 5G Antennas



SAB-333

Magnetic Mount

- Rugged Magnetic Mount Adapter
- For Temporary Mounting
- Suitable for Ford Explorer/Interceptor

The SAB-333 provides a magnetic mount solution for antenna trials and drive testing. Using four heavy duty magnets fitted to a stainless steel metal plate, this provides a simple and quick solution that allows the antenna to be fitted on the vehicle roof in order to evaluate the antenna's performance without drilling any holes.

The magnets are spaced to allow fitment to the roof ribs on a Ford Explorer/Interceptor.

For use with

GPSP4/SHKG4/FIND4-6-60



SAB-326

Roof Mount Gasket

- Dome Antenna mounting adaptor kit for Ford Explorer / Interceptor

For use with the Mako®, Mako® 5G and Great White® 5G antenna series, the SAB-326 provides a simple mounting solution for fitting this product line to the peak of the ribs on the roof of a Ford Explorer / Interceptor 2020.

When correctly fitted, the adaptor will seal the mounting hole and conform to the contours of the roof rib presenting a pleasant aesthetic finish.

For use with

Great White® & Mako® / Mako® 5G antennas

Ford Explorer / Interceptor 2020



SAB-324-2

Roof Mount Gasket

- Dual Sharkee® mounting adaptor kit for Ford Explorer / Interceptor

For use with the GPSD4/FIND4/SHK[G]4-6-60[-X] dual Sharkee® antenna series, the SAB-324-2 provides a simple mounting solution for fitting this product line to the peak of the ribs on the roof of a Ford Explorer / Interceptor 2020.

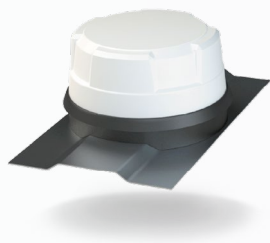
Comprising a silicone rubber mounting boot and extended adhesive conductive pads to maintain effective coupling to the ground plane, the kit is easy to fit to the antenna and to install on the vehicle.

When correctly fitted, the adaptor will seal the mounting hole and conform to the contours of the roof rib presenting a pleasant aesthetic finish.

For use with

GPSD4/SHKG4/FIND4-6-60

Ford Explorer / Interceptor 2020



LGMM-EXT-R-SLT

Ribbed / Curved Roof Adapter Kit

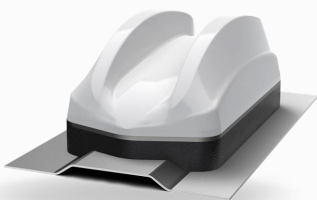
- Mounting Kit for ribbed or curved/uneven mounting panel Allows fitment to SUV's and Panel Vans

For use with the LGMM/LPMM low profile MiMo antenna series, the LGMM-EXT-R-SLT provides a simple mounting solution for ribbed roof panels commonly found on SUV's and LCV's, which is also suitable for curved/uneven roof mounting situations. The kit comprises of a semi closed cell outer EPDM foam pad, with a closed cell silicone inner foam pad, and a slotted mounting bush extender with nut/ washer for easy cable management.

For use with

Great White® / Great White® 5G Antennas

Mako® / Mako® 5G Antennas



SAB-312

Ribbed Panel Adapter

- Mounting kit for ribbed or curved/uneven mounting panels
- Allows fitment to SUV's and Panel Vans

For use with the GPSD4/SHKG4 Dual Sharkee® antenna series, SAB-312 provides a neat mounting solution for ribbed roof panels commonly found on SUV's and LCV's, but it is equally suitable for use on curved/uneven roof panels. The kit comprises of a semi closed cell outer EPDM foam pad, with a closed cell silicone inner foam pad, and a slotted mounting bush extender with nut/ washer for easy cable management.

For use with

GPSD4/SHK(G)4 Dual Sharkee®



SAB-196

NMO to M6 Thread Adapter

- Allows standard Panorama whips with M6 thread fitting to be used on NMO bases. Supplied with a rubber 'o' ring and sealing gasket for a secure fit.

The SAB-196 NMO adaptor enables Panorama whips with M6 thread fitting to be used on a standard NMO panel mount base. Moulded in durable Nylon and with a TPU washer and 'o' ring for sealing to the mounting surface, the SAB-196 adaptor offers a secure and reliable installation every time.

For use with

M6F Thread Antennas



SAB-181

NMO to Modular Stud Adapter

- Allows standard Panorama whips to be used on NMO bases. Supplied with a rubber 'o' ring and sealing gasket for a secure fit.

SAB-181 NMO adaptor offers compatibility between Panorama modular antennas and standard NMO panel mount bases.

Moulded in durable Nylon and with a TPU washer and 'o' ring for sealing to the mounting surface, the SAB-181 adaptor offers a secure and reliable installation every time.

For use with

Modular Stud Antennas



SAB-138

Pole Mount Bracket Kit

- Allows marine antenna to be fitted to pole
- Fixed site solution that can be wall or mast mounted

For use with

For use with NA series marine (Includes 2x clamp assemblies)



SAB-315

Marine Mount Adaptor

- Converts BS[G]M series antenna to fit standard 1"-14TPI marine mount.
- Manufactured using marine grade materials.

For use with

BS(G)M series antenna



NDRS-SL

Marine Ratchet Mount

- Heavy-duty ratchet angle antenna mount.
- Slotted 1"-14TPI thread for simple antenna fitting.
- Manufactured using marine grade materials.

Intended for use with the Panorama marine antenna series, the NDRS-SL is a rugged, adjustable angle ratchet antenna mount. Using marine grade stainless steel components, it is designed to survive harsh marine environments.

The base plate has four holes for fixing and the antenna mounting interface features a slotted marine standard 1"-14TPI thread for simple antenna attachment and routing of the coaxial cable.

For use with

NA series antenna and BS(G)M with SAB-315



SAB-323

(Available in North America Only)

Offset Wall Mount Bracket

- 38 mm (1.5") heavy duty galvanized steel pole with wall plate, grey powder coat finish
- 90 degree tilt adjustment
- Supports 68kgs (150Lbs.) load in both axis
- Choice of offset distance by pole reversal

SAB-323 is a wall mounted tube bracket that provides an offset mast to mount antennas to a wall or panel using mast mounting hardware. The kit consists of a heavy duty galvanised, powder coated 38mm (1.5") steel tube and a wall mounting flange bracket with stainless steel fasteners. The use of this mounting bracket allows easy directional adjustment of the antenna and the offset from the wall/ panel provides clearance where there is a roof overhang or eaves present.

The mounting tube can be fitted to the bracket either way up to provide the option of two different offset distances 229mm (9") or 356mm (14").

For use with

Omni-directional Antennas

Directional Antennas



SP5-0097-C

Wall/Pole Mount Bracket

- Adaptable installation
- Fixed site solution that can be wall or mast mounted

For use with

LPE | LGE



SP5-0577

Wall/Pole Mount Bracket

- Provides a versatile solution for wall mount applications
- Heavy Duty and weather resistant

For use with

LPAM / LGAM Series



SP5-0470

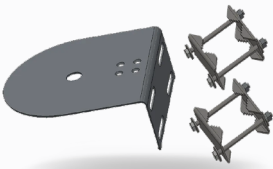
Wall/Mast Mount

- Adaptable installation
- Fixed site solution that can be wall or mast mounted

A durable metal bracket accessory available for the LPB type antenna and as supplied with B4BE series. Provides a versatile mounting solution for wall or mast mounting.

For use with

LPB / B4BE Series



SAB-309

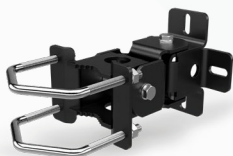
Wall/Pole Mount Bracket

- Adaptable installation
- Fixed site solution that can be wall or mast mounted

Robust Stainless Steel Bracket for use with the Great White® 5G, Mako® and Mako® 5G range of low profile MiMo antennas, the SAB-309 provides a wall / pole mount option.

For use with

Mako®/ Mako® 5G range and Great White® 5G



SAB-186

Wall/Pole Mount Bracket

- Multi-tilt/swivel mounting bracket for Panorama fixed site antennas.

Designed for use with the Panorama B6SE antenna series, the Panorama SAB-236 kit is a robust, pole mount bracket designed to survive in harsh environments.

For use with

WM8 series and WMM4G/WMM2G Series



SAB-236

Pole Mount Bracket

- B6SE series mast mounting bracket conversion kit

Designed for use with Panorama WM8 series and WMM4G/WMM2G-6-60 antenna ranges, the SAB-186 kit is a rugged wall/mast mount bracket which enables both horizontal and vertical angle adjustment.

For use with

B6SE Series

The background is a deep blue field filled with intricate, glowing circuit board patterns. Overlaid on this are several white line-art icons: a microchip at the top left, a gear at the top right, a cloud in the upper middle, a smartphone at the bottom left, and a globe at the bottom right. A large, semi-transparent circular graphic with a gear-like outer ring and a central icon of crossed wrench and screwdriver is positioned behind the text box.

Extender / Reinstall kits



M18-EXT-SLT

Thick Panel Extender kit

- Allows installation of antennas with M18 bush fitting to thick mounting panels. The kit includes a 38mm length, slotted & threaded extender tube and replacement slotted washers and split nut for easy cable management.

For use with

Panel mount antennas with M18 bush fitting



KRV Reinstall Kits

Reinstall Kits

Essential when the antenna is to be de-installed and then re-installed on a different vehicle. Using the specific re-installation kit for your low profile antenna will ensure that the antenna effectively seals to the mounting panel. Each kit comprises of a replacement adhesive pad and other parts required specific to the type of antenna.

Tip: After removing the antenna, always ensure that any remnants of the old adhesive pad are removed and the base plate is clean before fitting the new pad. Always refer to the original installation instructions for the antenna – if not to hand, these can be downloaded from Panorama's website if required.

Part no.

For use with

KRV400

Great White® 5G series Mako®
& Mako® 5G series

KRV401

MiMo Sharkee®
(GPSD / SHKG) series

GP-INI922

Sharkee® (GPSB5G / FINB) series

*Please note the antenna is used for demonstrative purposes only and is not supplied with the reinstall kit.

A person in a dark blue suit is holding a tablet computer. The background is a blurred city street with buildings and traffic lights. Overlaid on the image are various digital and technical graphics, including a gear icon, a shield icon, a bar chart, and various lines and dots representing data or network connections. The overall color scheme is blue and white, with a futuristic or technological feel.

Coaxial Adapters & Surge Arresters



CA-BP-FP

Coaxial Adapter

- Nickel Plated Brass
- Operating Temp (°C): -40° / +80°C (-40° / 176°F)

Connector - Connector

BNC Plug (m) to FME Plug (m)



CA-SP-FP

Coaxial Adapter

- Nickel or Gold Plated Brass
- Operating Temp (°C): -40° / +80°C (-40° / 176°F)

Connector - Connector

SMA Plug (m) to FME Plug (m)



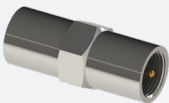
CA-MP-FP

Coaxial Adapter

- Nickel Plated Brass
- Operating Temp (°C): -40° / +80°C (-40° / 176°F)

Connector - Connector

Mini-UHF Plug (m) to FME Plug (m)



CA-FP-FP

Coaxial Adapter

- Nickel Plated Brass
- Operating Temp (°C): -40° / +80°C (-40° / 176°F)

Connector - Connector

FME Plug (m) to FME Plug (m)



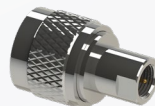
CA-TP-FP

Coaxial Adaptor

- Nickel Plated Brass
- Operating Temp (°C): -40° / +80°C (-40° / 176°F)

Connector - Connector

TNC Plug (m) to FME Plug (m)



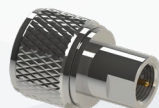
CA-NP-FP

Coaxial Adaptor

- Nickel Plated Brass
- Operating Temp (°C): -40° / +80°C (-40° / 176°F)

Connector - Connector

N Plug (m) to FME Plug (m)



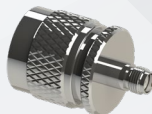
CA-PLP-FP

Coaxial Adaptor

- Nickel Plated Brass
- Operating Temp (°C): -40° / +80°C (-40° / 176°F)

Connector - Connector

PL259 Plug (m) to FME Plug (m)



CA-NP-SAJ

Coaxial Adaptor

- Nickel Plated Brass
- Operating Temp (°C): -40° / +80°C (-40° / 176°F)

Connector - Connector

N Plug (m) to SMA Jack adapter (f)



SAMS-SP-SMABJ

Multi-strike Surge Arrestor

- Coaxial multi-strike surge arrester
- 0-6GHz operation
- SMA (m) to SMA(f)
- Bulkhead panel mounting

Cable & Connector

SMA plug (m) to SMA bulkhead jack (f)



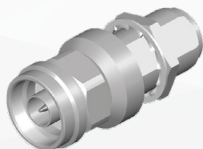
SAMS-NP-NBJ

Multi-strike Surge Arrestor

- Coaxial multi-strike surge arrester
- 0-6GHz operation
- N type (m) to N type (f)
- Bulkhead panel mounting

Cable & Connector

N plug (m) to N bulkhead jack (f)



SA-SP-SJ

Single-strike Surge Arrestor

- Coaxial surge arrester
- Up to 5.8GHz operation
- SMA (m) to SMA(f)
- Bulkhead type panel mounting

Cable & Connector

SMA Plug (m) to SMA bulkhead jack (f)

Cable Assemblies & Adapter Cables





C23

Cable Assemblies

- VHF / UHF
- RG58 C/U Low loss
- Stranded core



C29

Cable Assemblies

- Cellular 4G/3G/2G
- Double shielded - Stranded core
- Ultra low loss cable*

* C29FR Flame Retardant Zero Halogen version of C29 is available upon request



C400

Cable Assemblies

- Cellular 4G/5G/WiFi & VHF/UHF Fixed Site
- Double shielded - solid core
- Ultra-low loss 10.3 mm Ø cable
- Longer cable run



C32

Cable Assemblies

- Cellular 4G/5G & WiFi
- Double shielded - Solid core
- Flame retardant jacket
- Ultra low loss cable*



C240

Cable Assemblies

- Cellular 4G/5G & WiFi
- Double shielded solid core 6mm Ø cable
- Flame retardant jacket
- Longer cable run*



C74-SJ-010-TS9

Adapter Cable

- Adaptor cable for 4G/5G devices
- 10cm length SMA (f) to TS9 plug

PANORAMA ANTENNAS

Head Office - United Kingdom
sales@panorama-antennas.com
+44 (0)20 8877 4444

Australia
sales.apac@panorama-antennas.com
+61 (08) 9314 1381

France
fr.sales@panorama-antennas.com
+33 5 54 07 04 36

USA
sales.nam@panorama-antennas.com
+1 817-539-1888