

Low Profile Bracket Mount VHF Antenna

PANORAMA ANTENNAS

LPBV-[VAR]-NJ



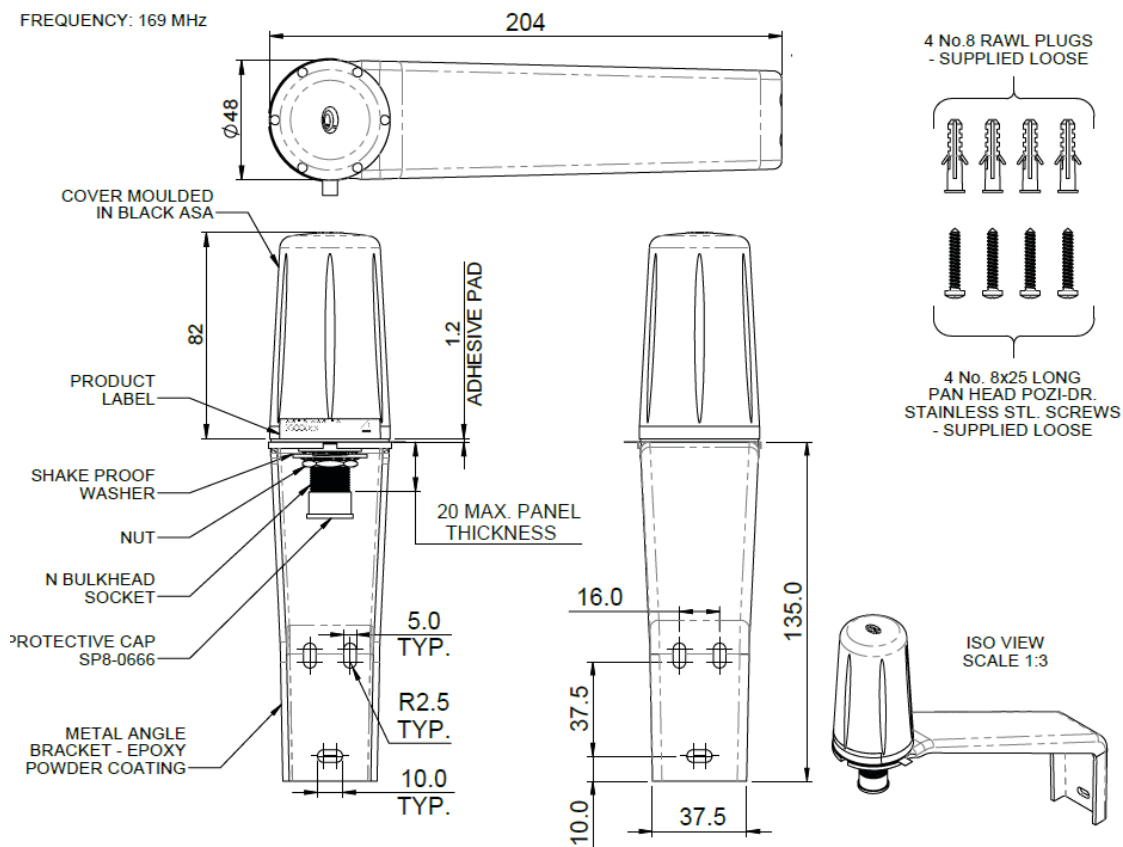
Rugged Low Profile Design
VHF Element
Bracket mounted

LPBV-[VAR]-NJ is a low profile fixed VHF antenna in a robust compact housing.

Designed to be tough yet cost effective, the antenna is completely enclosed in a moulded housing made from weather and impact resistant plastic.

The antenna is supplied with an offset bracket which allows for easy mounting and provides an electrical ground plane. The antenna features an N Jack type connector allowing use of a variety of cable types and lengths.

Technical Drawing



Low Profile Bracket Mount VHF Antenna

PANORAMA ANTENNAS

LPBV-[VAR]-NJ

Product Data

Part No.

LPBV-169-NJ

Electrical Data

Frequency Range (MHz)	169MHz
Peak Gain: Isotropic	0dBi
Typical VSWR	≤ 2.5:1
Polarisation	Vertical
Impedance	50Ω
Max Input Power (W)	60

Mechanical Data

Dimensions (mm)	Height	82 (3.22")
	Offset	180 (7.1")
Operating Temp	-30° / +80°C (-22° / 176°F)	
Material	A.S.A	
Colour	Black	
Ingress Protection	Equivalent to IP65	

Mounting Data

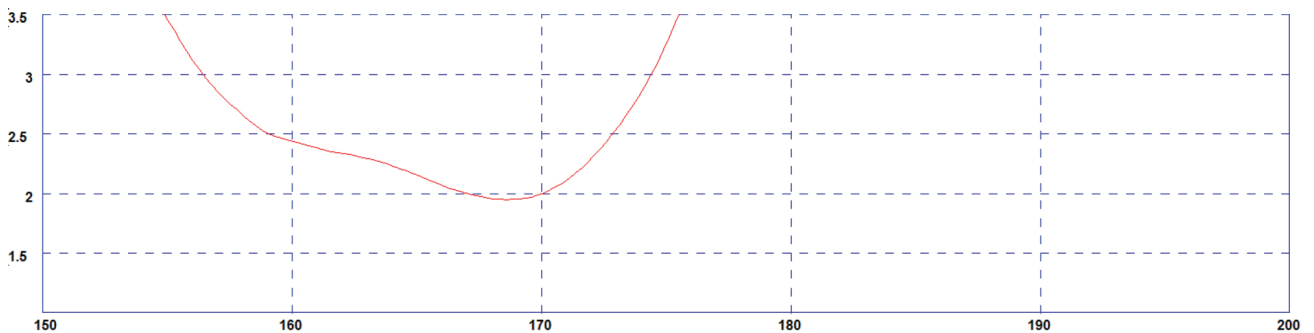
Mounting type	Bracket mount
---------------	---------------

Connector Data

Type	N Jack
------	--------

Electrical Data

Typical VSWR for 169MHz Version*



* measured on SP5-0572 with 1m (3'3") CS23 extension cable.

Typical H Plane- 169MHz

