



## Ultra Wideband MiMo Antenna

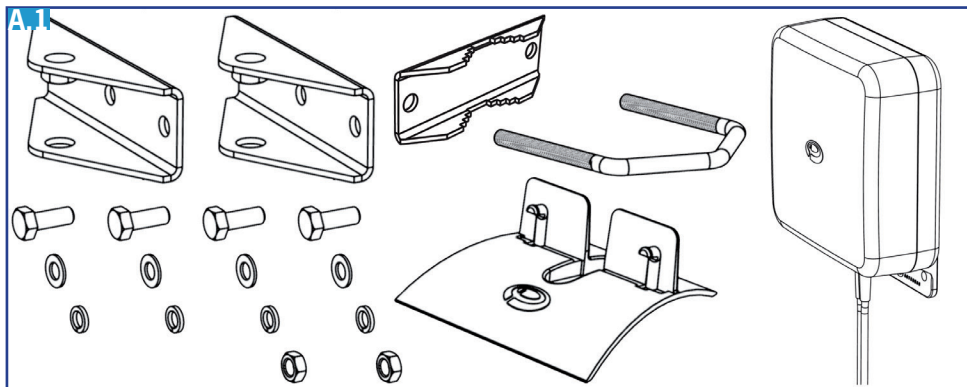
### Installation Guide & Safety Information



Maximise your Connectivity, Minimise your Antennas

## A.

## SELECTING A POSITION



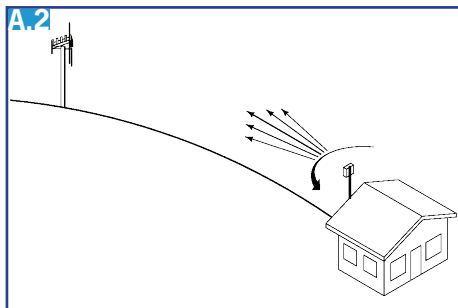
A.1 - Check that all the contents are in the box - This should include:

- |                         |                  |                    |
|-------------------------|------------------|--------------------|
| 1 x Antenna             | 1 x U-Bolt       | 4 x Plain Washers  |
| 1 x Desk Stand          | 1 x U-Bolt Plate | 4 x Spring Washers |
| 2 x Wall Bracket Plates | 4 x Screws       | 2 x Nuts           |

### A.2 - Select Position

For a good installation the antenna should be directed towards the strongest network signal. In order to achieve this follow the guide below.

1. Connect the antenna to your router or modem with the antenna adapter (if applicable) and coaxial cable provided.
2. Ensure that your device is connected to the network and displaying the signal strength indicator.
3. With the antenna at selected location, rotate it in approximately 45 degree steps – in each position, you may need to wait for up to one minute to allow the signal strength indicator to update.



*Note: Signal strength indication may be displayed either:*

- a. Graphically with bars, (where more bars is a better signal), or
- b. As a signal level value in dBm (e.g. -80) - in this case, the lower the negative number, the better the signal, (i.e. -71 is stronger signal than -83).

## A. SELECTING A POSITION

### A.3. Mounting the Antenna

Mounting the antenna internally

To mount the antenna internally use the supplied desk stand and follow the instructions at B. DESK MOUNTING INSTRUCTIONS

Mounting the antenna externally

Mounting the antenna outside will provide optimum signal strength and data rates. Begin by following the instructions at A.1 & A.2 concerning position and orientating the antenna. Then follow C. MAST MOUNTING INSTRUCTIONS or D. WALL MOUNTING INSTRUCTIONS depending upon the equipment you have available.



## IMPORTANT SAFETY INFORMATION



**RF Safety Note** – Ensure that the antenna is mounted in such a way that no person is likely to be within a distance of 30cms (12") from the antenna during use. Ensure that the antenna is used only as supplied the co-axial cables should not be cut shorter or otherwise modified.



**General Safety Note** - Make sure that the product is mounted so that it cannot fall and cause injury. Do not chew the product or put it in your mouth. Do not leave children unsupervised with the product or packaging.



**Electrical Caution** - Parts of this antenna are an electrical conductor. Contact with power lines can result in death or serious injury. The antenna and supporting mast must not be close to any power lines during installation, use or removal. If the antenna is elevated and at risk from lightning strike it must be ensured that the antenna is mounted and earthed appropriately by a trained professional in accordance with the relevant standards.



Waste electrical products should not be disposed of with household waste. All electronic products with the WEEE logo must be collected and sent to approved operators for safe disposal or recycling. Please recycle where facilities exist. Many electrical/electronic equipment retailers facilitate "Distributor Take-Back scheme" for household WEEE. Check with your Local Authority or electronic retailers for designated collection facilities where WEEE can be disposed of for free.

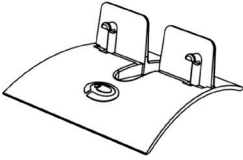


**RoHS 2** compliance is declared per Directive 2011/65/EU and its subsequent amendments with exemption 6.c applied. This product contains lead as an alloying element in a copper alloy containing up to 4% lead by weight.

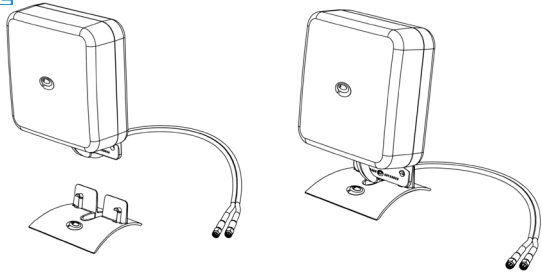
**REACH** (Registration, Evaluation, Authorisation and Restriction of Chemicals, EC 1907/2006)  
This product contains Lead (CAS No. 7439-92-1) which is classified as an SVHC (Substance of Very High Concern) as being toxic to reproduction under Article 57c. of REACH. **Do not chew parts or put them in mouth, keep away from unsupervised children. Dispose of parts as WEEE waste do not send to landfill.**

## B. DESK MOUNTING INSTRUCTIONS

B.1



B.2



1 - To Desk Mount this antenna you will need:

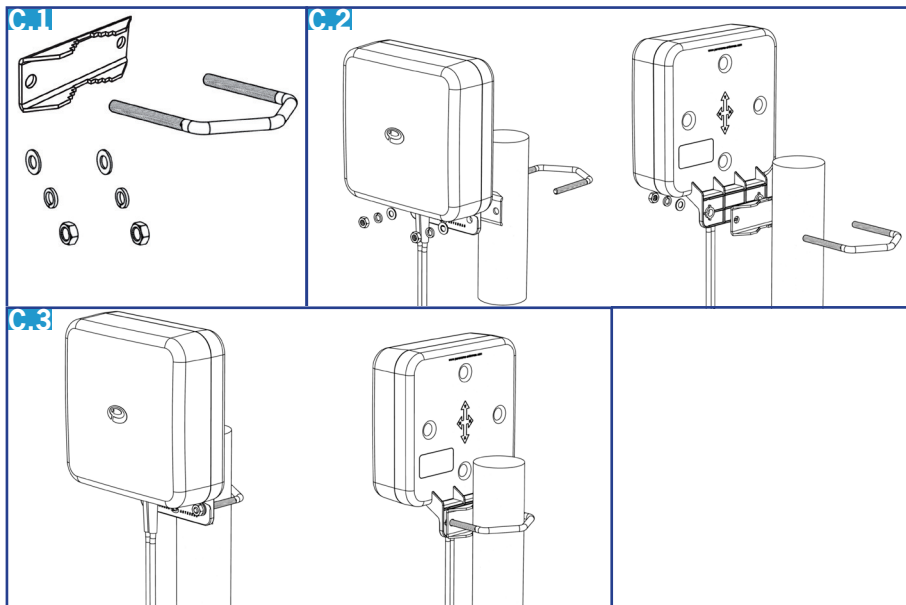
1 x Antenna

1 x Desk Stand

2 - Desk Mounting the antenna - Internal use only

Gently press the base of the antenna onto the desk stand ensuring that a 'Click' sound is made when the pegs are engaged. Store any excess cable safely out of the way. Do not tightly wrap or bunch the cable.

## C. MAST MOUNTING INSTRUCTIONS



### 1 - To Mast Mount this antenna you will need:

1 x Antenna	1 x U-Bolt	1 x U-Bolt Plate
2 x Washers	2 x Spring Washers	2 x Nuts

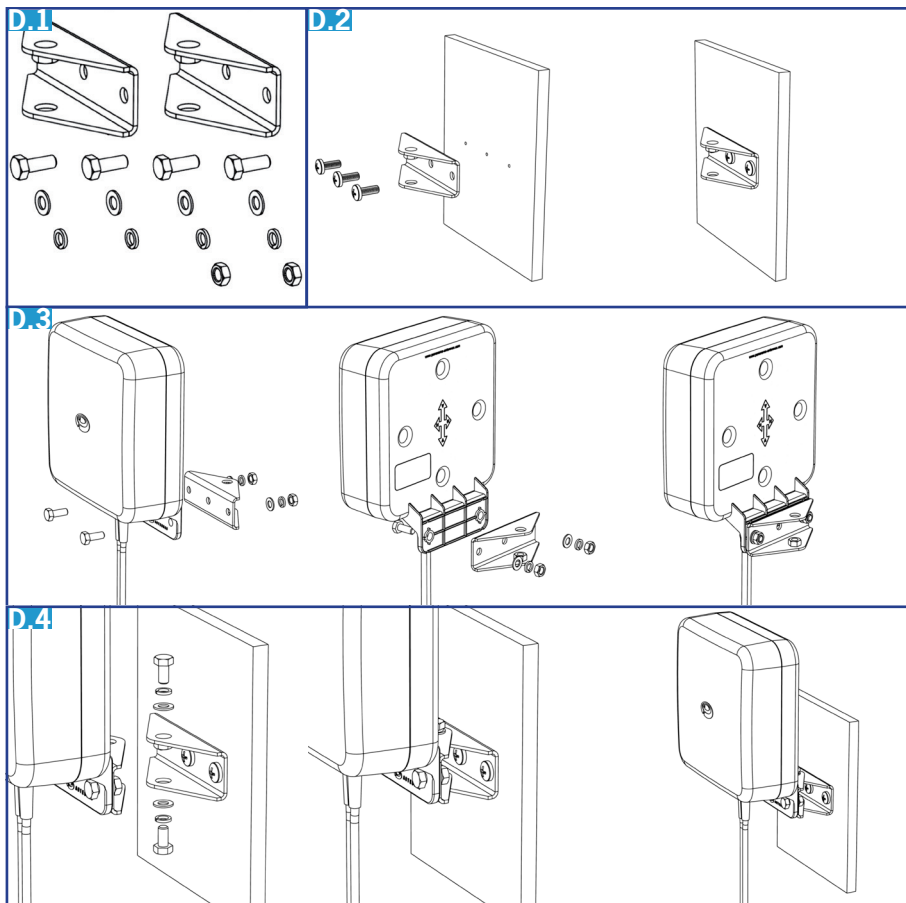
### 2 - Mast Mounting the antenna externally

Ensure that the selected mounting location can be safely accessed with the equipment that you have available and mount the antenna so that it has at least 1 metre (3.3') of clearance from all obstructions if possible. The antenna should not be mounted directly on to metal masts or poles. If the antenna must be mounted to such a surface it must be mounted at the lip of the roof or the very top of the pole such that the body of the antenna is elevated clear of the metal surface.

### 3 - Ensure a safe connection

Secure the antenna in place and waterproof the exposed connections. Fully tighten the mounting hardware. If exposed the RF connector joint should be waterproofed with a weatherproof electrical tape (self amalgamating type is recommended) allowing a significant overlap of each turn and ensuring that the overlap is in the opposite direction to predicted water fall.

## C. WALL MOUNTING INSTRUCTIONS



## C. WALL MOUNTING INSTRUCTIONS

1 - *To Wall Mount this antenna you will need:*

1 x Antenna	2 x Wall Bracket Plates	4 x Screws
4 x Washers	4 x Spring Washers	2 x Nuts

2 - Fix the mounting bracket to the external wall or other flat surface using suitable screws and wall plugs (not supplied).

3 - Fix the mounting bracket to the antenna using the the washers and screws supplied.

4 - Fix the antenna to the wall mounting bracket

5 - Secure the antenna in place and waterproof the exposed connections. Fully tighten the mounting hardware. If exposed the RF connector joint should be waterproofed with a weatherproof electrical tape (self amalgamating type is recommended) allowing a significant overlap of each turn and ensuring that the overlap is in the opposite direction to predicted water fall.

*Waiver:*

This document represents information compiled to the best of our present knowledge. It is not intended as a representation or warranty of fitness of the products described for any particular purpose. This document details guidelines for general information purposes only. Always seek specialist advice when planning installations and ensure that antennas are always installed by a properly qualified installer in compliance with local laws and regulations.

**PANORAMA  ANTENNAS**

[www.panorama-antennas.com](http://www.panorama-antennas.com)