

2x2 MiMo 4G/5G Dome Antenna Kit

LG-IN2446

PANORAMA ANTENNAS

Low Profile 4x4 4G/5G MiMo

4 x 4 MiMo Dual Band WiFi

GPS/GNSS Active Antenna 26dB LNA



The LG-IN2446 range has been designed to provide 4x4 4G/5G MiMo performance from 617-960/1710-6000MHz combined with GPS/GNSS and 4x4 MiMo WiFi 2.4/5.0GHz in a compact low profile housing.

The antenna is designed to be panel mounted and can be fitted on a conductive or non-conductive panel. Supplied with integrated flame retardant RG174 cables (Compliant to UNECE 118.01 and EN45545-2) and a halogen free flame retardant radome the antenna is suitable for many environments and applications. The antenna radome is available in black or white and meets IK10 for vandal resistance and IP69K for ingress protection.

The integrated GPS/GNSS module supports GPS, Glonass, Galileo, QZSS and Compass with 26dB LNA gain. This GPS module features advanced filtering for LTE B13/14 designed to minimise potential in band interference.

LG-IN2446 is supplied as a complete plug and play kit with integrated 5m (16') ultra-low loss TPE extension cables and SMA (m) connectors for 4G/5G and GPS and Rev Pol SMA for WiFi.

IK10

Certified IK10
Impact Resistant

IP69K
RATED

Certified IP69K
Ingress Protected



Flame Retardant
Halogen Free
Radome -UL94-V0

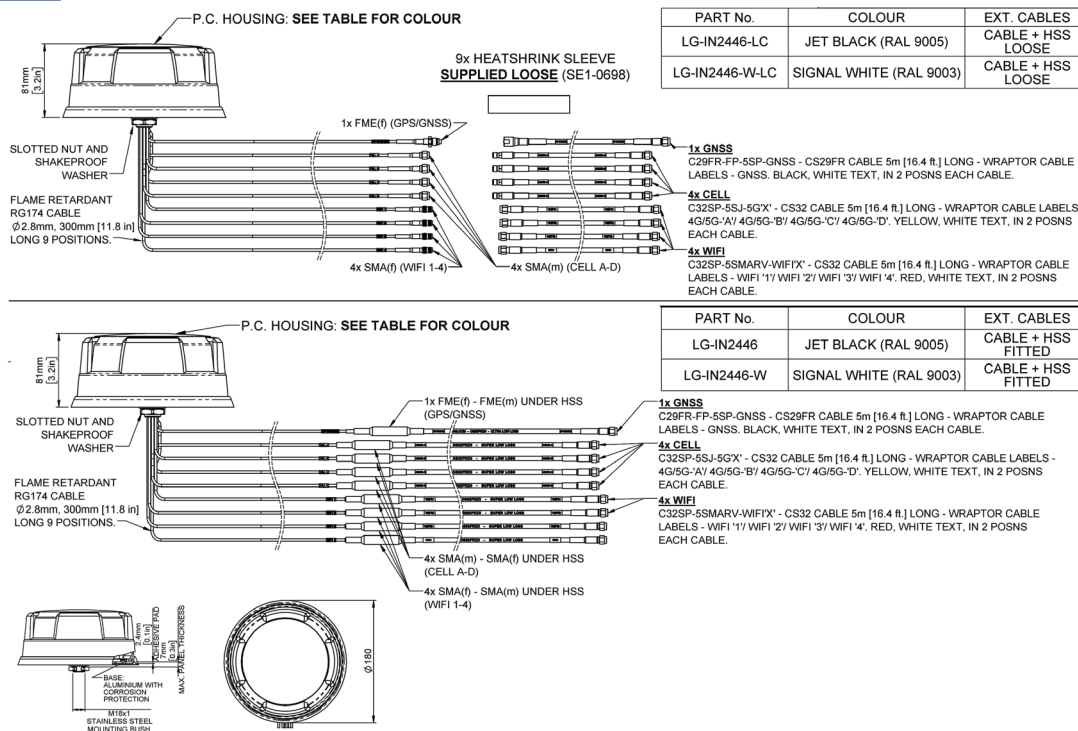


UV, Ozone, High &
Low Temperature
Protected



Environmentally
Compliant - Meets
RoHS, REACH - PVC
Free

Technical Drawing



2x2 MiMo 4G/5G Dome Antenna Kit

LG-IN2446

PANORAMA  ANTENNAS

Part No.					
		LG-IN2446-W	LG-IN2446-W-LC	LG-IN2446	LG-IN2446-LC
Electrical Data					
Frequency Range (MHz)	4G/5G Elements	4x 617-960 / 1710-6000			
	WiFi Elements	4x 2.4/4.9-6GHz			
Peak Gain: Isotropic : (dBi)	4G/5G Elements	617-960MHz	4		
		1710-3800MHz	8		
		4900-6000MHz	9		
	WiFi Elements	2.4 GHz	9		
		4.9-6.0GHz	9		
	Typical Efficiency **	4G/5G Elements	617-960MHz	>50%	
1710-3800MHz			>75%		
4900-6000MHz			>85%		
WiFi Elements		>70%			
Isolation ***	4G/5G Elements	>10dB			
	Wifi Elements	>12dB			
Correlation Co-efficient	4G/5G Elements	< 0.2			
	WiFi Elements	<0.1			
Nominal Impedance			50Ω		
GPS/GNSS Data					
Frequency Range (MHz)			1562-1612		
VSWR			<2.0:1 ± 4MHz		
Gain: LNA			26dB		
Out of band rejection			>40dB (@ > +/- 100MHz f)		
Typical Noise Figure			-2.7dB		
Notch Filter rejection @787MHz			24dB		
Operating Voltage			3 - 5V DC		
Typcal Current (mA)			15		
Mechanical Data					
Dimensions (mm)	Height	80 (3.1")			
	Diameter	180 (7.1")			
Operating Temp			-40° / +80°C (-40° / +176°F)		
Colour			White	Black	
Ingress & Impact Protection			IK10 & IP69K		
Mounting Data					
Mounting type			Panel mount		
Max panel thickness (mm)			7 (0.27")		
Mounting hole (mm)			19 (3/4")		
Extension Cable Data					
			GPS Cable		All Other Cables
All Cables	Type	FR CS29 (UN118.03 / EN45545-2 HL2 Compliant)		CS32 (UN118.03 / EN45545-2 Compliant)	
		Fitted	Loose	Fitted	Loose
	Diameter (mm)	5 (0.2")			
	Length (m)	5 (16')			
Terminations					
4G/5G			4x SMA (m)		
WiFi			4x Reverse Polarity SMA		
GPS/GNSS			1x SMA(m)		

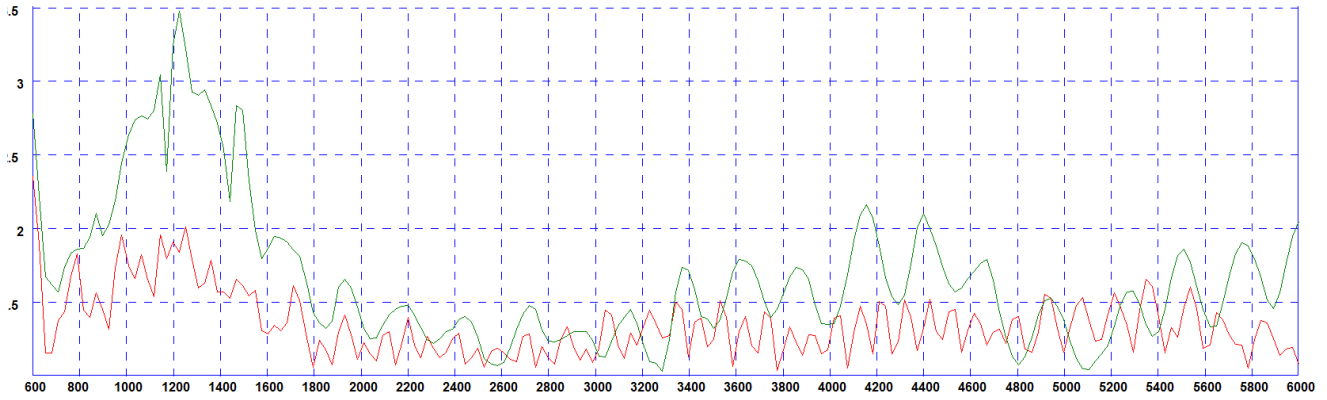
2x2 MiMo 4G/5G Dome Antenna Kit

LG-IN2446

PANORAMA  ANTENNAS

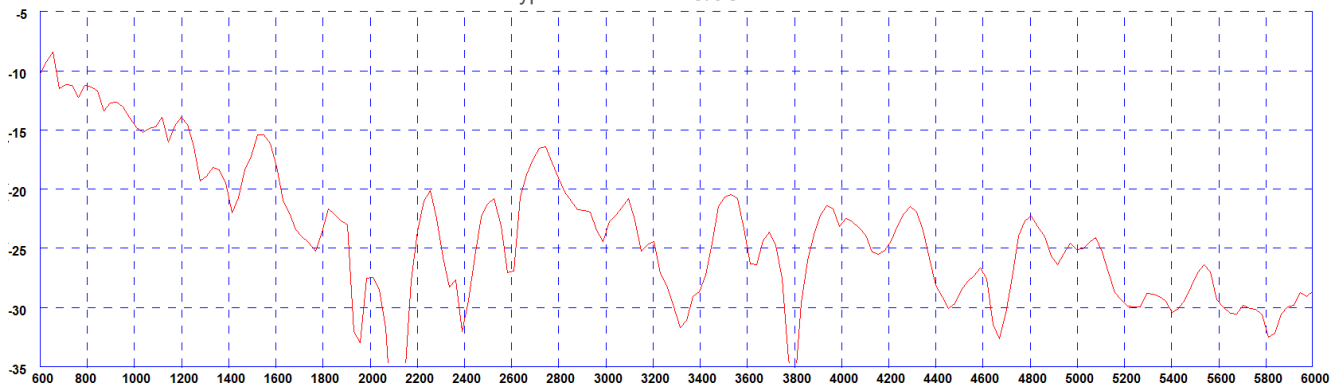
Electrical Data

Typical VSWR - 4G/5G Elements*



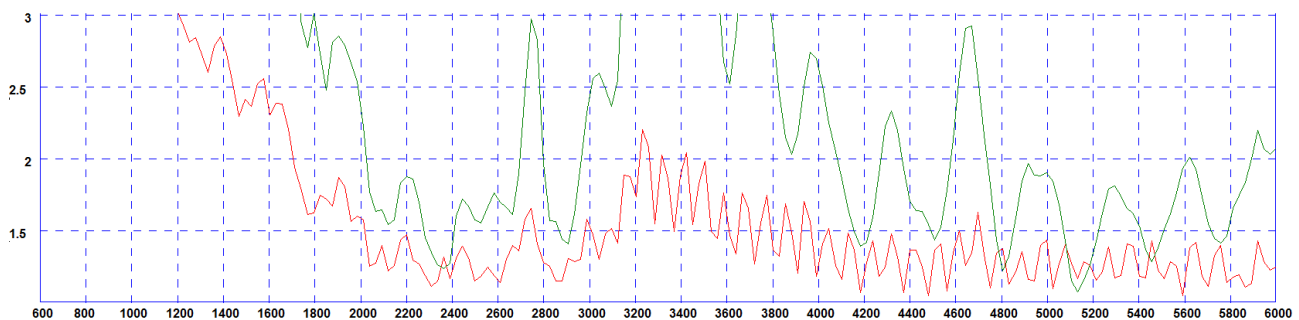
* Green Trace measured with 0.5m (1.5') of RG174 cable Red Trace measured with 5m (17') of CS32 Cable both on a 600x600mm (2'x2') groundplane

Typical Isolation - 4G/5G Elements*



* measured with 0.5m (1.5') of RG174 cable on a 600x600mm (2'x2') groundplane

Typical VSWR - WiFi Elements*



* Green Trace measured with 0.5m (1.5') of RG174 cable Red Trace measured with 5m (17') of CS32 Cable both on a 600x600mm (2'x2') groundplane