

PANORAMA ANTENNAS



GPS/GNSS Active Antenna 26dB LNA

The antenna is designed to be panel mounted and can be fitted on a conductive or non-conductive panel. Supplied with integrated flame retardant RG174 cables (Compliant to UNECE 118.01 and EN45545-2) and a halogen free flame retardant radome the antenna is suitable for many environments and applications. The antenna radome is available in black or white and meets IK10 for vandal resistance and IP69K for ingress protection.

LG-IN2445 is supplied as a complete plug and play kit with integrated 5m (16') ultra-low loss TPE extension cables and SMA (m) connectors for 4G/5G and GPS and Rev Pol SMA for WiFi.

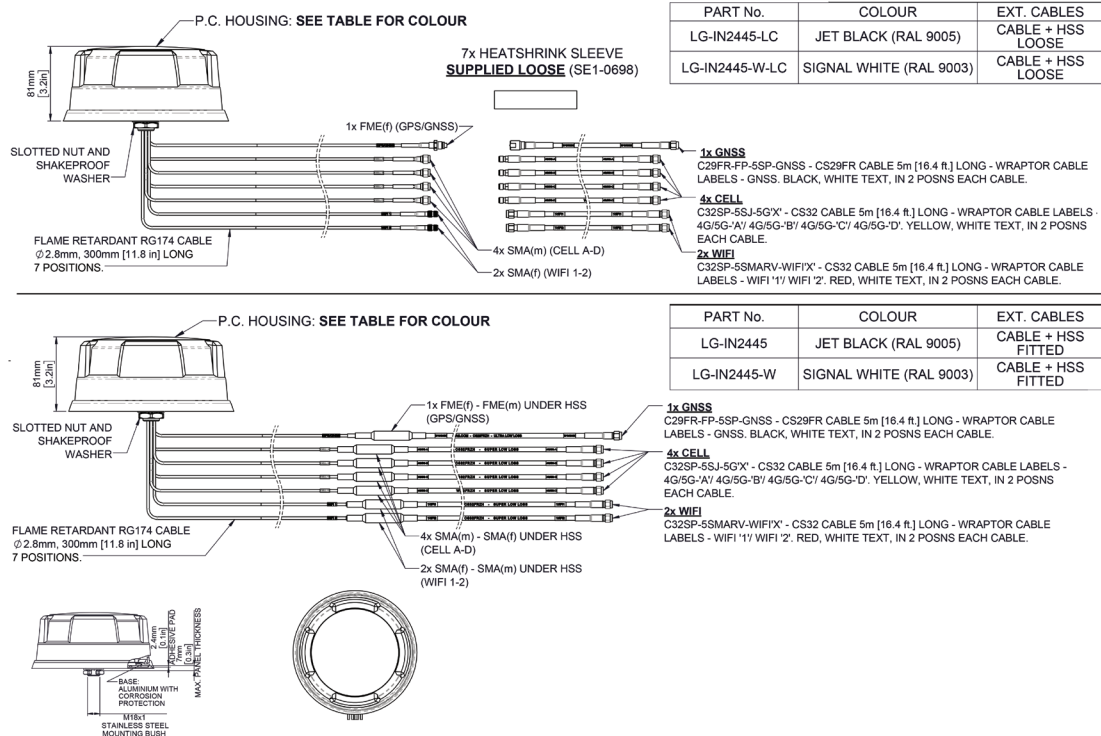


IP69K
RATED



Environmentally
Compliant - Meets
RoHS, REACH - PVC
Free

Technical Drawing



4x4 MiMo 4G/5G Dome Antenna Kit LG-IN2445

PANORAMA ANTENNAS

Part No.					
		LG-IN2445-W	LG-IN2445-W-LC	LG-IN2445	LG-IN2445-LC
Electrical Data					
Frequency Range (MHz)	4G/5G Elements		4x 617-960 / 1710-6000		
	WiFi Elements		2x 2.4/4.9-6GHz		
Peak Gain: Isotropic : (dBi)†	4G/5G Elements	617-960MHz	4		
		1710-3800MHz	8		
		4900-6000MHz	9		
	WiFi Elements	2.4 GHz	9		
		4.9-6.0GHz	9		
Typical Efficiency **	4G/5G Elements	617-960MHz	>50%		
		1710-3800MHz	>75%		
		4900-6000MHz	>85%		
		WiFi Elements	>70%		
Isolation ***	4G/5G Elements		>10dB		
	Wifi Elements		>12dB		
Correlation Co-efficient	4G/5G Elements		< 0.2		
	WiFi Elements		<0.1		
Nominal Impedance			50Ω		
GPS/GNSS Data					
Frequency Range (MHz)			1562-1612		
VSWR			<2.0:1 ± 4MHz		
Gain: LNA			26dB		
Out of band rejection			>40dB (@ > +/- 100MHz f)		
Typical Noise Figure			-2.7dB		
Notch Filter rejection @787MHz			24dB		
Operating Voltage			3 - 5V DC		
Typcal Current (mA)			15		
Mechanical Data					
Dimensions (mm)	Height	80 (3.1")			
	Diameter	180 (7.1")			
Operating Temp			-40° / +80°C (-40° / +176°F)		
Colour			White	Black	
Ingress & Impact Protection			IK10 & IP69K		
Mounting Data					
Mounting type			Panel mount		
Max panel thickness (mm)			7 (0.27")		
Mounting hole (mm)			19 (3/4")		
Extension Cable Data					
All Cables	Type	FR CS29 (UN118.03 / EN45545-2 HL2 Compliant)		CS32 (UN118.03 / EN45545-2 Compliant)	
		Fitted	Loose	Fitted	Loose
	Diameter (mm)	5 (0.2")			
	Length (m)	5 (16')			
Terminations					
4G/5G			4x SMA (m)		
WiFi			2x SMA Rev Pol		
GPS/GNSS			1x SMA(m)		

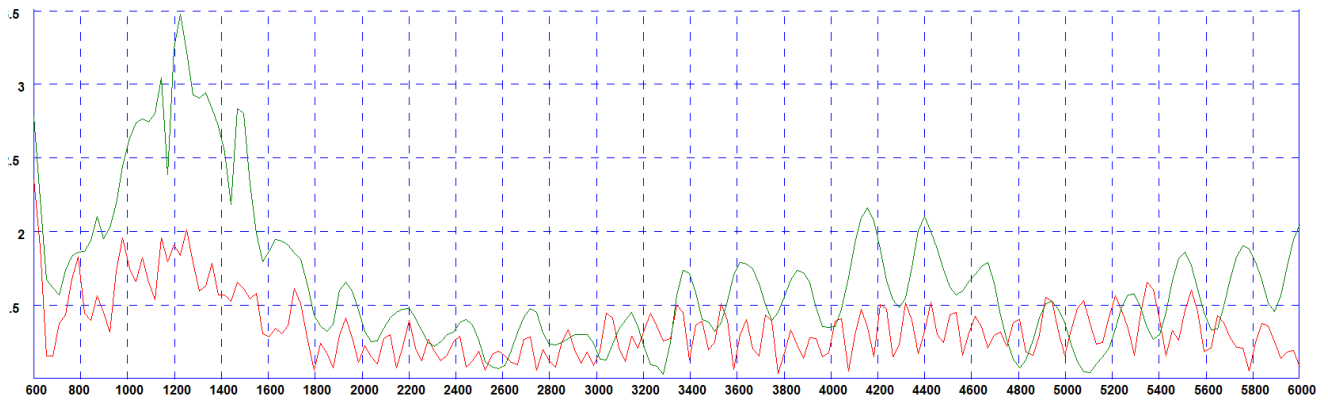
4x4 MiMo 4G/5G Dome Antenna Kit

LG-IN2445

PANORAMA ANTENNAS

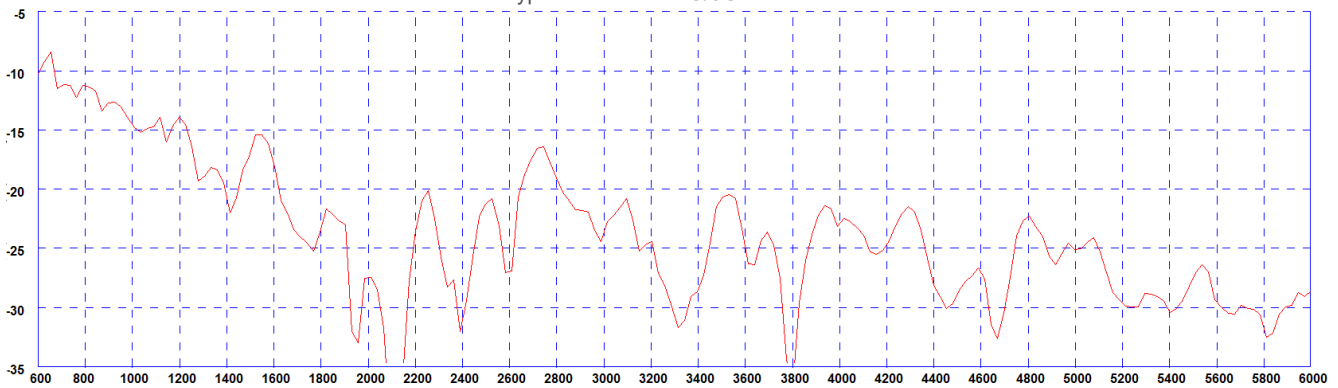
Electrical Data

Typical VSWR - 4G/5G Elements*



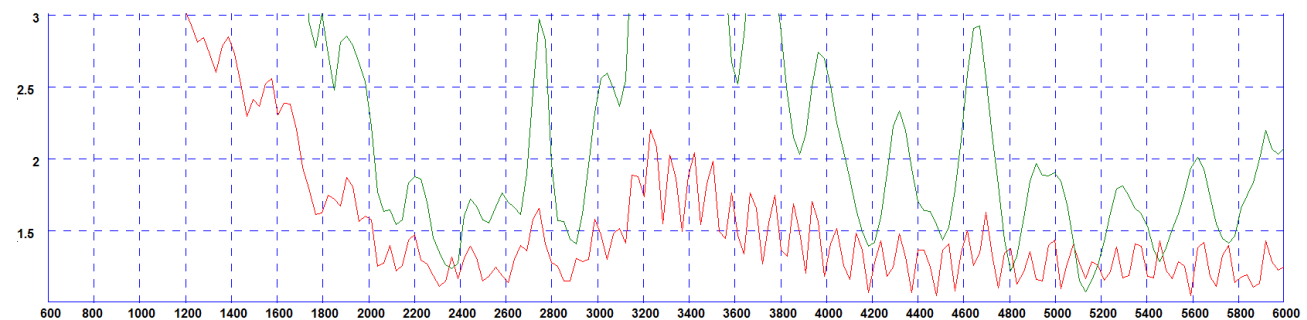
* Green Trace measured with 0.5m (1.5') of RG174 cable Red Trace measured with 5m (17') of CS32 Cable both on a 600x600mm (2'x2') groundplane

Typical Isolation - 4G/5G Elements*



* measured with 0.5m (1.5') of RG174 cable on a 600x600mm (2'x2') groundplane

Typical VSWR - WiFi Elements*



* Green Trace measured with 0.5m (1.5') of RG174 cable Red Trace measured with 5m (17') of CS32 Cable both on a 600x600mm (2'x2') groundplane