

# P1127E-500

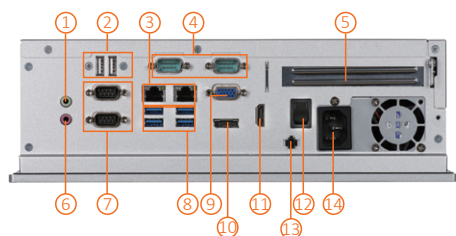
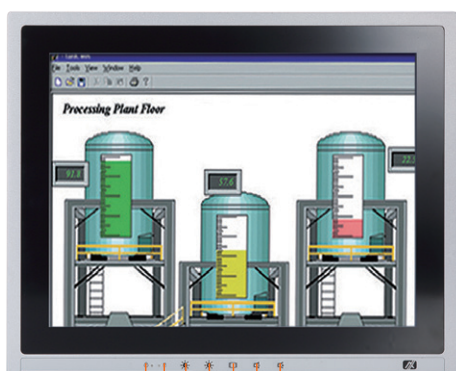
12.1" XGA TFT Expandable Industrial Touch Panel Computer with 7th/6th Gen Intel® Core™ i7/i5/i3, Celeron® & Pentium® Processor and PCI/PCIe Slot

## Features

- 12.1" XGA TFT LCD display
- LGA1151 socket 7th/6th gen Intel® Core™ i7/i5/i3, Celeron® & Pentium® processors
- Intel® H110 chipset
- Less screw design for easy installation
- 4 USB 3.0, 2 USB 2.0 and 4 COM
- One PCIe x4 or one PCI slot
- Built-in speakers and optional Wi-Fi 802.11 b/g/n module
- Robust IP65 compliant aluminum front bezel
- Supports 5 OSD keys in front panel



1. Display status LED
2. SATA status LED
3. Brightness-
4. Brightness +
5. Display monitor ON/OFF
6. Volume-
7. Volume +



- |                                    |                             |
|------------------------------------|-----------------------------|
| 1. 1 x Line-out                    | 8. 4 x USB 3.0              |
| 2. 2 x USB 2.0                     | 9. 1 x VGA                  |
| 3. 2 x LAN                         | 10. 1 x DisplayPort         |
| 4. 2 x RS-232                      | 11. 1 x HDMI                |
| 5. PCI or PCIe x4 slot             | 12. Switch for power on/off |
| 6. 1 x Mic-in                      | 13. Remote switch button    |
| 7. 1 x RS-232/422/485 & 1 x RS-232 | 14. AC plug                 |



▲ Side view



▲ Back view

## Introduction

The P1127E-500 is a multimedia 12.1" touch panel PC for kiosk application. It has a fashionable mechanism design and industrial-grade material front bezel which can avoid damage from chemical corrosion. To meet the demands of multimedia application, the P1127E-500 is powered by a high performance LGA1151 socket 7th/6th generation Intel® Core™ processor with the Intel® H110 chipset. It features four COM ports, two Gigabit Ethernet and up to 32GB memory of dual-channel DDR4-2133 that delivers high computing capability for high performance-demanding applications. The industrial touch panel PC is most suitable for kiosk, factory and automation.

### Expandable for 1 PCIe or 1 PCI

The P1127E-500 has one PCIe x4 or one PCI slot for expansion purpose. User can easily plug in standard half-size PCI or PCIe card based on any application needs.

### Speaker and WLAN Antenna Supported

The P1127E-500 features built-in speakers for kiosk application to display multimedia content program. It also supports WLAN module antenna (optional) for wireless network connectivity.

### Friendly Less Screw Design

The P1127E-500 is designed with easy of maintenance in mind. There are only three screws on the back chassis, so that technicians can quickly remove the system's back cover with minimum effort.

## Specifications

Front Bezel	Aluminum w/ IP65/NEMA 4 rugged protection	
LCD Panel	Display Type	12.1" XGA TFT LCD
	Brightness	500 nits
	Resolution	1024 x 768 pixels
	Viewing Angle	160°/140°
Main System	CPU	LGA1151 socket 7th/6th gen Intel® Core™ i7/i5/i3, Celeron® & Pentium® processor
	Chipset	Intel® H110
	System Memory	2 x 288-pin DDR4-2133 Long-DIMM, up to 32GB
	BIOS	AMI UEFI BIOS
	Storage	1 x 2.5" SATA HDD (9.5 mm height)
	Drive	N/A
IO Connector	Watchdog Timer	255 levels, 1 to 255 sec.
	3 x RS-232 1 x RS-232/422/485 1 x HDMI 1 x VGA 1 x DisplayPort 4 x USB 3.0 2 x USB 2.0 2 x 10/100/1000 Mbps Ethernet (Intel® i219-LM/i211-AT) 1 x Audio (Mic-in & Line-out) 1 x Remote Power Switch	
TPM	N/A	
Expansion Interface	1 x PCIe x4 or 1 x PCI	
Touchscreen	5-wire resistive type	
	Light transmission 79%	
	1 million activations (typical) at a single point	
Power Supply	100 to 240 VAC, 200W	
Power Consumption	121W	
Dimensions	314.2 mm (12.37") (W) x 105 mm (4.13") (D) x 253.7 mm (9.99") (H)	
Packing Dimensions	510 mm (20.08") (W) x 190 mm (7.48") (D) x 540 mm (21.26") (H)	
Weight(net/gross)	4.2 kg (9.26 lb)/6.3 kg (13.89 lb)	
Operating temperature	0°C to +50°C (+32°F to +122°F)	
Relative humidity	10% to 90% @ +40°C, non-considering	
Operating vibration	1.0G, 5- 500 Hz, random	
Certifications	CE	

## Ordering Information

P1127E-500-US x4 (P/N: E221127109)	12.1" XGA expandable industrial touch panel computer with LGA1151 socket 7th/6th gen Intel® Core™ i7/i5/i3, Pentium® & Celeron® processor, resistive touch screen, PCIe x4 slot, 100 to 240 VAC with US power cord
P1127E-500-US w/PCI (P/N: E221127107)	12.1" XGA expandable industrial touch panel computer with LGA1151 socket 7th/6th gen Intel® Core™ i7/i5/i3, Pentium® & Celeron® processor, resistive touch screen, PCI slot, 100 to 240 VAC with US power cord

\* Other configuration by request

\* Specification and certifications may vary based on different requirements

## Packing List

1 x P1127E-500  
 1 x Panel mount kit  
 1 x US power cord

## Optional Accessories

Wi-Fi kit

881211270A0E	VESA & wall mount kit
E981604011	ATC10 (VESA arm clamp type)
E981604012	ATW10 (VESA arm wall mount)
E226171119	Stand kit
59403200B00E	Remote power switch cable (100 cm)

## Optional EOS Installation

Windows® 7

Windows® 8.1

Windows® 10 IoT Enterprise

## Optional OS Installation

Skylake	Windows® 7
	Windows® 8.1
	Windows® 10
Kaby Lake	Windows® 10

## Dimensions

