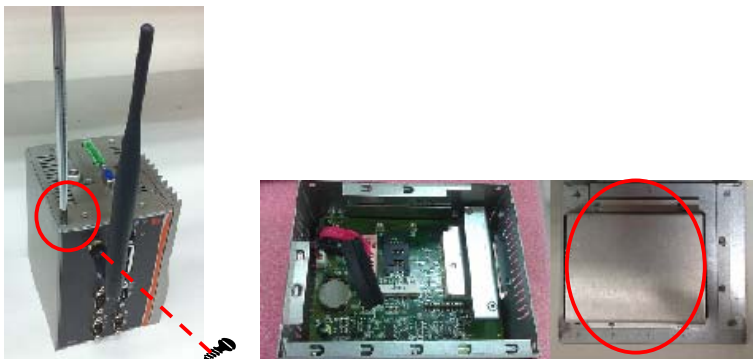
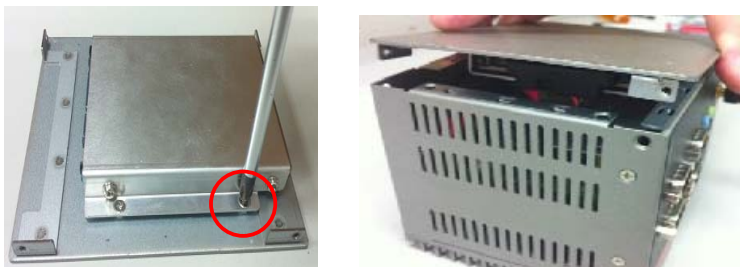


Installing the Hard Disk Drive

- Step 1** Turn off the system.
- Step 2** Loosen these screws, and remove the cover from the system.
- Step 3** Loosen these screws and remove the Hard Disk Drive fixing bracket.



- Step 4** Insert the Hard Disk Drive into the socket until it is firmly seated. Put the Hard Disk Drive fixing bracket back to the system, and fasten screws tight close the Hard Disk Drive fixing bracket.



- Step 5** Put the cover back to the system, and fasten screws tight close the chassis.

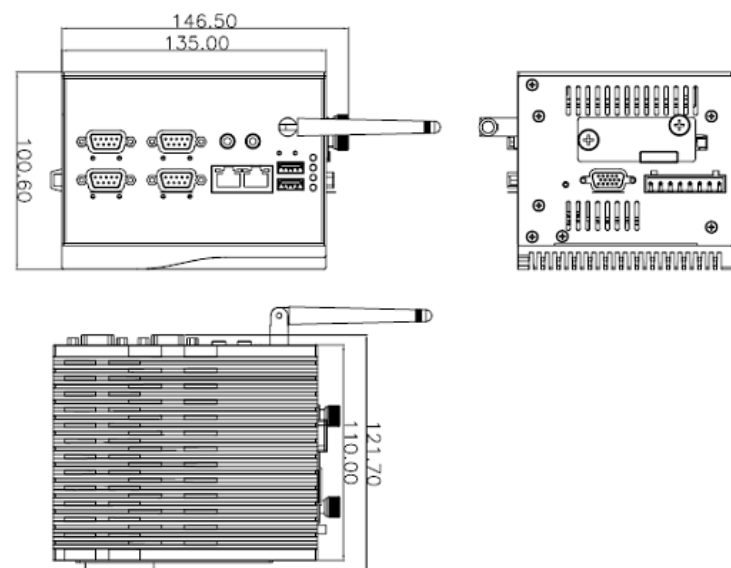
rBOX310-FL Quick Installation Guide

Checklist

- | | |
|---|---|
| ✓ rBOX310-FL System Unit x 1 | ✓ Power terminal block x 1 |
| ✓ rBOX310-FL Quick Installation Guide x 1 | ✓ CD x 1 (for Driver and User's Manual) |
| ✓ Thermal Pad for Memory x 1 | ✓ Din-rail Kit x1 |
| ✓ Screws | |

Note: Please contact your local vendors if any damaged or missing items.

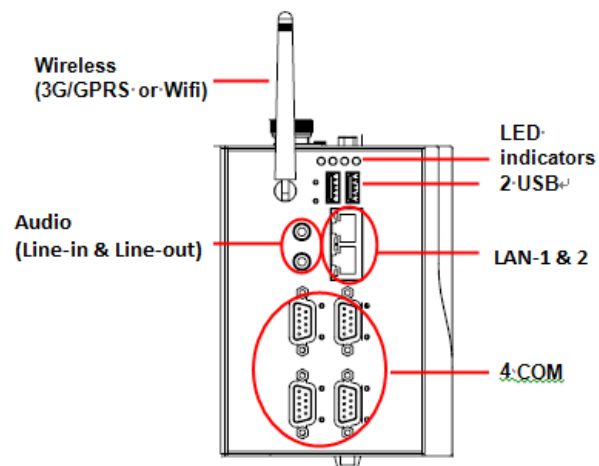
Dimensions



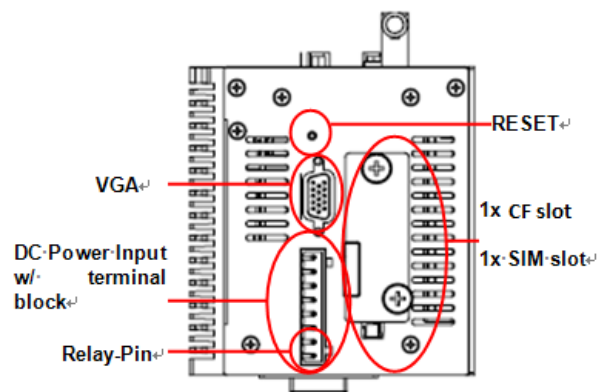
I/O Outlets

The following figures show you I/O outlets on front view and top view of the rBOX310-FL.

• Front View



• Top View

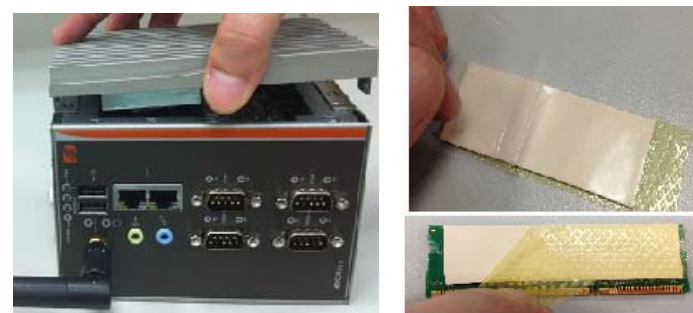


Installing the Memory Module

Step 1 Turn off the system.

Step 2 Loosen these screws, and remove the top cover from the system.

Step 3 Take the thermal pad from the package, take off the masks of the thermal pad from two sides and paste thermal pad to the bottom side of the memory module as bellow fingers.



Step 4 Using two fingers to hold the memory module, and insert the gold colored contact into the socket. Push the module down, and we recommend using “LDC737” silicone on the two sides of the memory for good ability of vibration.

Step 5 Take off the memory thermal mask from the cover back.



Step 6 Close the cover to the chassis, and fasten all screws.