

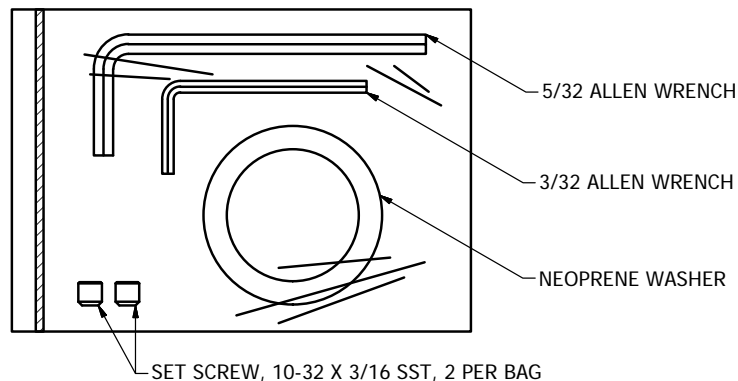
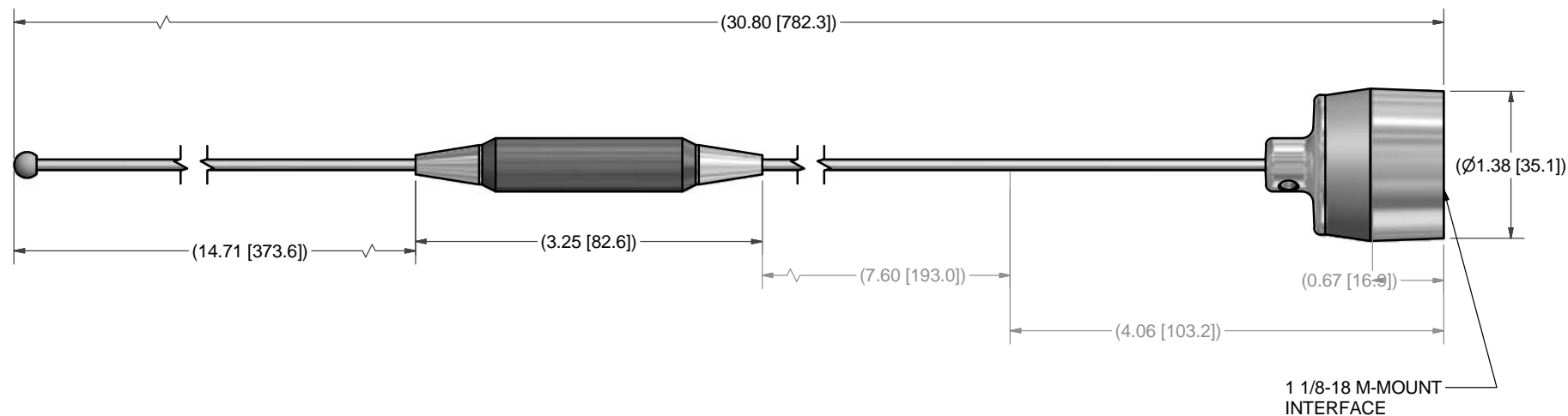
NOTES: UNLESS OTHERWISE SPECIFIED


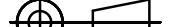
1. TEST PER ANTENNA ELECTRICAL SPECIFICATIONS.  
(SEE PCTEL CATALOG FOR DETAIL)

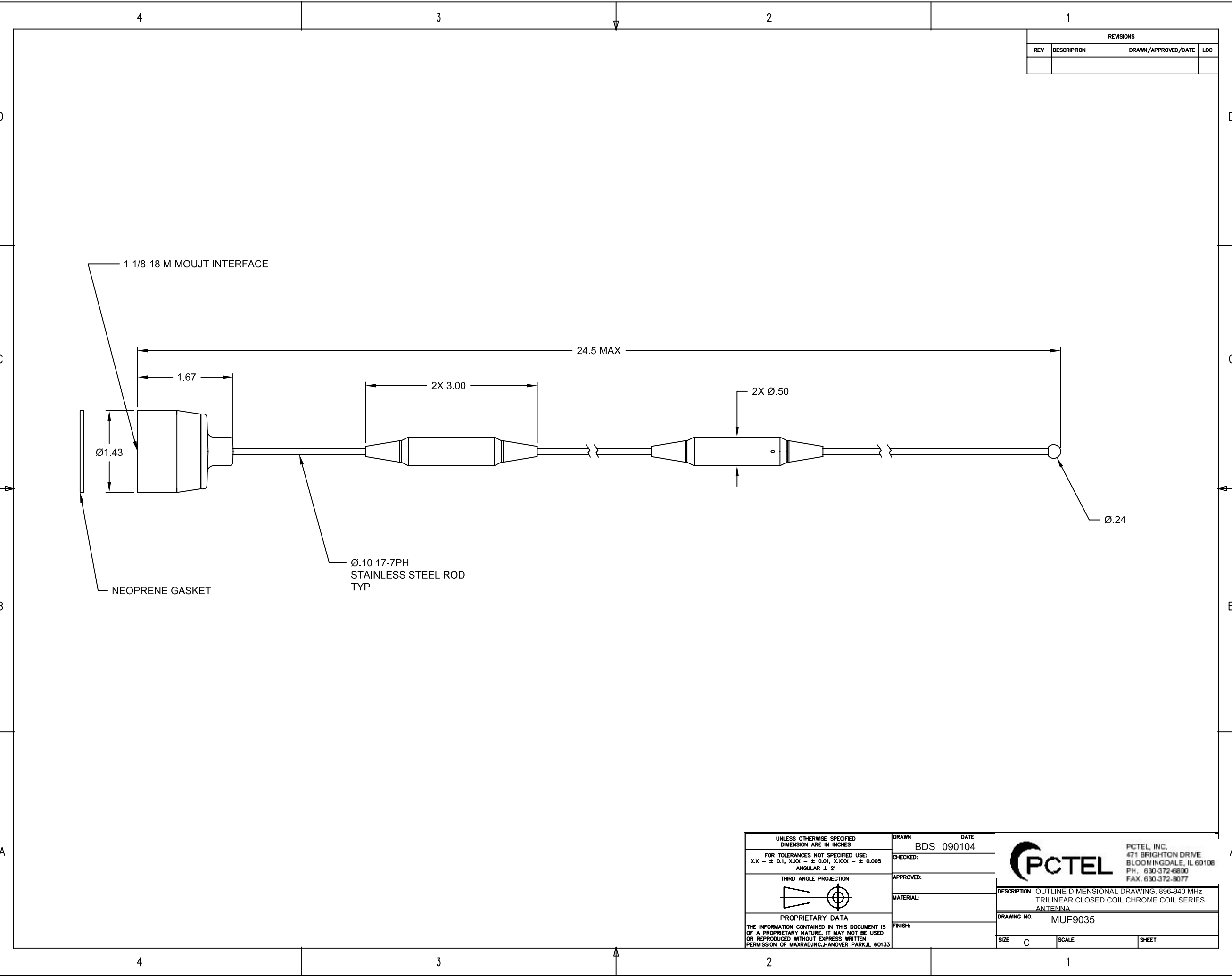
FREQUENCY RANGE: 440 - 480 MHz  
NOMINAL IMPEDANCE: 50 Ohms  
NOMINAL GAIN: 4.5 dB  
MAX POWER: 200 WATTS  
VSWR (MAX) < 2.0:1

2. DIMENSIONS IN PARENTHESIS ARE FOR REFERENCE  
ONLY AND NO TOLERANCE IS IMPLIED.

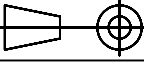
REVISION HISTORY			
REV	DESCRIPTION	DATE	APPROVED
A	OUTLINE DIMENSIONAL DRAWING RELEASED	17AUG15	IP



UNLESS OTHERWISE SPECIFIED DUAL DIMENSIONING XX.Xin [XX.Xmm]		DRAWN IP		DATE 8/31/2009				PCTEL, INC. 471 BRIGHTON DRIVE BLOOMINGDALE, IL 60108 PH. 630-372-6800 FAX. 630-372-8077	
FOR TOLERANCES NOT SPECIFIED USE: XX in ± .1 in, XXX in ± .01 in, XXXX in ± .005 in [X mm ± 3 mm], [XX mm ± .3 mm], [XXX mm ± .13 mm] ANGULAR ± 1°, FRACTIONAL ± 1/64		CHECKED		DATE					
		MATERIAL:		SEE COMPONENT PRINTS		DESCRIPTION WIDEBAND UHF CHROME COIL W/SPR			
		FINISH:		SEE COMPONENT PRINTS					
PCTEL PROPRIETARY DATA THE INFORMATION AND/OR DRAWINGS CONTAINED IN THIS DOCUMENT IS CONFIDENTIAL AND PROPRIETARY TO PCTEL, INC. AND MAY NOT BE USED, REPRODUCED, IN WHOLE OR IN PART, OR MODIFIED IN ANY WAY WITHOUT THE EXPRESS WRITTEN PERMISSION OF AN AUTHORIZED REPRESENTATIVE OF PCTEL, INC.									
DRAWING NO.						ODD_MUF4505			
SIZE		B		SCALE		1:1		SHEET 1 OF 1	



REVISIONS			
REV	DESCRIPTION	DRAWN/APPROVED/DATE	LOC

UNLESS OTHERWISE SPECIFIED DIMENSION ARE IN INCHES		DRAWN	DATE
FOR TOLERANCES NOT SPECIFIED USE: X.X - ± 0.1, X.XX - ± 0.01, X.XXX - ± 0.005 ANGULAR ± 2°		BDS	090104
THIRD ANGLE PROJECTION 		CHECKED:	
PROPRIETARY DATA THE INFORMATION CONTAINED IN THIS DOCUMENT IS OF A PROPRIETARY NATURE. IT MAY NOT BE USED OR REPRODUCED WITHOUT EXPRESS WRITTEN PERMISSION OF MAXRAD, INC., HANOVER PARK, IL 60133		APPROVED:	
		MATERIAL:	
		FINISH:	
		DESCRIPTION OUTLINE DIMENSIONAL DRAWING, 896-940 MHz TRILINEAR CLOSED COIL CHROME COIL SERIES ANTENNA	
		DRAWING NO. MUF9035	
SIZE	C	SCALE	SHEET



PCTEL, INC.  
471 BRIGHTON DRIVE  
BLOOMINGDALE, IL 60108  
PH. 630-372-6800  
FAX. 630-372-8077