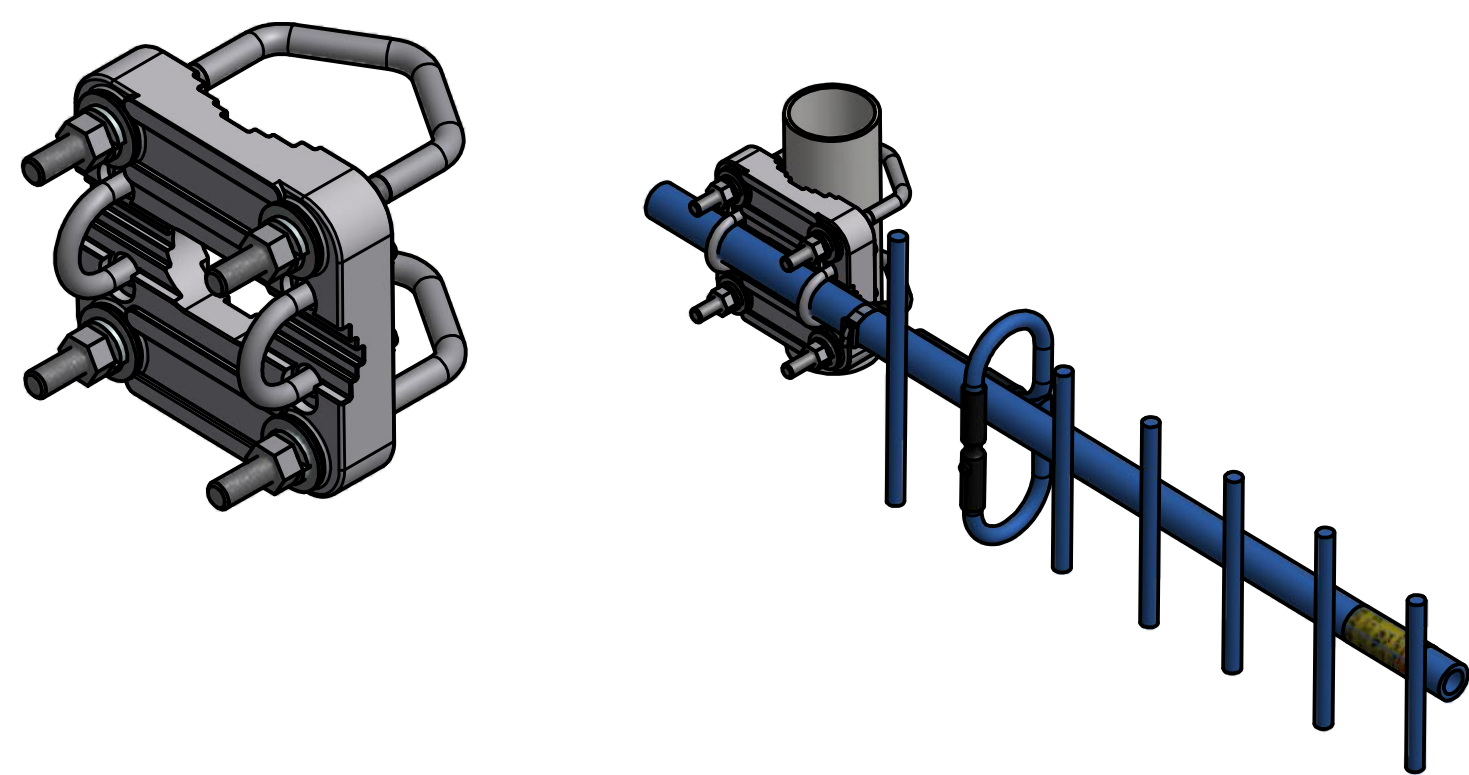


IMPORTANT NOTICE:

The antenna should be handled with care.
Do not stand on or drop antenna.



Note:

ANTENNA SOLD SEPARATELY.
Pipe mounted. Hardware included.
Fits boom OD of 0.5 - 0.84".
Mounts to 1.25 - 2.4" OD.

Safety Guidelines

1. Antenna installation should only be performed by trained personnel.
2. Always wear the appropriate safety devices, and never climb on an antenna. Observe electrical shock hazard caution.
3. Keep antenna clear of all electrical transmission lines.

Antenna Installation Guidelines

1. Upon receipt of antenna, check contents for damage. Notify the carrier immediately if any of the contents are missing or damaged.
2. Fix antenna securely to tower, ensuring correct polarization with feed-line down.
3. Always weatherproof the cable connection. Failure to do so will degrade antenna signal over time.

YAGI MOUNT INSTALLATION INSTRUCTIONS

Mount Kit Contents:

- (1) 1 - Antenna Mount Bracket
- (2) 2 - 5/16"-18 U-Bolt
- (3) 4 - 5/16"-18 Hex Nut
- (4) 4 - 5/16" Flatwasher
- (5) 2 - 1/4"-20 U-Bolt
- (6) 4 - 1/4"-20 Hex Nut
- (7) 4 - 1/4" Flatwasher

Recommended Torque:

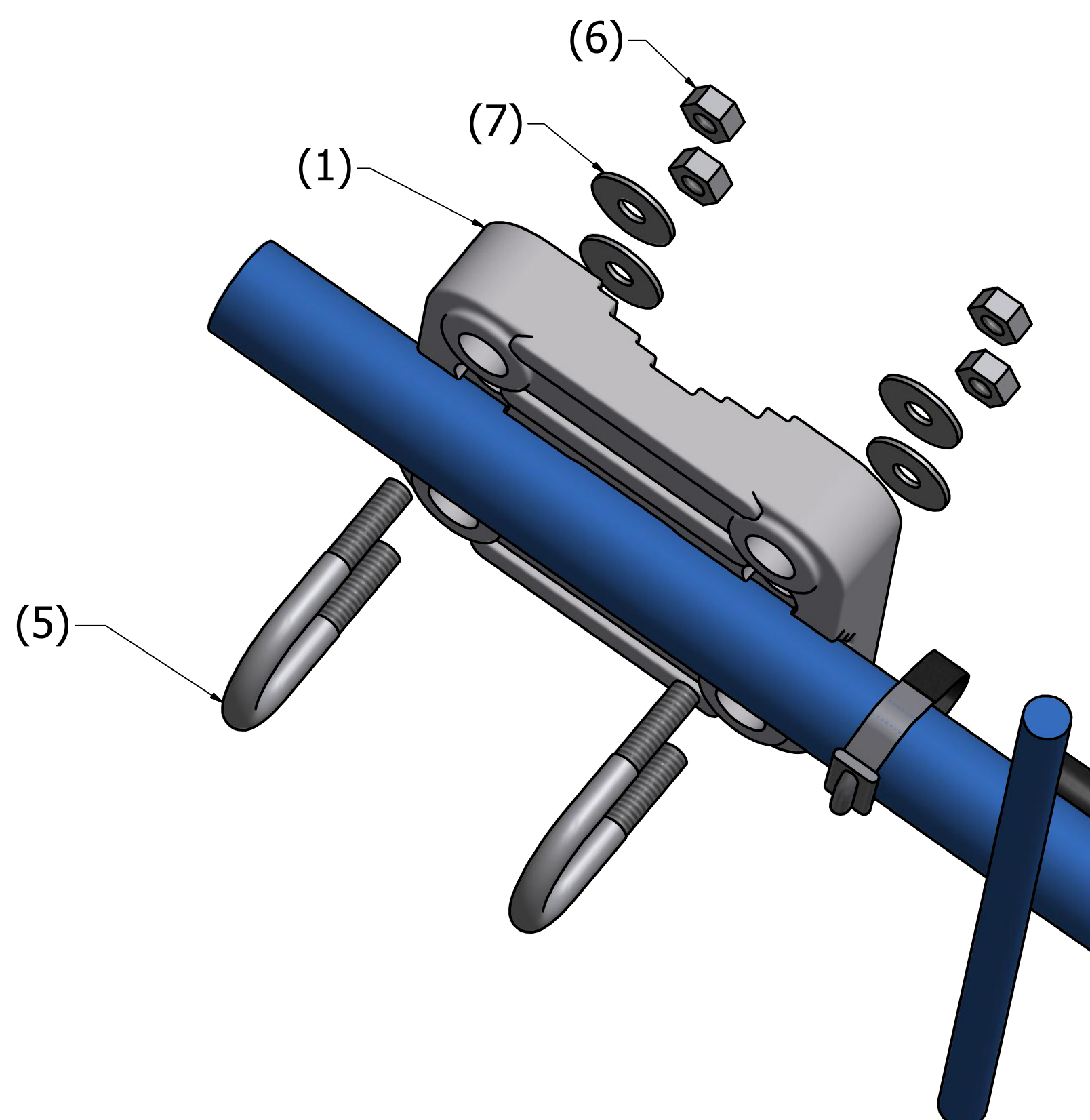
1/4"-20 UNC Thread, 8 ft. lbs. Torque
5/16"-18 UNC Thread, 17 ft. lbs. Torque

STEP 1:

Remove antenna and mount kit from packaging.

STEP 2:

Attach antenna boom (0.5 - 0.84" OD) to antenna mount bracket (1) by clamping the antenna boom using the smaller U-Bolts (5) as shown.



STEP 3:

Attach antenna mount bracket to pole (1.25 - 2.4" OD) by clamping the pole using the larger U-Bolts (2) as shown.

