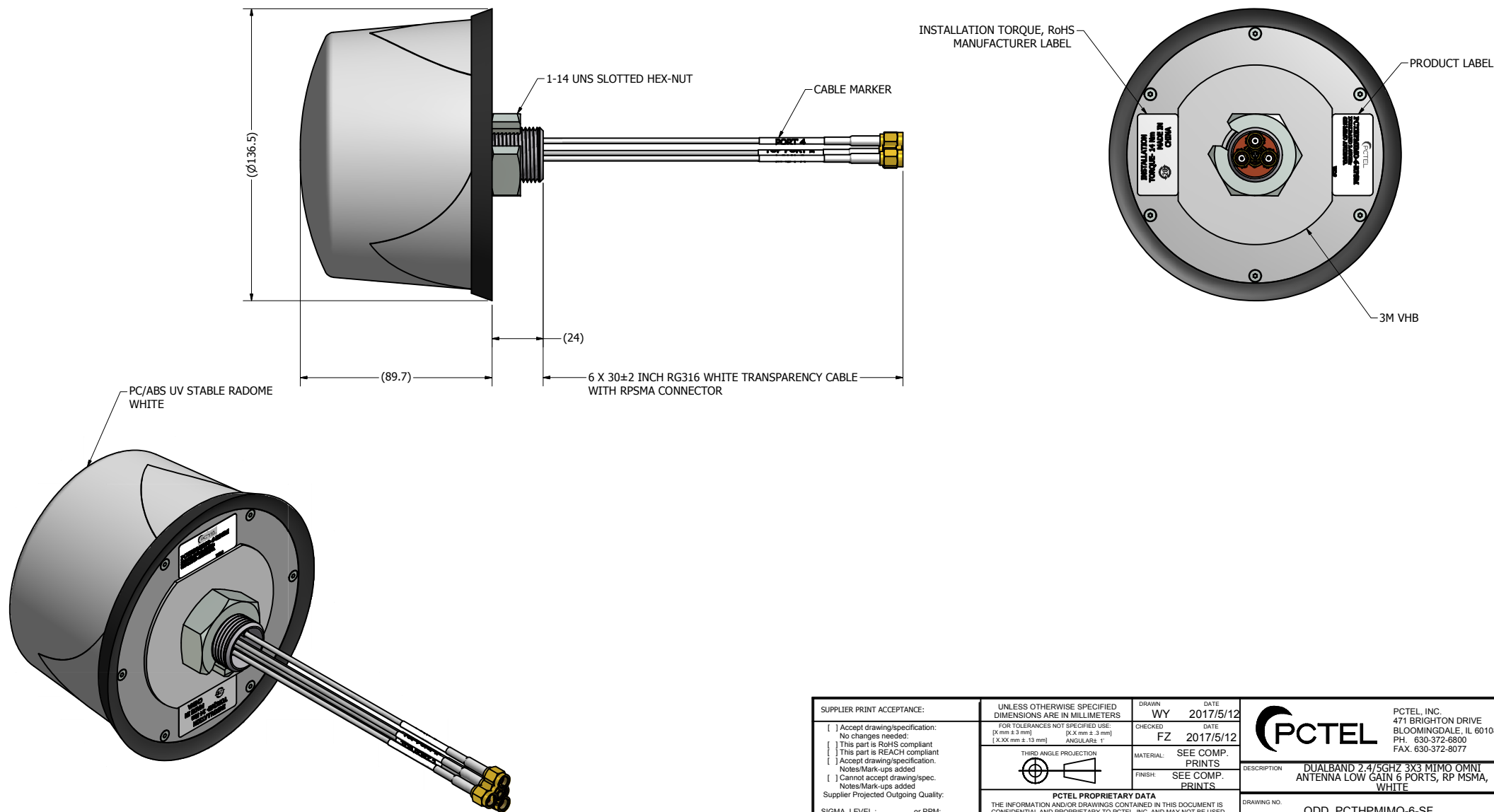




AND NO TOLERANCE IS IMPLIED.

REV	DESCRIPTION	DATE	APPROVED
1	RELEASE FOR PROTOTYPE(C21500)	2017/5/12	WY

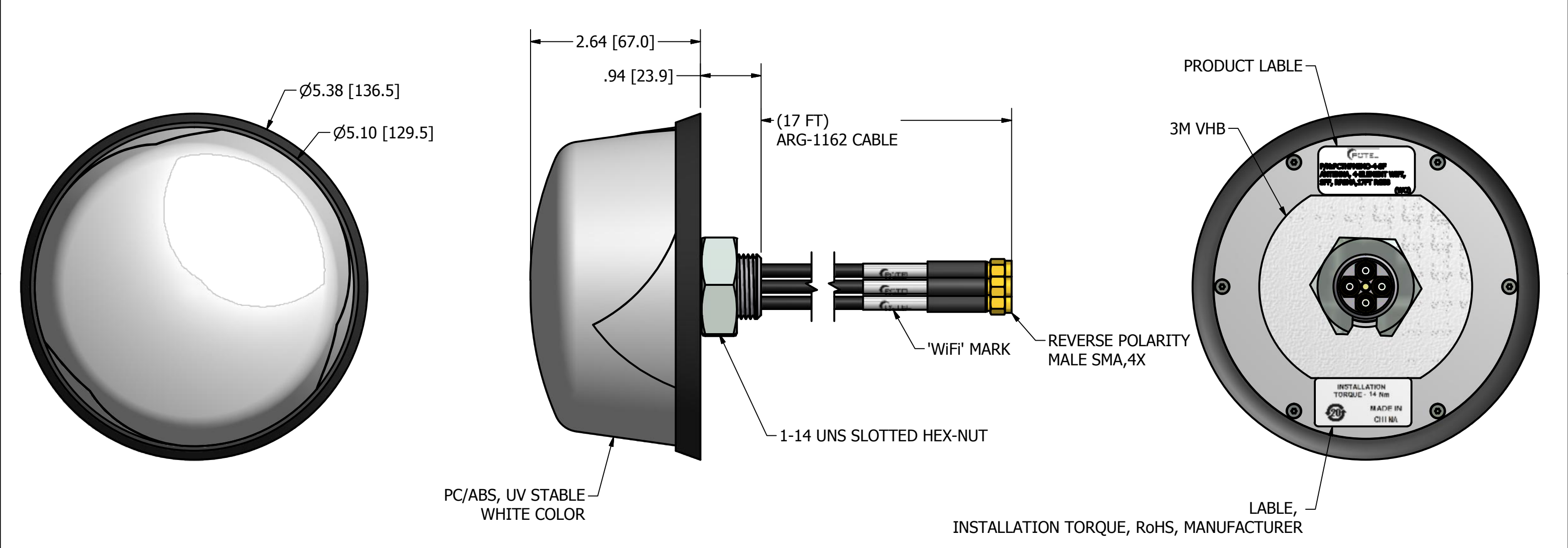



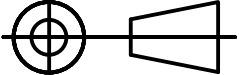
SUPPLIER PRINT ACCEPTANCE: <input type="checkbox"/> Accept drawing/specification: No changes needed: <input type="checkbox"/> This part is RoHS compliant <input type="checkbox"/> This is REACH compliant <input type="checkbox"/> I accept drawing/specification. Notes/Mark-ups added: <input type="checkbox"/> I cannot accept drawing/spec. Notes/Mark-ups added: Supplier Projected Outgoing Quality:		UNLESS OTHERWISE SPECIFIED DIMENSIONS ARE IN MILLIMETERS FOR TOLERANCES NOT SPECIFIED USE: (X:mm ± 3 mm) (X:mm ± 3 mm) (X:XX mm ± 12 mm) ANGULAR: 1° THIRD ANGLE PROJECTION 		DRAWING DATE WY 2017/5/12 CHECKED DATE FZ 2017/5/12 MATERIAL: SEE COMP. PRINTS FINISH: SEE COMP. PRINTS		 PCTEL, INC. 4711 BRIGHTON DRIVE BLOOMINGDALE, IL 60108 PHL 630-372-6800 FAX: 630-372-8077	
SIGMA LEVEL: _____ or PPM: _____		PCTEL PROPRIETARY DATA THE INFORMATION AND/OR DRAWINGS CONTAINED IN THIS DOCUMENT IS CONFIDENTIAL AND PROPRIETARY TO PCTEL, INC. AND MAY NOT BE RE- PRODUCED, IN WHOLE OR IN PART, OR MODIFIED IN ANY WAY WITHOUT THE EXPRESS WRITTEN PERMISSION OF AN AUTHORIZED REPRESENTATIVE OF PCTEL, INC.		DESCRIPTION DUALBAND 2.4/5GHz 3X3 MIMO OMNI ANTENNA LOW GAIN 6 PORTS, RP MSMA, WHITE		DRAWING NO. ODD_PCTHPM06-6SF	
Signature _____ Date: _____				SIZE A2 SCALE 1:1 SHEET 1 OF 1			

NOTES: UNLESS OTHERWISE SPECIFIED

1. TEST PER ANTENNA ELECTRICAL SPECIFICATIONS.
FREQUENCY RANGE: (802.11n DUAL BAND WiFi) 2.3-2.8 GHz/4.9-5.9 GHz
NOMINAL IMPEDANCE: 50 Ohms
POLARIZATION: VERTICAL, LINEAR
NOMINAL GAIN:1.5dBi @2.3-2.8GHz, 0.5dBi@4.9-5.9GHz
MAX POWER: 25WATTS
VSWR (MAX) < 1.8:1
2. DIMENSIONS IN PARENTHESIS ARE FOR REFERENCE ONLY AND NO TOLERANCE IS IMPLIED.

REVISION HISTORY			
REV	DESCRIPTION	DATE	APPROVED
1	RELEASE FOR PILOT	02FEB15	JZ
1.1	CHNAGE VSWR/CABEL	23/03/15	ZYL

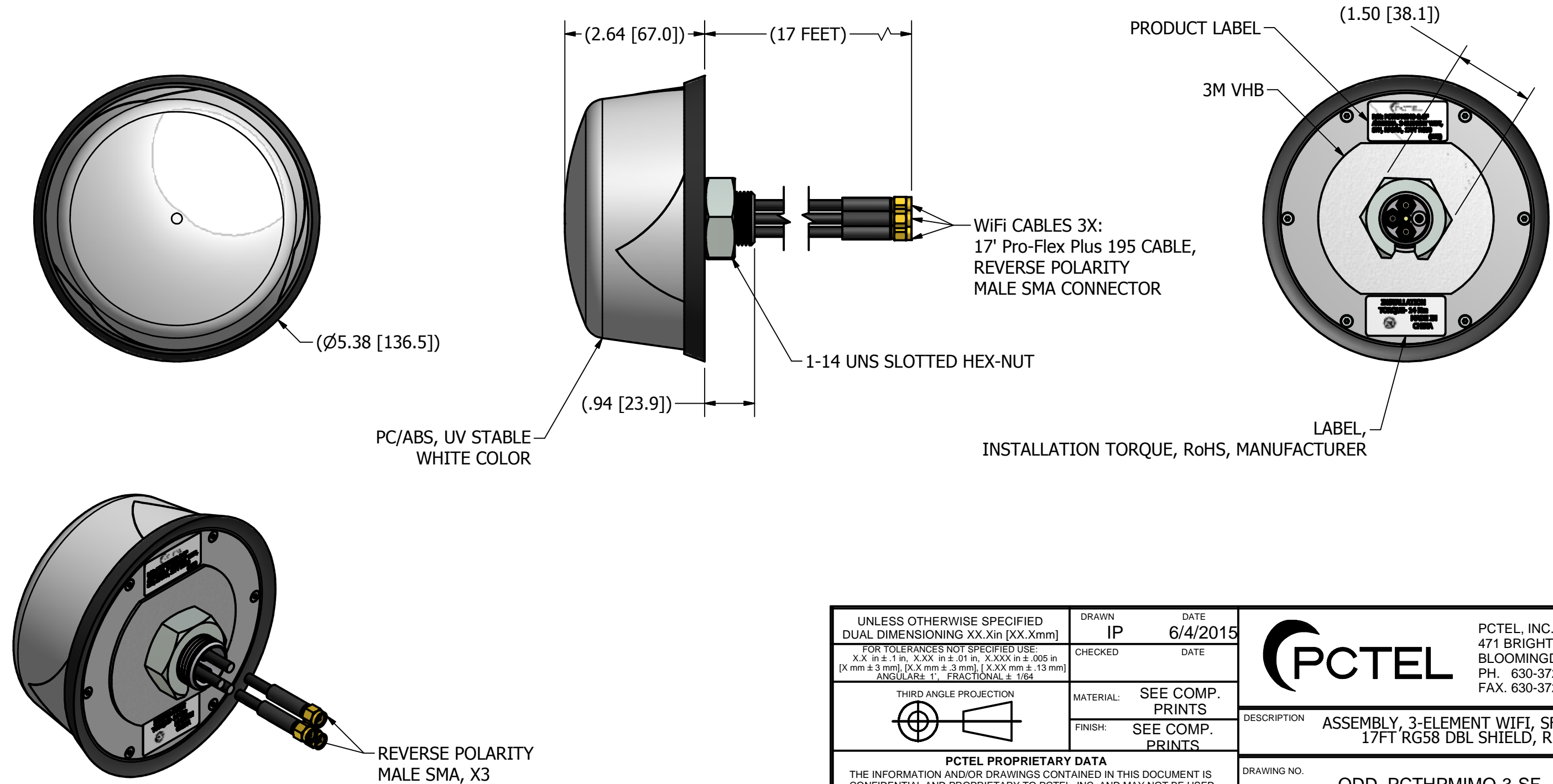


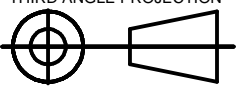

UNLESS OTHERWISE SPECIFIED DUAL DIMENSIONING XX.Xin [XX.Xmm]		DRAWN JZ	DATE 2015/2/2	 <div>PCTEL, INC. 471 BRIGHTON DRIVE BLOOMINGDALE, IL 60108 PH. 630-372-6800 FAX. 630-372-8077</div>
FOR TOLERANCES NOT SPECIFIED USE: REFERENCE		CHECKED	DATE	
	MATERIAL:	SEE COMP. PRINTS		DESCRIPTION ASSEMBLY, 4-ELEMENT WIFI, SFF, WHITE, 17FT ARG-1162, RPSMA
	FINISH:	SEE COMP. PRINTS		
PCTEL PROPRIETARY DATA THE INFORMATION AND/OR DRAWINGS CONTAINED IN THIS DOCUMENT IS CONFIDENTIAL AND PROPRIETARY TO PCTEL, INC. AND MAY NOT BE USED, REPRODUCED, IN WHOLE OR IN PART, OR MODIFIED IN ANY WAY WITHOUT THE EXPRESS WRITTEN PERMISSION OF AN AUTHORIZED REPRESENTATIVE OF PCTEL, INC.				DRAWING NO. ODD_PCTHPMIMO-4-SF
SIZE B		SCALE		SHEET 1 OF 1

NOTES: UNLESS OTHERWISE SPECIFIED

1. TEST PER ANTENNA ELECTRICAL SPECIFICATIONS.
FREQUENCY RANGE: (802.11n DUAL BAND WiFi) 2.3-2.8 GHz/4.9-5.9 GHz
NOMINAL IMPEDANCE: 50 Ohms
NOMINAL GAIN: 1.5 dBi @2.3-2.8 GHz, 0.5 dBi @4.9-5.9 GHz
MAX POWER: 25 WATTS
VSWR(MAX) < 1.8:1
2. ALL MATERIALS SHALL BE ROHS COMPLIANT.
3. PARTS SHALL BE PACKAGED TO PREVENT DAMAGE IN SHIPMENT AND HANDLING.
4. DIMENSIONS IN PARANTHESIS ARE FOR REFERENCE ONLY AND NO TOLERANCE IS IMPLIED.

REVISION HISTORY			
REV	DESCRIPTION	DATE	APPROVED
A	OUTLINE DIMENSIONAL DRAWING RELEASED	04JUN15	FXG

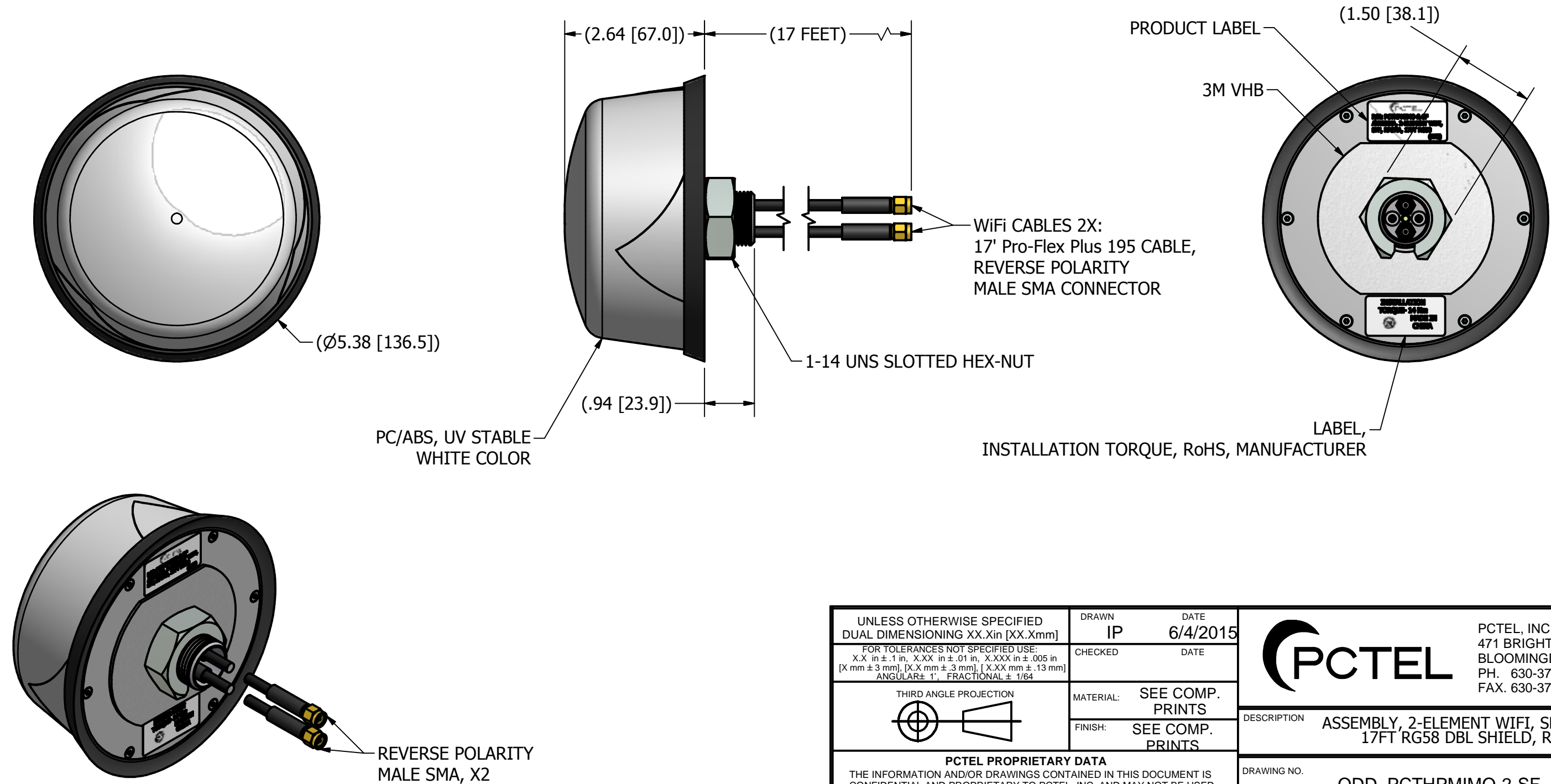


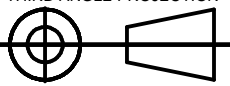

UNLESS OTHERWISE SPECIFIED DUAL DIMENSIONING XX.Xin [XX.Xmm]		DRAWN IP	DATE 6/4/2015
FOR TOLERANCES NOT SPECIFIED USE: X.X in ± .1 in, X.XX in ± .01 in, X.XXX in ± .005 in [X mm ± 3 mm], [X.X mm ± .3 mm], [X.XX mm ± .13 mm] ANGULAR ± 1°, FRACTIONAL ± 1/64		CHECKED	DATE
THIRD ANGLE PROJECTION 		MATERIAL: SEE COMP. PRINTS	
		FINISH: SEE COMP. PRINTS	
PCTEL PROPRIETARY DATA THE INFORMATION AND/OR DRAWINGS CONTAINED IN THIS DOCUMENT IS CONFIDENTIAL AND PROPRIETARY TO PCTEL, INC. AND MAY NOT BE USED, REPRODUCED, IN WHOLE OR IN PART, OR MODIFIED IN ANY WAY WITHOUT THE EXPRESS WRITTEN PERMISSION OF AN AUTHORIZED REPRESENTATIVE OF PCTEL, INC.			
		 PCTEL, INC. 471 BRIGHTON DRIVE BLOOMINGDALE, IL 60108 PH. 630-372-6800 FAX. 630-372-8077	
		DESCRIPTION ASSEMBLY, 3-ELEMENT WIFI, SFF, WHITE, 17FT RG58 DBL SHIELD, RPSMA	
		DRAWING NO. ODD_PCTHPMIMO-3-SF	
SIZE B	SCALE 1/2	SHEET 1 OF 1	

NOTES: UNLESS OTHERWISE SPECIFIED

1. TEST PER ANTENNA ELECTRICAL SPECIFICATIONS.
FREQUENCY RNAGE: (802.11n DUAL BAND WiFi) 2.3-2.8 GHz/4.9-5.9 GHz
NOMINAL IMPEDANCE: 50 Ohms
NOMINAL GAIN: 1.5 dBi @2.3-2.8 GHz, 0.5 dBi @4.9-5.9 GHz
MAX POWER: 25 WATTS
VSWR(MAX) < 1.8:1
2. ALL MATERIALS SHALL BE ROHS COMPLIANT.
3. PARTS SHALL BE PACKAGED TO PREVENT DAMAGE IN SHIPMENT AND HANDLING.
4. DIMENSIONS IN PARANTHESIS ARE FOR REFERENCE ONLY AND NO TOLERANCE IS IMPLIED.

REVISION HISTORY			
REV	DESCRIPTION	DATE	APPROVED
A	OUTLINE DIMENSIONAL DRAWING RELEASED	04JUN15	FXG



UNLESS OTHERWISE SPECIFIED DUAL DIMENSIONING XX.Xin [XX.Xmm]		DRAWN IP	DATE 6/4/2015
FOR TOLERANCES NOT SPECIFIED USE: X.X in ± .1 in, X.XX in ± .01 in, X.XXX in ± .005 in [X mm ± 3 mm], [X.X mm ± .3 mm], [X.XX mm ± .13 mm] ANGULAR ± 1°, FRACTIONAL ± 1/64		CHECKED	DATE
THIRD ANGLE PROJECTION 		MATERIAL: SEE COMP. PRINTS	DATE
		FINISH: SEE COMP. PRINTS	
PCTEL PROPRIETARY DATA THE INFORMATION AND/OR DRAWINGS CONTAINED IN THIS DOCUMENT IS CONFIDENTIAL AND PROPRIETARY TO PCTEL, INC. AND MAY NOT BE USED, REPRODUCED, IN WHOLE OR IN PART, OR MODIFIED IN ANY WAY WITHOUT THE EXPRESS WRITTEN PERMISSION OF AN AUTHORIZED REPRESENTATIVE OF PCTEL, INC.			
		 PCTEL, INC. 471 BRIGHTON DRIVE BLOOMINGDALE, IL 60108 PH. 630-372-6800 FAX. 630-372-8077	
		DESCRIPTION ASSEMBLY, 2-ELEMENT WIFI, SFF, WHITE, 17FT RG58 DBL SHIELD, RPSMA	
		DRAWING NO. ODD_PCTHPMIMO-2-SF	
SIZE B	SCALE 1/2	SHEET 1 OF 1	