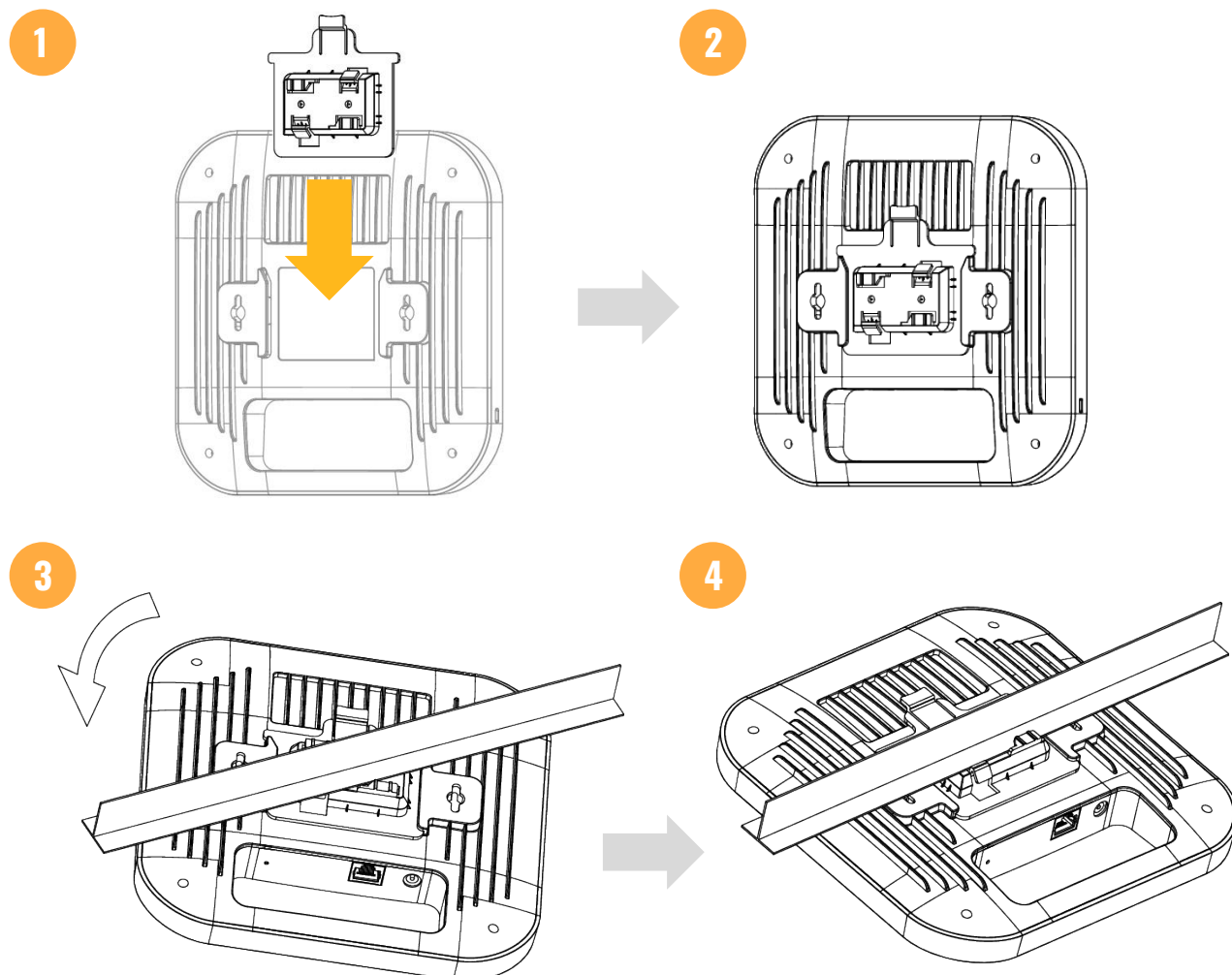
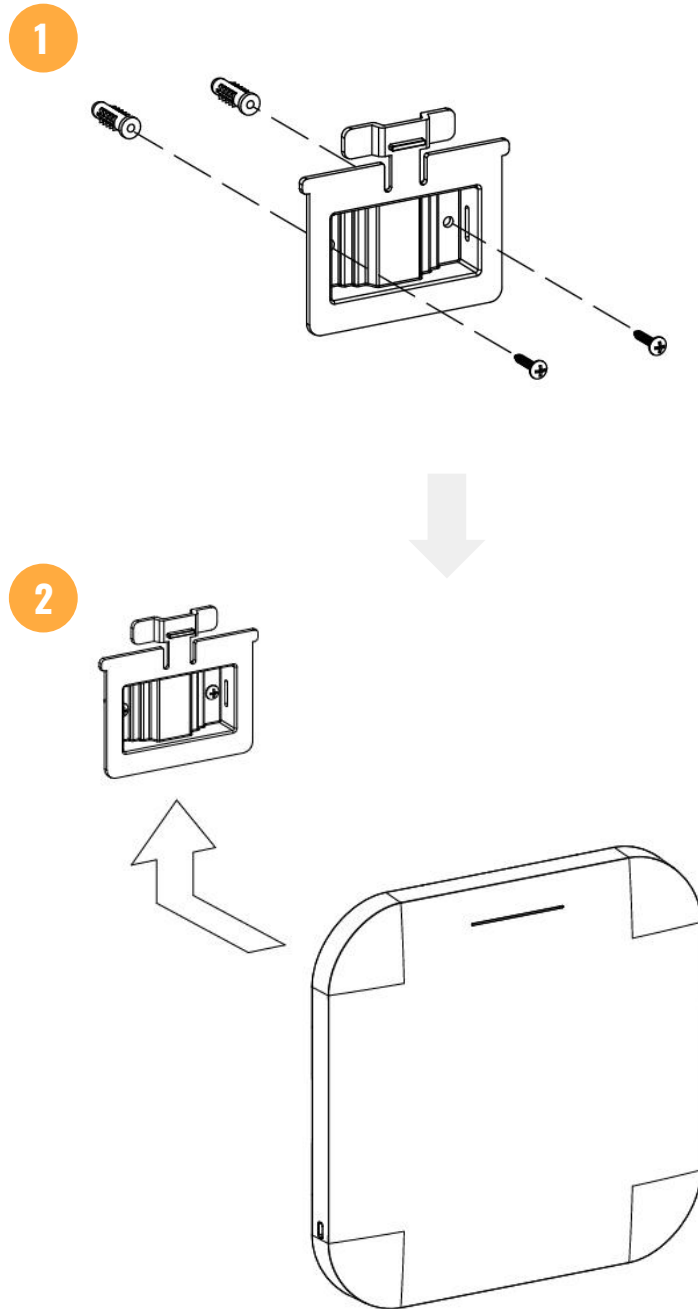


**Ceiling Mount****Steps:**

1. Slide the ceiling mount base into the slot on the back of the access point.
2. Position the T-Rail on the ceiling mount base as shown in image 3.
3. Secure the device by ensuring that the ceiling mount base is hooked onto the T-Rail.

**Wall Mount****Steps:**

1. Determine where the access point is to be placed and mark the location for the two mounting holes.
2. Use the appropriate drill bit to drill two 8.1mm diameter and 26mm deep holes at the markings and hammer the anchors into the openings.
3. Screw the anchors into the holes until they are flush with the wall. Position the mounting bracket over the anchors and secure it to the wall by screwing the included screws into the anchors.
4. Place the access point against the wall and slide it onto the mounting bracket.