



# The Bolton Technical Blade

## 5G Cellular Vehicular Antenna

**BOLTON** |   
TECHNICAL**BT151885**

### The Blade is a high-performing, commercial-grade, 5G-capable cellular vehicular antenna

- Quiet & Aerodynamic High-Gain Antenna for Vehicles
- Heavy-Duty & Weatherproof Construction
- 3/8 x 24 Threaded Base for Versatile Mounting Options
- Quick Disconnect Coax Cable
- Works with ALL vehicle signal boosters



#### ELECTRICAL STUFF

Product Specifications may change without prior notice.

Item No.	BT151885								
Frequency Range	MHz	600	698-806	806-960	1710-1880	1850-1990	1910-2170	2300-2700	3600-3750
Typical Gain	dBi	-6.4	2.7	2.1	4.4	2.7	2.4	3.9	2.3
Max Gain	dBi	4.4							
Input Impedance	Ohm	50							
Polarization Type	Vertical								
Max Power	W	15							

#### MECHANICAL STUFF

Connector Type	SMA Male/FME Female		
Antenna Length	mm, in	597 mm, 23.5" in	
Weight	2 lbs		
Pigtail Coax Cable Length	mm, ft	38 mm, 1.5" to termination	
Quick-Connect Coax Cable Type	RG-58 (88240)		(SMA Female - FME Female Adapter)
4M/13ft Coax Cable Extension	LMR®200 Type	SMA Male/SMA Male	
Radome Material:	Tinned Copper/High Rigidity ABS		
Radome Color	UV Resistant Black		
Warranty Term	2 Year Manufacturers Warranty		
Assembled in the USA	Yes		

**QUESTIONS? CALL US TODAY**  
888-987-2658 [sales@boltontech.com](mailto:sales@boltontech.com)  
 [www.boltontech.com](http://www.boltontech.com) 5010 Wright Road, Suite 115  
Stafford, TX, 77477

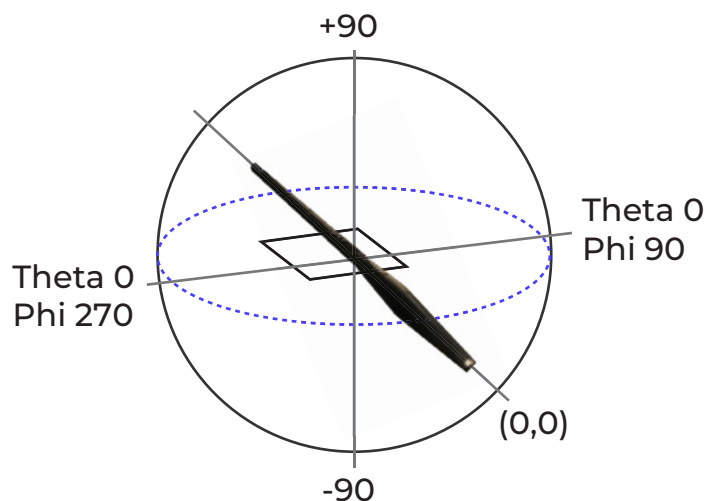


# The Bolton Technical Blade

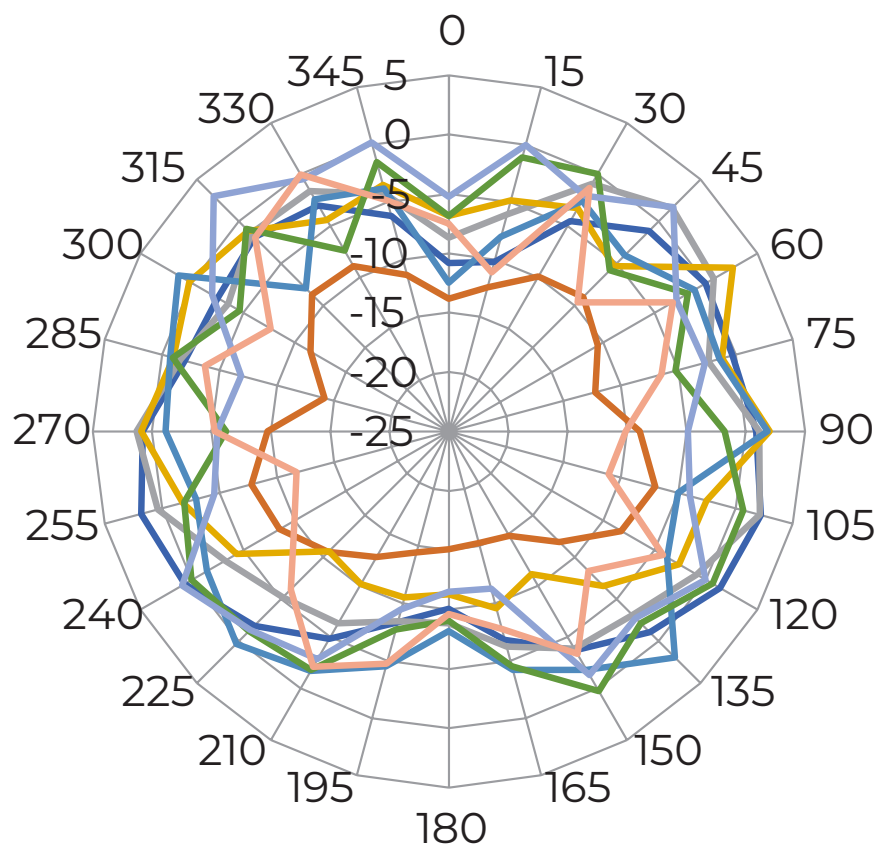
## 5G Cellular Vehicular Antenna

**BOLTON** |   
TECHNICAL

BT151885



### RADIATION PATTERNS, 600-1700 MHz



## BLUE

- 600 MHz
- 700 MHz
- 850 MHz
- 1700 MHz
- 1900 MHz
- 2100 MHz
- 2500 MHz
- 3700 MHz



QUESTIONS? CALL US TODAY  
888-987-2658

✉ [sales@boltontech.com](mailto:sales@boltontech.com)  
🌐 [www.boltontech.com](http://www.boltontech.com)

📍 5010 Wright Road, Suite 115  
Stafford, TX, 77477



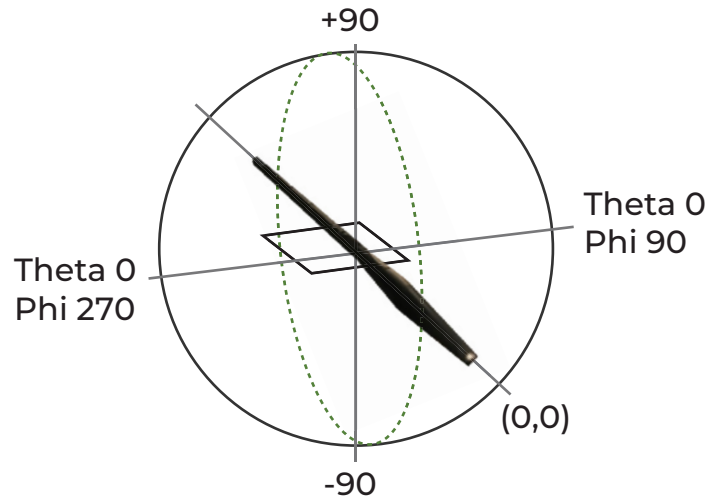


# The Bolton Technical Blade

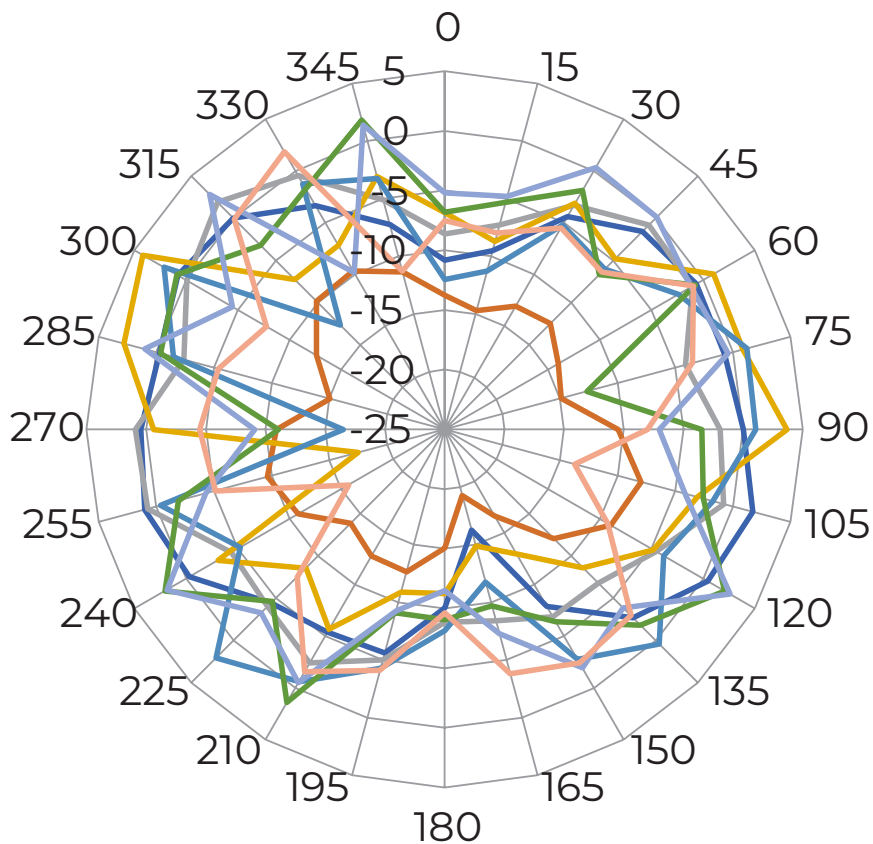
## 5G Cellular Vehicular Antenna

**BOLTON** |   
TECHNICAL

BT151885



### RADIATION PATTERNS, 600-1700 MHz



### GREEN

- 600 MHz
- 700 MHz
- 850 MHz
- 1700 MHz
- 1900 MHz
- 2100 MHz
- 2500 MHz
- 3700 MHz



QUESTIONS? CALL US TODAY  
888-987-2658

✉ [sales@boltontech.com](mailto:sales@boltontech.com)  
🌐 [www.boltontech.com](http://www.boltontech.com)

📍 5010 Wright Road, Suite 115  
Stafford, TX, 77477



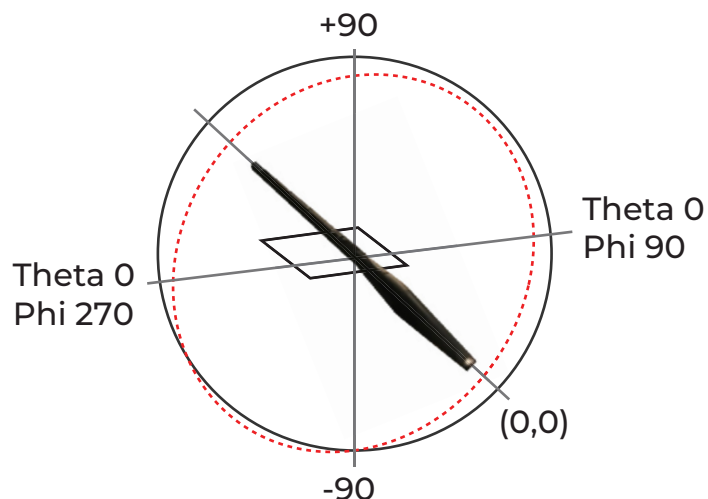


# The Bolton Technical Blade

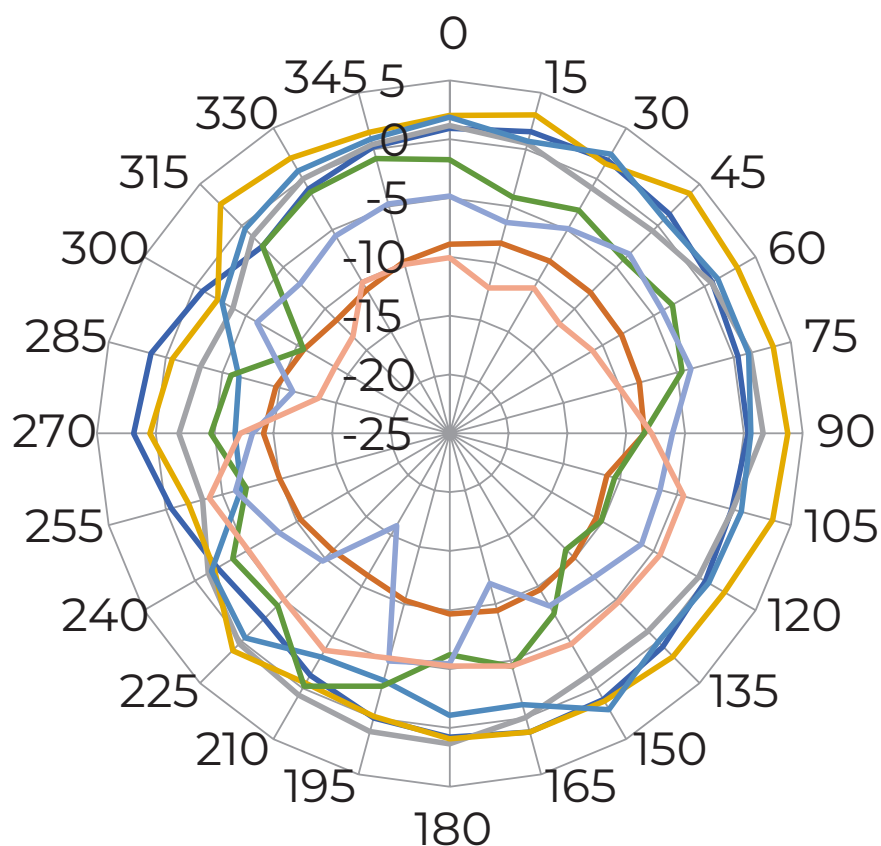
## 5G Cellular Vehicular Antenna

**BOLTON** |   
TECHNICAL

BT151885



### RADIATION PATTERNS, 600-1700 MHz



**RED**

- 600 MHz
- 700 MHz
- 850 MHz
- 1700 MHz
- 1900 MHz
- 2100 MHz
- 2500 MHz
- 3700 MHz



QUESTIONS? CALL US TODAY  
888-987-2658

✉ sales@boltontech.com  
🌐 www.boltontech.com

📍 5010 Wright Road, Suite 115  
Stafford, TX, 77477





# The Bolton Technical Blade

## 5G Cellular Vehicular Antenna

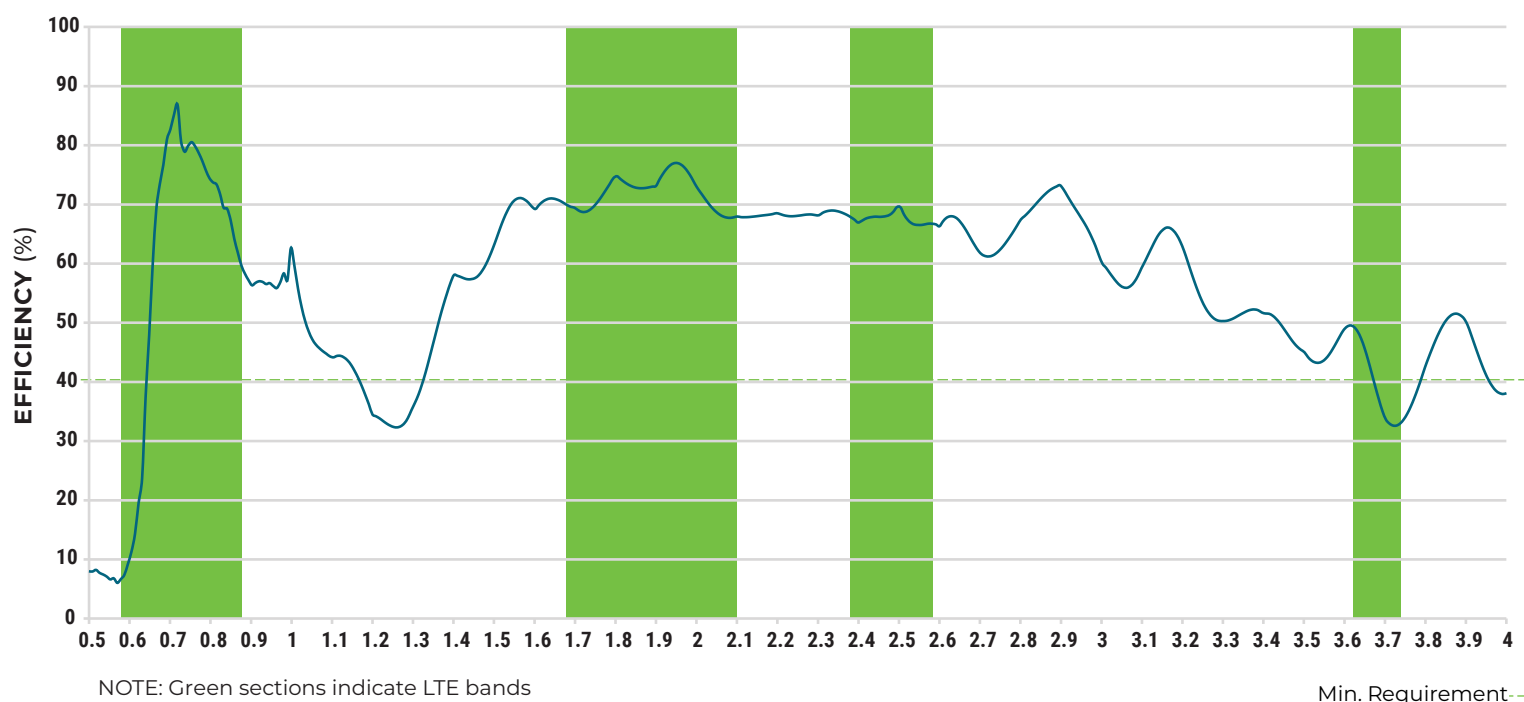
**BOLTON**  
TECHNICAL

BT151885

### FREQUENCY (GHz)

Product Specifications may change without prior notice.

Frequency MHz	600	700	850	1700	1900	2100	2500	3700
Efficiency	9.2%	82.7%	67.3%	69.5%	73.1%	68.0%	69.5%	33.6%



QUESTIONS? CALL US TODAY  
888-987-2658

✉ sales@boltontechnical.com  
🌐 www.boltontechnical.com

📍 5010 Wright Road, Suite 115  
Stafford, TX, 77477



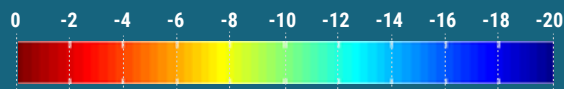
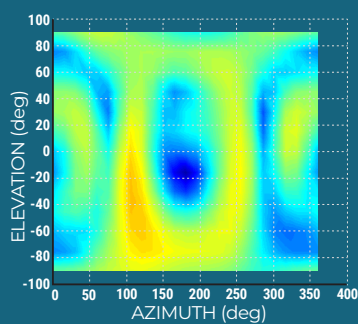
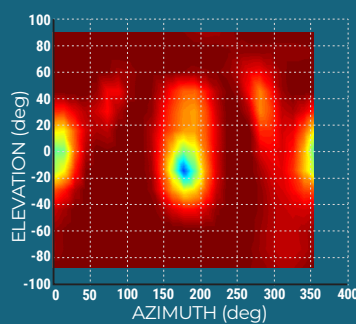
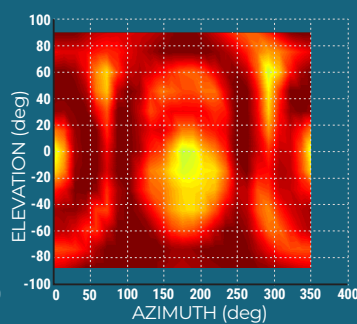
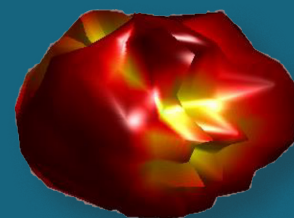
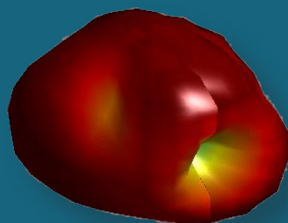
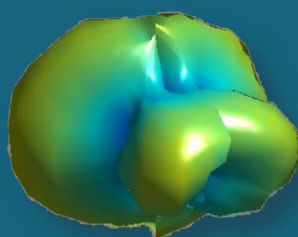
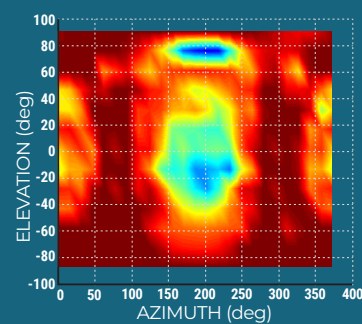


# The Bolton Technical Blade

## 5G Cellular Vehicular Antenna

**BOLTON** TECHNICAL **BT151885****HEAT MAP & 3D SPHERICAL**

Product Specifications may change without prior notice.

**600 MHz****700 MHz****850 MHz****1.7 GHz**

QUESTIONS? CALL US TODAY  
888-987-2658

✉ [sales@boltontech.com](mailto:sales@boltontech.com)  
🌐 [www.boltontech.com](http://www.boltontech.com)

📍 5010 Wright Road, Suite 115  
Stafford, TX, 77477



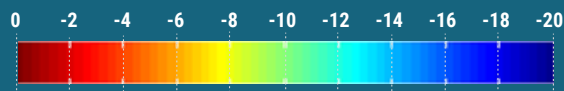
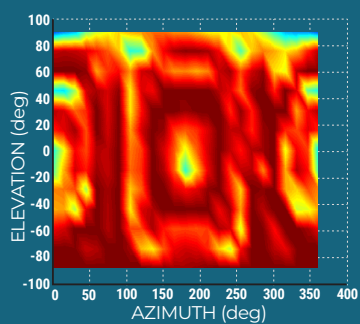
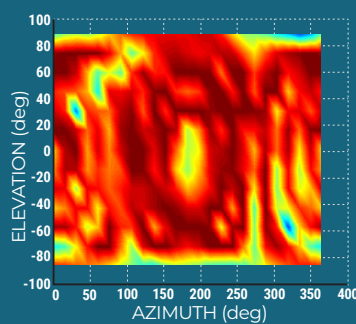
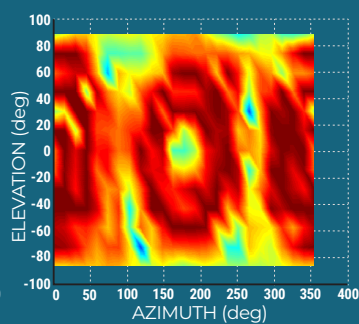
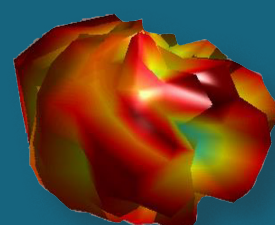
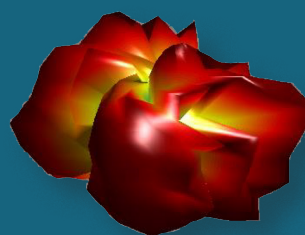
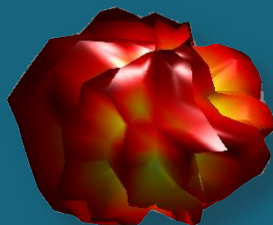
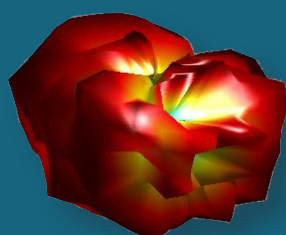
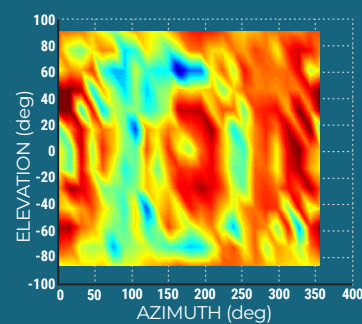


# The Bolton Technical Blade

## 5G Cellular Vehicular Antenna

**BOLTON** |   
TECHNICAL**BT151885****HEAT MAP & 3D SPHERICAL**

Product Specifications may change without prior notice.

**1.9 GHz****2.1 GHz****2.5 GHz****3.7 GHz**

QUESTIONS? CALL US TODAY  
888-987-2658

✉ [sales@boltontech.com](mailto:sales@boltontech.com)  
🌐 [www.boltontech.com](http://www.boltontech.com)

📍 5010 Wright Road, Suite 115  
Stafford, TX, 77477

