



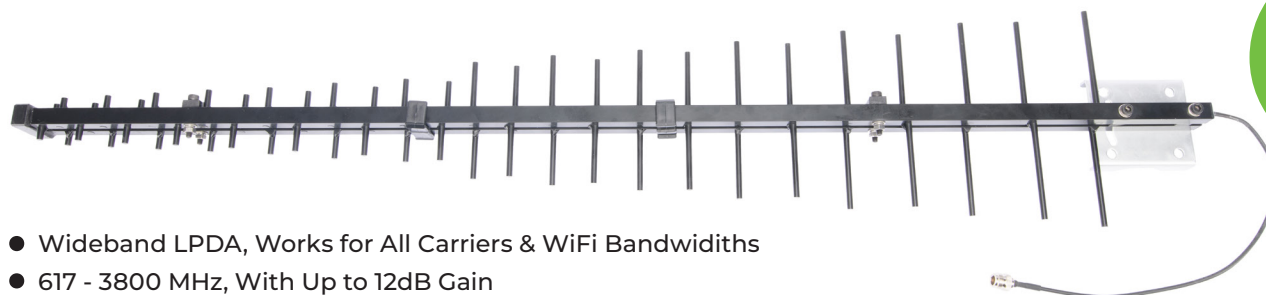
The Arrow 5G

LPDA Cellular Antenna

BOLTON | 
 TECHNICAL

BT151250

Powerful and Easy to Install - Meet The Arrow 5G


5G
 READY

- Wideband LPDA, Works for All Carriers & WiFi Bandwidths
- 617 - 3800 MHz, With Up to 12dB Gain
- Easy installation, designed for 50 Ohm Systems

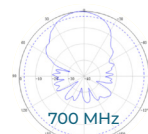
ELECTRICAL STUFF

Product Specifications may change without prior notice.

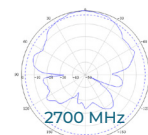
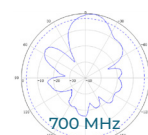
Item No.		BT151250			
Frequency Range		MHz	617-960	1710-2700	3300-3800
Gain		dBi	10	11	12
Polarization		Vertical			
Beam Width	Horizontal	deg	56		
	Vertical		49		
VSWR			$\leq 2.5 / \leq 2.0 / \leq 2.0$		
Front-To-Back Ratio		dB	20		
Input Power, Maximum		watt	25w		
Impedance		Ohm	50		
Lightning Protection			DC Ground		

RADIATION PATTERNS

HORIZONTAL



VERTICAL



MECHANICAL STUFF

Connector Type		N Female or 4.3-10 Female
Size H x W x D	mm, in	1380 x 240 x 92, 54 x 9.4 x 3.6
Weight, without Mounting Kit	kg, lb	Ø1.8, Ø2.0
Mounting Hardware	mm, in	38 ~ 60, 1.5 ~ 2.3
Reflector Finish		Aluminum
Radome Material		Aluminum



QUESTIONS? CALL US TODAY
 888-987-2658

✉ sales@boltontech.com
 🌐 www.boltontech.com

📍 5010 Wright Road, Suite 115
 Stafford, TX, 77477

