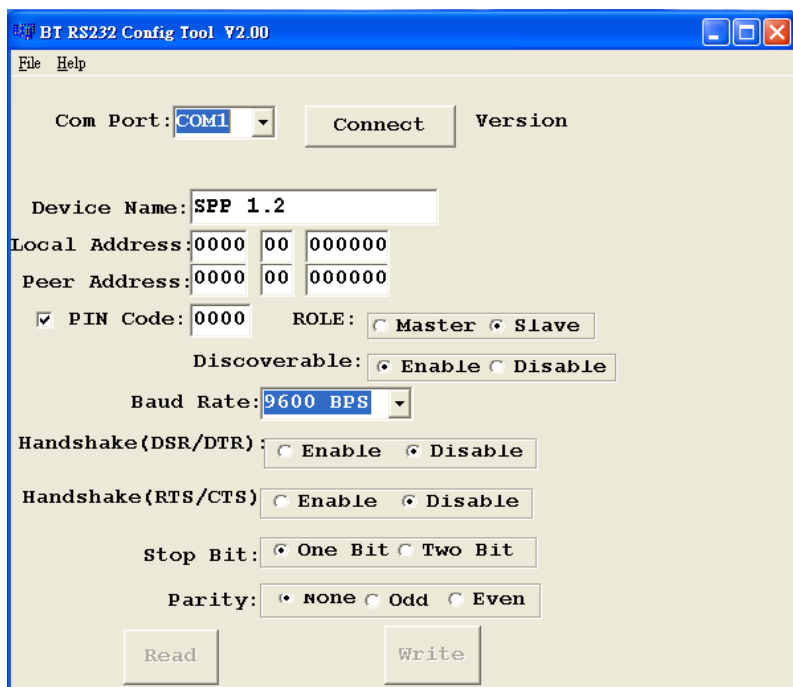


# **BTS-1000A**

Bluetooth to RS-232 Converter  
**Quick Installation Guide**



**Antaira Technologies, LLC**  
Website: <http://www.antaira.com>  
eMail: [info@antaira.com](mailto:info@antaira.com)



1. Plug power adapter to the converter and connect to PC's COM1 port (COM port Selectable).
2. Run the BT1 program (BT RS232 Config Tool V1.00).
3. Click the **Connect** button on the BT RS232 Tool program and with a needle or paperclip, press the side button located on the Bluetooth converter to get into setup mode.
4. When the **Read** button turns visible, it is in setup mode.
5. Click the **Read** button. You can read the converter default parameters.

6. Change the parameter information then click the **Write** button on the BT RS232 Tool program. You can save the parameters to Bluetooth converter.
7. Turn off the power, close the BT RS232 Tool program, and power on the converter again. If pairing is established (the green LED will stay lit), the Bluetooth converter is now in transmit data mode.
8. In transmit data mode, the red and green light will continuously light.

### **DSUB-9 PIN definition**

Pin 1> NC

Pin 2> TXD (data output)

Pin 3> RXD (data input)

Pin 4> DSR (data input)

Pin 5> GND

Pin 6> DTR (data output)

Pin 7> CTS (data input)

Pin 8> RTS (data output)

Pin 9> DC 5v power (in)

**Default Value: 9600,N,8,1**

**Remark: RX / TX has been CROSSED OVER**

**PIN code: 1234**