

AOA-2410

2.4~2.5GHz Omni Antenna 10dBi

AOA-2410 antennas are professionally engineered and manufactured with the highest industry quality at the lowest possible price providing extreme value.

AOA-2410 is designed for the 2.4GHz ISM band, supporting 2.4 to 2.483 GHz and provides superb performance in IEEE 802.11b/g WiFi and Bluetooth applications.

AOA-2410 includes mounting bracket and hardware for up to 2" masts. Made with fiberglass and comes with an integrated N Female

Applications:

2.4 - 2.5 GHz ISM Band
IEEE 802.11b, 802.11g, 802.11n Wireless LAN
Directional and multipoint applications
Bluetooth
Public Wireless Hotspot
WiFi, RFID
Wireless Video Systems

Features :

Superior performance
Light weight
All weather operation
DC Short lightning protection
Installed for vertical
Includes tilt and swivel mast mount
In accordance with customer needs to change the color or features

Model	AOA-2410
Frequency	2.4-2.5GHz
VSWR	≤ 1.5
Gain	10dBi
Polarization	Vertical
Power Handling	50 Watts
Impedance	50 Ω
Beam Width	H: 360° / V: 10°
Connector	N Female
Operation Temp	-40°C ~ +80°C
Dimension	900*68 mm
Mounting	32 ~ 45 mm (1.2 ~1.75 inch)
Weight	600g

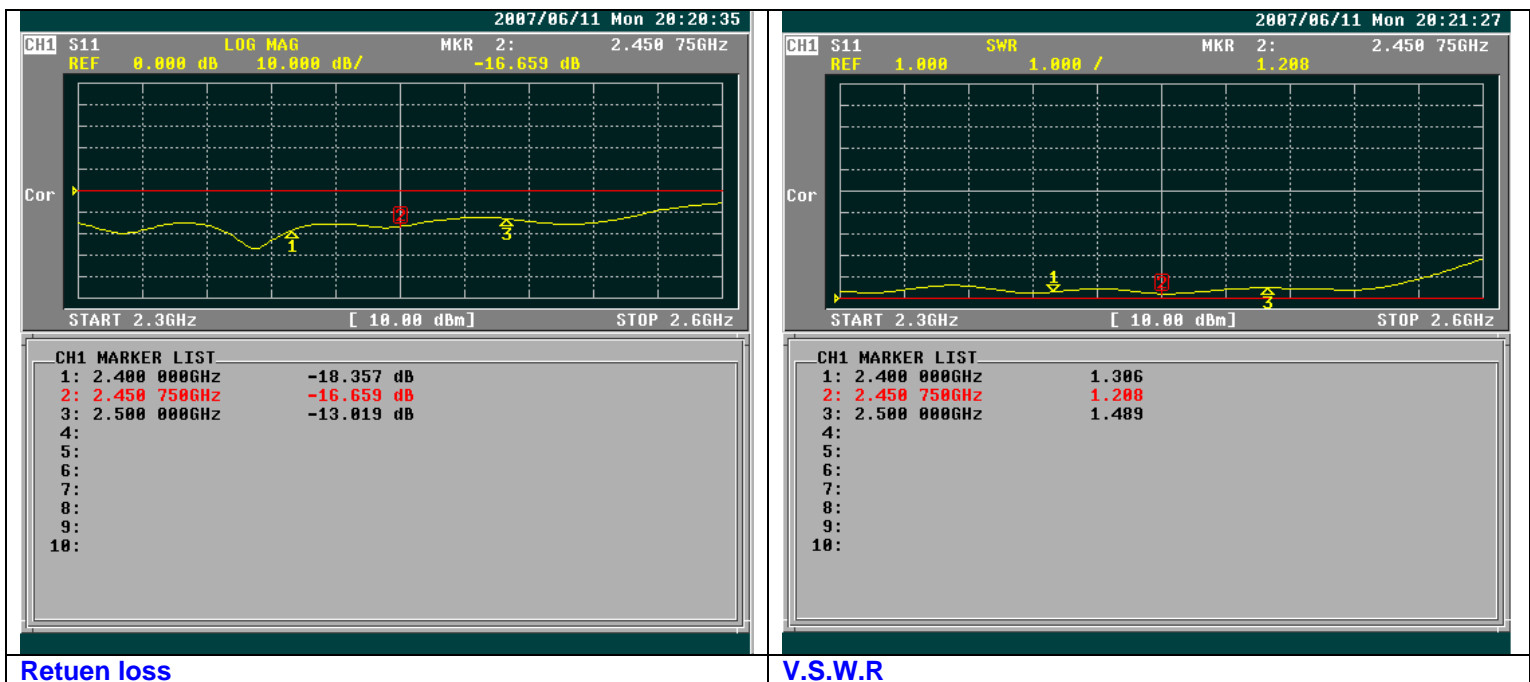
For further details:

Alfa Network Inc.,
4F-1 No. 106, Rueiguang Rd.,
Neihu District,
Taipei City, Taiwan.
<http://www.alfa.com.tw>
sales@alfa.com.tw
Tel:+886-2-27968477
Fax:+886-2-27968478

AOA-2410

2.4~2.5GHz Omni Antenna 10dBi

Network Analyzer Test Report

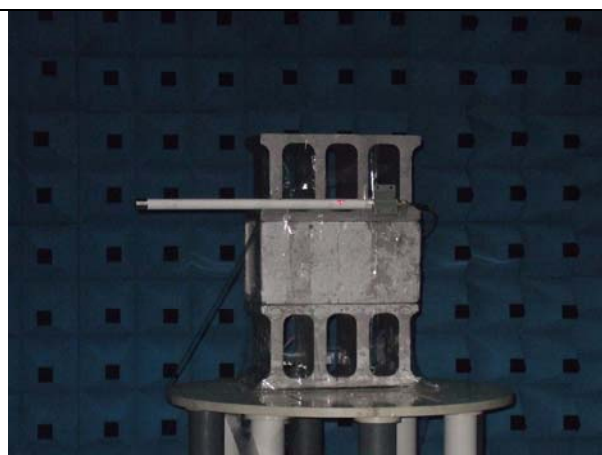


AOA-2410

2.4~2.5GHz Omni Antenna 10dBi

RF Chamber Test Report

Frequency: 2.4 ~ 2.5GHz



Vertical Pattern Photos

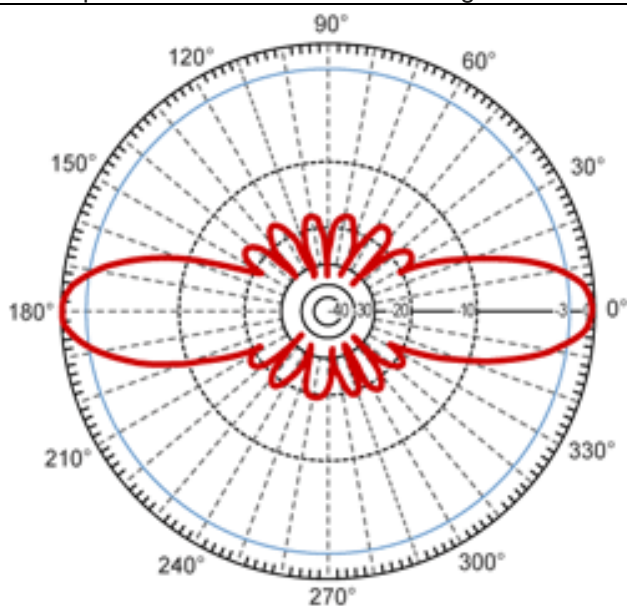


Horizontal Pattern Photos

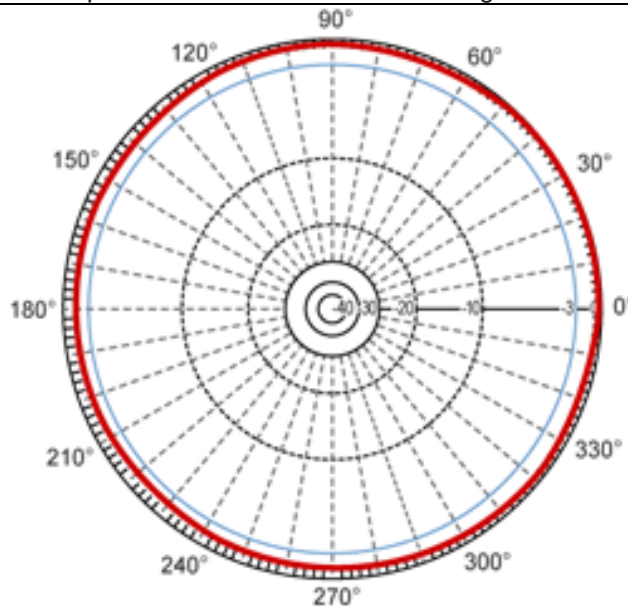
Frequency: 2.4-2.5GHz

E-plane co-pol ----- 3-dB beam-with=10 Deg

H-plane co-pol ----- 3-dB beam-with=360 Deg



Vertical Pattern

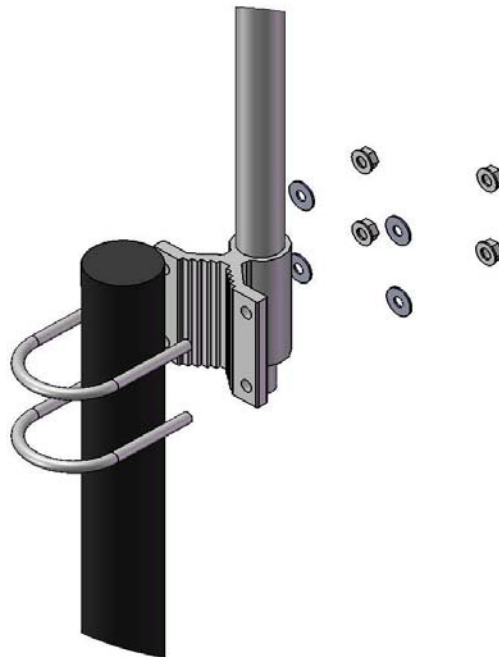
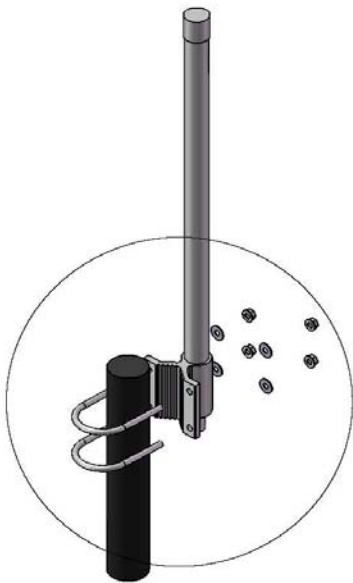


Horizontal Pattern

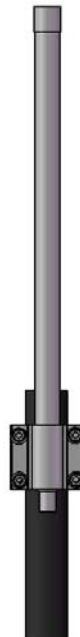
AOA-2410

2.4~2.5GHz Omni Antenna 10dBi

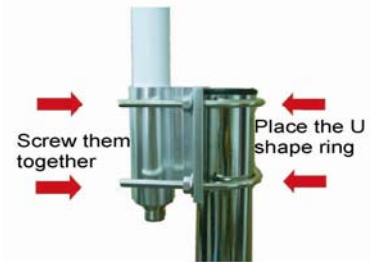
Mounting Kits Install Guide



2 : 5



1.



2.



3.

Finish

