



CENTURION™ 4G

Up to 9-in-1 High Performance IP67 Antenna

A rugged outdoor antenna, CENTURION 4G is designed to provide high performance connectivity for Fleet and Public Safety vehicles and assets. Equipped with up to 9 ports, this antenna connects to virtually any vehicular router or modem.

FEATURES

- Powerful MIMO technology
- Up to 4 x LTE elements
- Up to 4 x Wi-Fi 6 (2.4 & 5-6 GHz) elements
- Optional GNSS element
- IP67 ingress protection
- Available in black or white

ADVANTAGES

- Omni-directional radiation pattern provides uniform coverage
- Compatible with customized EZConnect™ cable harness from a USA factory ensuring fast turnaround
- 5 year limited warranty included¹
- Covered by one or more patents and pending applications²

¹See terms and conditions at <https://airgain.com/antenna-plus-support/>

²For a list of the patents covering this product please visit <https://airgain.com/product-support/patents/>

COMMON PART NUMBERS (inquire to Airgain for other configurations)

CONFIGURATION	CELLULAR ELEMENTS	Wi-Fi ELEMENTS	GNSS	PART NUMBER <small>*Requires EZConnect Cable Harness</small>	DESCRIPTION
9-in-1	4	4	Yes	*AP-CT4G-C4W4G-[x]-B1	EZConnect Antenna with MIMO Cell/LTE x 4, Wi-Fi x 4 & GNSS, Black with 1 foot coax
				[z]-C4W4G-1-2-1-14	EZConnect Cable Harness with MIMO/Cell x 4, Wi-Fi x 4, GNSS, SMA on Cell & GNSS, RP-SMA on Wi-Fi, 14 feet length
				AP-C4W4G-[x]-SMA-RP5678-BL	MIMO Cell/LTE x 4, Wi-Fi x 4 & GNSS, SMA on Cell/LTE & GNSS, RP-SMA on Wi-Fi, Black, 15ft coax
7-in-1	4	2	Yes	*AP-CT4G-C4W2G-[x]-B1	EZConnect Antenna with MIMO Cell/LTE x 4, Wi-Fi x 2 & GNSS, Black, 1 foot coax
				[z]-C4W2G-1-2-1-14	EZConnect Cable Harness with MIMO/Cell x 4, Wi-Fi x 2, GNSS, SMA on Cell & GNSS, RP-SMA on Wi-Fi, 14 feet length
				AP-C4W2G-[x]-SMA-RP56-BL	MIMO Cell/LTE x 4, Wi-Fi x 2 & GNSS, SMA on Cell/LTE & GNSS, RP-SMA on Wi-Fi, Black, 15ft coax
7-in-1	2	4	Yes	*AP-CT4G-C2W4G-[x]-B1	EZConnect Antenna with MIMO Cell/LTE x 2, Wi-Fi x 4 & GNSS, Black, 1 foot coax
				[z]-C2W4G-1-2-1-14	EZConnect Cable Harness with MIMO/Cell x 2, Wi-Fi x 4, GNSS, SMA on Cell & GNSS, RP-SMA on Wi-Fi, 14 feet length
				AP-C2W4G-[x]-SMA-RP3456-BL	MIMO Cell/LTE x 2, Wi-Fi x 4 & GNSS, SMA on Cell/LTE & GNSS, RP-SMA on Wi-Fi, Black, 15ft coax
5-in-1	0	4	Yes	*AP-CT4G-W4G-[x]-B1	EZConnect Antenna with Wi-Fi x 4 and GNSS, Black, 1 foot coax
				[z]-W4G-2-1-14	EZConnect Cable Harness with Wi-Fi, GNSS, RP-SMA on Wi-Fi, SMA on GNSS, 14 feet length
				AP-W4G-[x]-SMA-RP1234-BL	Wi-Fi x 4 and GNSS, RP-SMA on Wi-Fi, SMA on GNSS, Black, 15ft coax
4-in-1	0	4	No	*AP-CT4G-W4-[x]-B1	EZConnect Antenna with Wi-Fi x 4, Black, 1 foot coax
				[z]-W4-2-14	EZConnect Cable Harness with Wi-Fi x 4, RP-SMA on Wi-Fi, 14 feet length
				AP-W4-[x]-SMA-RP-BL	Wi-Fi x 4, RP-SMA on Wi-Fi, Black, 15ft coax

MOUNTING OPTIONS [x] (Must be mounted on metal)	DESCRIPTION
Q	Threaded Bolt Mount
QR	Threaded Bolt Mount with Modified Gasket for 2020 Ford Explorer
A	Adhesive Mount
AR	Adhesive Mount with Modified Gasket for 2020 Ford Explorer
M	Magnetic Mount
EZConnect CABLE HARNESS [z]	DESCRIPTION
CH	Inquire to distributor for select SKUs
CCH	Custom Cable Harness with cable lengths up to 34 feet, and other variations

Also available in color white. For mounting instructions please visit <https://www.airgain.com/installation-and-removal-guides/>.

TECHNICAL SPECIFICATIONS

Performance results are measured in a test chamber with 1' LMR-100 cables and over a 2'x2' ground plane, results are more reliable than data from software simulations

ELECTRICAL

Frequency Range	Elements 1 up to 4	689-960/1700-2700 MHz
	Elements 5 up to 8	2.4/4.9-6.0 GHz
	Element 9 (optional)	1550~1610 MHz
Operational Bands	Elements 1 up to 4	LTE/Cellular
	Elements 5 up to 8	Wi-Fi
	Element 9 (optional)	GPS L1/GALILEO E1/GLONASS G1/BeiDou B1/QZSS L1
Peak Gain: Isotropic	Elements 1 up to 4	698-960 MHz, 4 dBi
		1710-2700 MHz, 7 dBi
	Elements 5 up to 8	2.4 GHz, 7 dBi
		5.5 GHz, 4 dBi
	Element 9 (optional)	30.50 dBi
Isolation	Elements 1 up to 4	>15 dB
	Elements 5 up to 8	>30 dB
Correlation Co-efficient	Elements 1 up to 4	<0.1

ENVIRONMENTAL

Hazardous Substances	RoHS Compliant
Temperature	-40°C to 65°C (-40°F to + 149°F) Operating and Storage conformance to IEC 60068
Humidity (Non-Condensing)	5% to 96% Operating and Storage conformance to IEC 60068
Water Ingress	IP67
Military Spec	MIL-STD 810 conformance to vibration

MOUNTING

Dimensions	Height	2.27" (57.7mm)
	Width	4.47" (113.6mm)
	Length	7.32" (186mm)
Color	Black (BL) or White (WH)	

CABLE

		STANDARD	EZConnect
Cell	Type	LMR-195 Low Loss	LMR-100 Low Loss
	Diameter	0.195" (4.953mm)	0.110" (2.79mm)
	Length	1 ft (0.3m)	1 ft (0.3m)
	Termination	SMA Male	SMA Male
Wi-Fi	Type	LMR-195 Low Loss	LMR-100 Low Loss
	Diameter	0.195" (4.953mm)	0.110" (2.79mm)
	Length	1 ft (0.3m)	1 ft (0.3m)
	Termination	RP-SMA Male	SMA Female
GNSS	Type	RG-174U	LMR-100 Low Loss
	Diameter	0.100" (2.54mm)	0.110" (2.79mm)
	Length	1 ft (0.3m)	1 ft (0.3m)
	Termination	SMA Male	FME Female

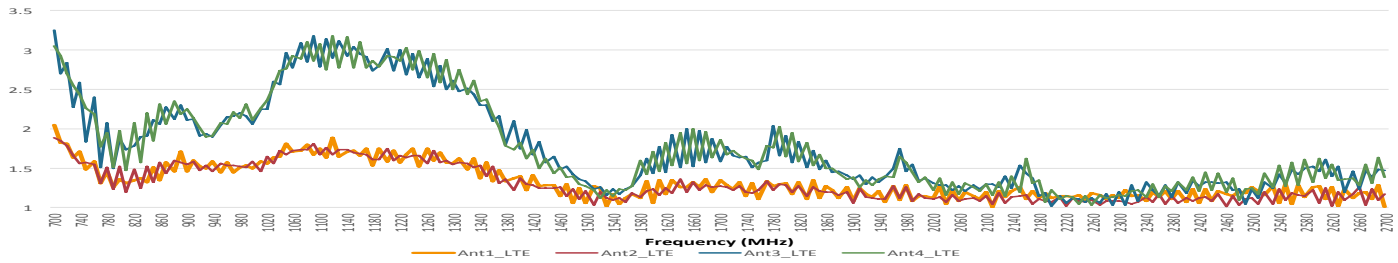
GNSS

Ceramic Patch Antenna Specification	Bandwidth	1561-1603 MHz
	Gain@Zenith	2.5 dBi
	Polarization	R.H.C.P.
	Axial Ratio	3.0 dB Typ.

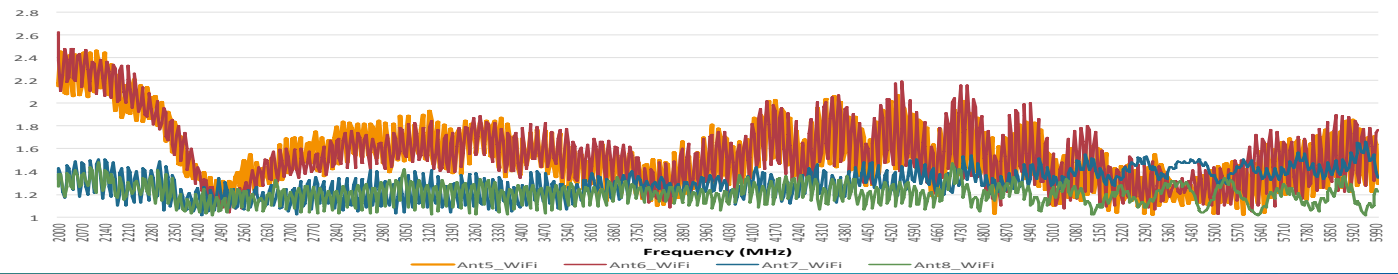
LNA Specification	Noise Figure	1.2 dB
	Gain	28 dBi
	Voltage	3.3V~5.6V
	Current	9.6±1mA@3.3V

Guidance for interpreting the data sheet is available on our website: <https://www.airgain.com/resources/datasheet-term-guide/>

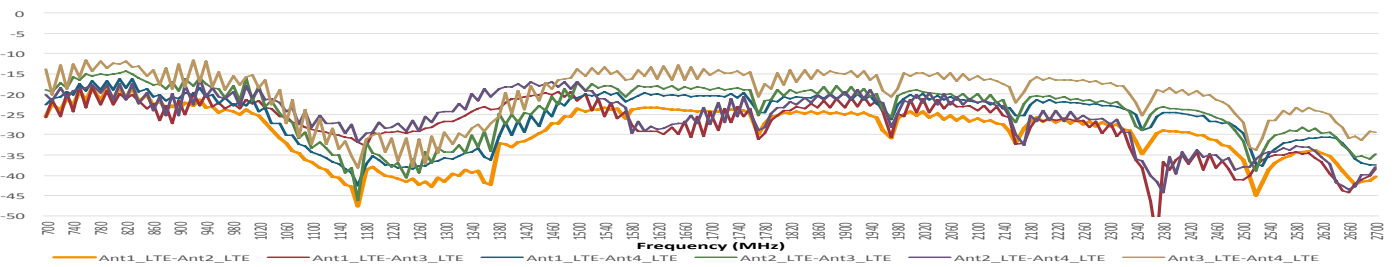
VSWR of LTE Antennas



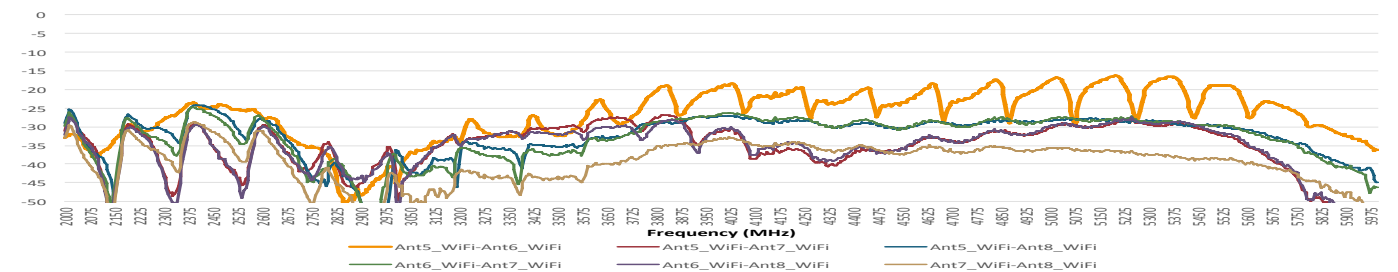
VSWR of Wi-Fi Antennas



Isolation of LTE Antennas



Isolation of Wi-Fi Antennas



VSWR of GNSS Antenna

