



CENTURION™ 5G

Up to 9-in-1 High Performance IP67 Antenna

A rugged outdoor antenna, CENTURION 5G is designed to provide high performance LTE and 5G connectivity for Fleet and Public Safety vehicles and assets. Equipped with up to 9 ports, this antenna connects to virtually any vehicular router or modem.

FEATURES

- Powerful MIMO technology
- Up to 4 x LTE/5G (600 MHz - 6 GHz) elements
- Up to 4 x Wi-Fi 6/6E/7 (2.4 & 5-7.1 GHz) elements
- Optional GNSS element
- IP67 ingress protection
- Available in black or white

ADVANTAGES

- High efficiency provides better performance
- Omni-directional radiation pattern provides uniform coverage
- Compatible with customized EZConnect™ cable harness
- 5 year limited warranty included¹
- Covered by one or more patents and pending applications²

¹See terms and conditions at <https://airgain.com/antenna-plus-support/>

²For a list of the patents covering this product please visit <https://airgain.com/product-support/patents/>

COMMON PART NUMBERS (Inquire to Airgain for other configurations)

CONFIGURATION	CELLULAR ELEMENTS	Wi-Fi ELEMENTS	GNSS	PART NUMBER <small>*Requires EZConnect Cable Harness</small>	DESCRIPTION
9-in-1	4	4	Yes	*AP-CT5G-C4W4G-[x]-B1	EZConnect Antenna with MIMO 5G (600 MHz-6 GHz) x 4, Wi-Fi x 4 & GNSS, Black, 1 foot coax
				[z]-C4W4G-1-2-1-14	EZConnect Cable Harness with MIMO/Cell x 4, Wi-Fi x 4, GNSS, SMA on Cell & GNSS, RP-SMA on Wi-Fi, 14 feet length
				AP-NEXT-C4W4G-[x]-SMA-RP5678-BL-15	MIMO 5G (600 MHz-6 GHz) x 4, Wi-Fi x 4 & GNSS, SMA on Cell/5G & GNSS, RP-SMA on Wi-Fi, Black, 15ft coax
7-in-1	4	2	Yes	*AP-CT5G-C4W2G-[x]-B1	EZConnect Antenna with MIMO 5G (600 MHz-6 GHz) x 4, Wi-Fi x 2 & GNSS, Black, 1 foot coax
				[z]-C4W2G-1-2-1-14	EZConnect Cable Harness with MIMO/Cell x 4, Wi-Fi x 2, GNSS, SMA on Cell & GNSS, RP-SMA on Wi-Fi, 14 feet length
				AP-NEXT-C4W2G-[x]-SMA-RP56-BL-15	MIMO 5G (600 MHz-6 GHz) x 4, Wi-Fi x 2 & GNSS, SMA on Cell/5G & GNSS, RP-SMA on Wi-Fi, Black, 15ft coax
5-in-1	4	0	Yes	*AP-CT5G-C4G-[x]-B1	EZConnect Antenna with MIMO 5G (600 MHz-6 GHz) x 4 & GNSS, Black, 1 foot coax
				[z]-C4-1-14	EZConnect Cable Harness with MIMO/Cell x 4, GNSS, SMA on Cell & GNSS, 14 feet length
				AP-NEXT-C4G-[x]-SMA-BL-15	MIMO 5G (600 MHz-6 GHz) x 4 & GNSS, SMA on Cell/5G & GNSS, Black, 15ft coax
4-in-1	4	0	No	*AP-CT5G-C4-[x]-B1	EZConnect Antenna with MIMO 5G (600 MHz-6 GHz) x 4, Black, 1 foot coax
				[z]-C4-1-14	EZConnect Cable Harness with MIMO/Cell x 4, SMA on Cell, 14 feet length
				AP-NEXT-C4-[x]-SMA-BL-15	MIMO 5G (600 MHz-6 GHz) x 4, SMA on Cell/5G Black, 15ft coax

MOUNTING OPTIONS [x] (Must be mounted on metal)	DESCRIPTION
Q	Threaded Bolt Mount
QR	Threaded Bolt Mount with Modified Gasket for 2020 Ford Explorer
A	Adhesive Mount
AR	Adhesive Mount with Modified Gasket for 2020 Ford Explorer
M	Magnetic Mount
EZConnect CABLE HARNESS [z]	DESCRIPTION
CH	Inquire to distributor for select SKUs
CCH	Custom Cable Harness with cable lengths up to 34 feet, and other variations

Also available in color white. For mounting instructions please visit <https://www.airgain.com/installation-and-removal-guides/>.

TECHNICAL SPECIFICATIONS

Performance results are measured in a test chamber with 1' LMR-100 cables and over a 2'x2' ground plane, results are more reliable than data from software simulations

ELECTRICAL

Frequency Range	Elements 1 up to 4	617-960/1700-2700/3300-4200/5150-5850 MHz
	Elements 5 up to 8	2.4/5.15-7.125 GHz
	Element 9 (optional)	1560~1610 MHz
Operational Bands	Elements 1 up to 4	5G (Band 71, LTE, CBRS, LAA)
	Elements 5 up to 8	Wi-Fi
	Element 9 (optional)	GPS L1/GALILEO E1/GLONASS G1/BeiDou B1/QZSS L1
Peak Gain: Isotropic	Elements 1 up to 4	617-960 MHz, 6.2 dBi
		1700-2700 MHz, 6.6 dBi
		3300-4200 MHz, 9.3 dBi
		5150-5850 MHz, 7.2 dBi
	Elements 5 up to 8	2.4 GHz, 5-7 GHz
		4.8 dBi, 8.3 dBi
	Element 9 (optional)	33.85 dBi
Isolation	Elements 1 up to 4	>7 dB
	Elements 5 up to 8	>22 dB
Average Efficiency	Elements 1 up to 4	617-960 MHz, >48%
		1700-2700 MHz, >50%
		3300-4200 MHz, >53%
		5150-5850 MHz, >58%
	Elements 5 up to 8	2.4 GHz, >40%
		5-7 GHz, >40%
Correlation Co-efficient	Elements 1 up to 4	<0.1

ENVIRONMENTAL

Hazardous Substances	RoHS Compliant
Temperature	-40°C to 70°C (-40°F to + 158°F) Operating, -40°C to 85°C (-40°F to + 185°F) Storage
Humidity (Non-Condensing)	5% to 96% Operating and Storage conformance to IEC 60068
Water Ingress	IP67
Military Spec	MIL-STD 810 conformance to vibration

MOUNTING

Dimensions	Height	3.26" (82.7mm)
	Width	4.47" (113.6mm)
	Length	7.32" (186mm)
Color	Black (BL) or White (WH)	

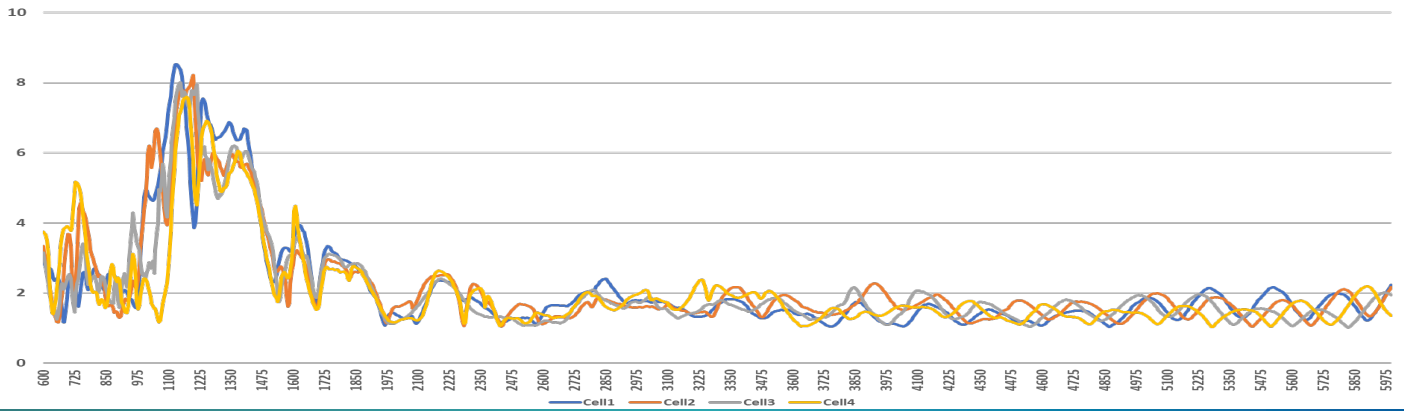
CABLE		STANDARD	EZConnect
Cell	Type	LMR-195 Low Loss	LMR-100 Low Loss
	Diameter	0.195" (4.953mm)	0.110" (2.79mm)
	Length	1 ft (0.3m)	1 ft (0.3m)
	Termination	SMA Male	SMA Male
Wi-Fi	Type	LMR-195 Low Loss	LMR-100 Low Loss
	Diameter	0.195" (4.953mm)	0.110" (2.79mm)
	Length	1 ft (0.3m)	1 ft (0.3m)
	Termination	RP-SMA Male	SMA Female
GNSS	Type	RG-174U	LMR-100 Low Loss
	Diameter	0.100" (2.54mm)	0.110" (2.79mm)
	Length	1 ft (0.3m)	1 ft (0.3m)
	Termination	SMA Male	FME Female

GNSS

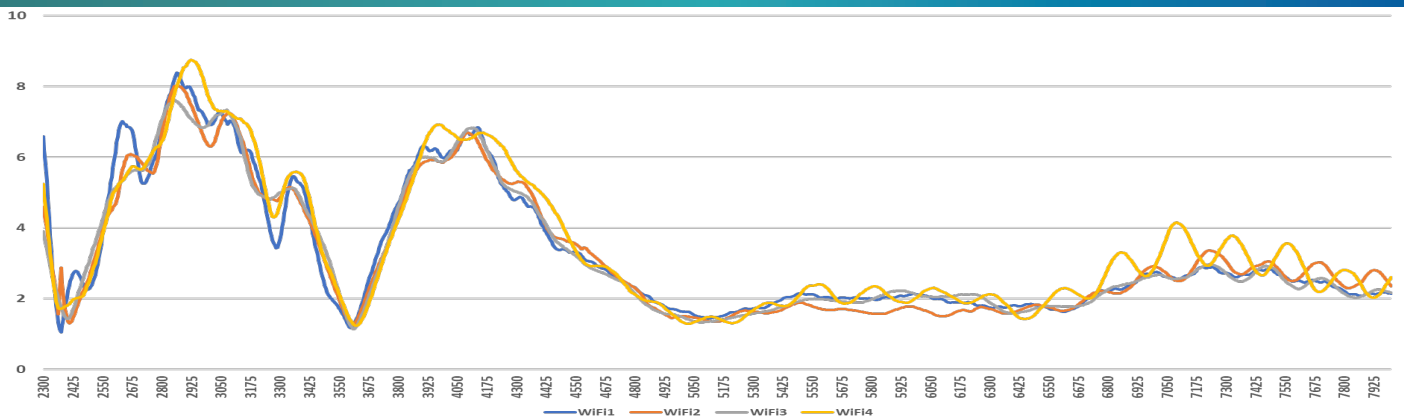
Ceramic Patch Antenna Specification	Bandwidth	1561-1602 MHz
	Gain@Zenith	2.5 dBi
	Polarization	R.H.C.P.
	Axial Ratio	3.0 dB Typ.
LNA Specification	Noise Figure	1.2 dB
	Gain	28 dBi
	Voltage	3.3V~5.6V
	Current	9.6±1mA@3.3V

Guidance for interpreting the data sheet is available on our website: <https://www.airgain.com/resources/datasheet-term-guide/>

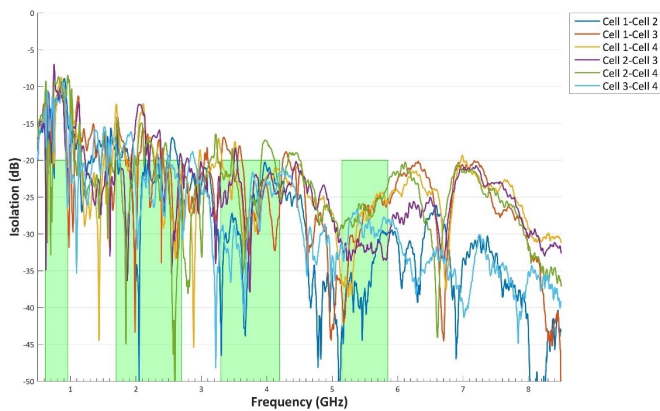
VSWR of 5G Antennas



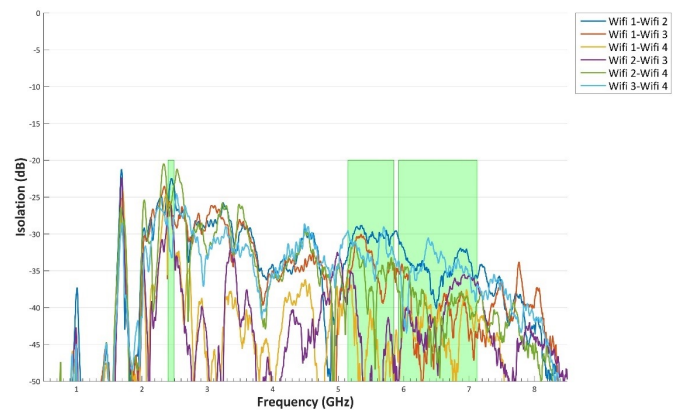
VSWR of Wi-Fi Antennas



Isolation of 5G Antennas



Isolation of Wi-Fi Antennas



VSWR of GNSS Antenna

