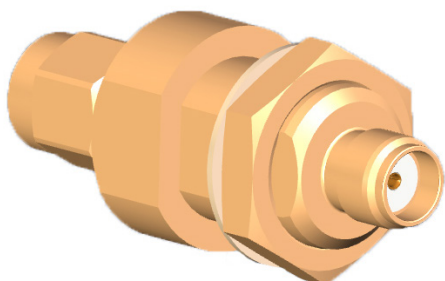


Multi-Strike Surge Arrester

SAMS-SP-SMABJ

PANORAMA ANTENNAS

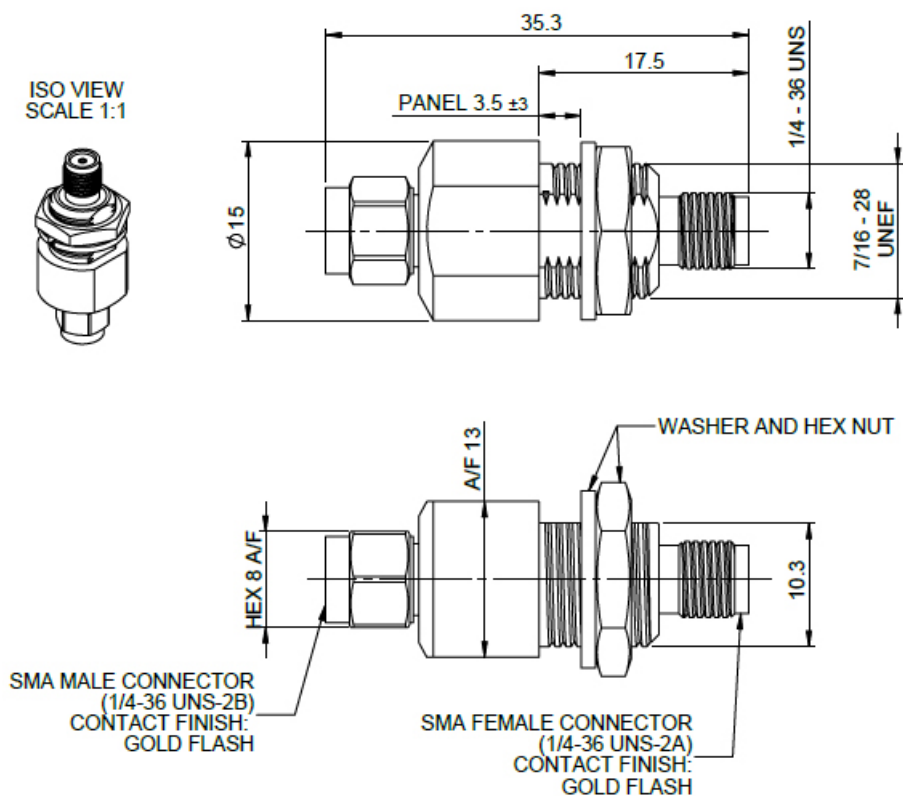


- Coaxial multi-strike surge arrester
- 0-6GHz operation
- SMA (m) to SMA(f)
- Bulkhead type panel mounting

This multi strike surge arrester offers a flexible light duty surge protection solution using SMA connectors allowing it to be mounted in line between antennas and feeder cables or coaxial cables and radio / router devices.

The surge arrester can operate between 0-6GHz with low return and insertion loss. The surge arrester is fitted with a bulkhead feature which can be used to mount and earth the device to conductive earth bars / panels of max 6.5mm (0.25") thickness, alternatively this feature can accept a heavy duty earth tag.

Technical Drawing

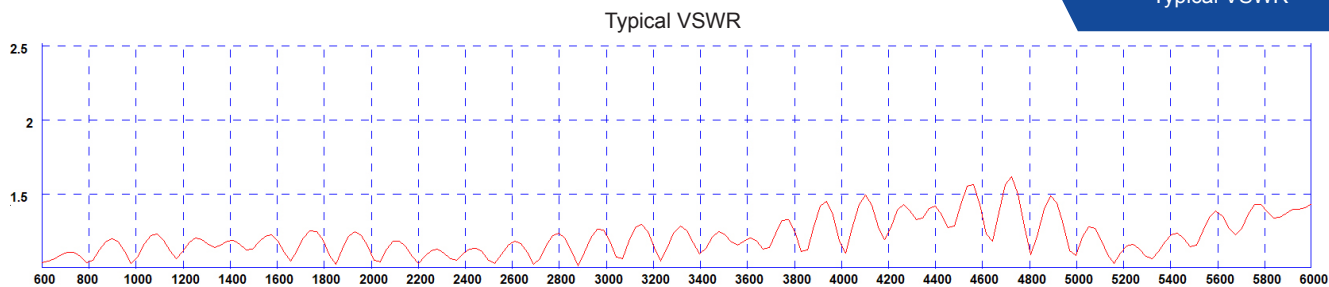


Multi-Strike Surge Arrester

SAMS-SP-SMABJ

PANORAMA ANTENNAS

Typical VSWR



*VSWR measured port to port without additional cable

Product Data

Part No.

SAMS-SP-SMABJ

Electrical Data

Frequency range (Mhz)	0-6GHz
Impedance	50Ω
Typical VSWR	<1.5:1
Breakdown voltage	150-250 V DC (100 V/S)
Impulse discharge current	8/20 μs 5 kA 10 times / 8/20 μs 10 kA 1 time
Residual pulse energy	typ. 400 μJ (4 kV, 1.2/50 μs; 2 kV, 8/20 μs)
Max input power (W)	25

Mechanical Data

Dimensions (mm)	Height	35.3 (1.4")
	Diameter	15 (0.59")
Operating temp (°C)	-40° / +80°C (-40° / 176°F)	
Mounting hole diameter (mm)	11 (0.43") overall [10.3 (0.4") across flat]	
Max panel thickness (mm)	6.5 (0.25")	
Material	Brass / NiP-Au plated	

Terminations

Connector 1	SMA Plug (m)
Connector 2	SMA Jack (f)