



- Combines two TETRA radios on the same antenna
- Combines two antennas on the same radio

When you can only fit one antenna on a vehicle, then this combiner is the solution providing > 26dB isolation over 380-430MHz with an antenna match at 1.2:1 with low insertion loss.

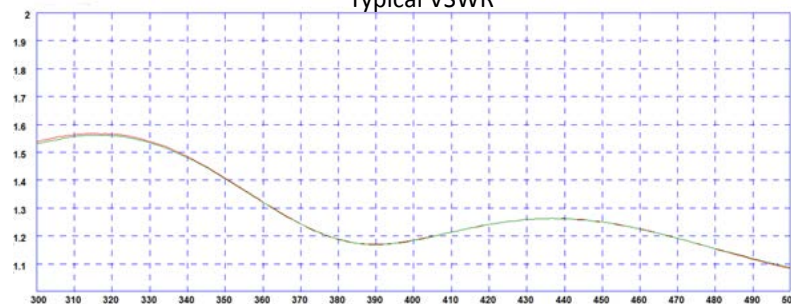
Technical Note:

The isolation provided by this device is dependent on the antenna VSWR. An antenna match of 1.5:1 VSWR will result in a reduction of isolation to 20dB.

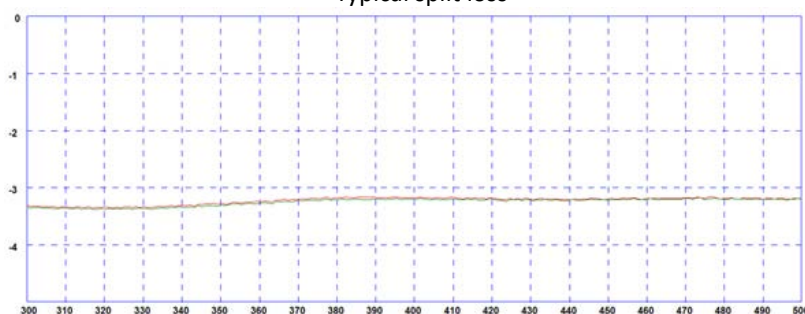
Higher VSWR on the antenna port will result in a further reduction in isolation between the TX ports.

During operation extreme care should be taken to ensure that the VSWR of the antenna connected to the combiner does not exceed 1.5:1.

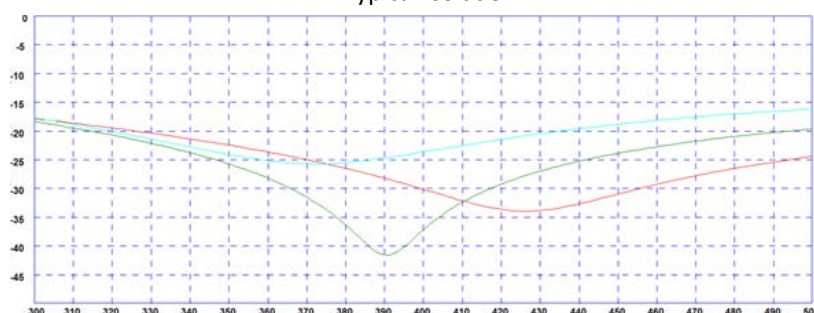
Typical VSWR



Typical split loss



Typical Isolation

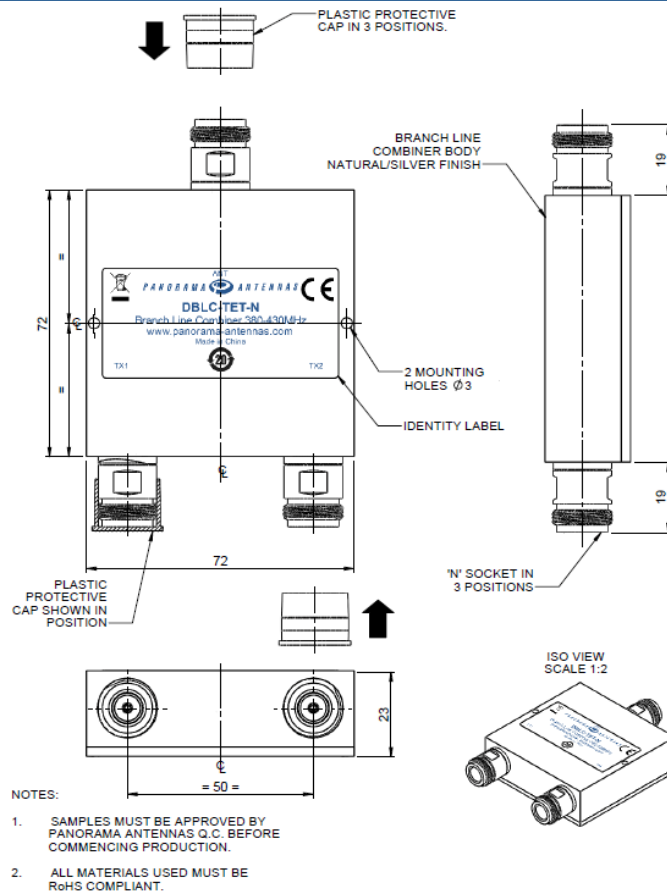


Red Plot – 1:1 load on antenna port

Green Plot – 1.2:1 load on antenna port

Aqua Plot – 1.5:1 load on antenna port

Technical Drawing



Part No

DBLC-TET-N

Electrical Data

| | |
|---------------------------|-------------------------------|
| Frequency Range (MHz) | 380-430 |
| Split Loss | 3dB |
| Insertion Loss | < 0.5dB |
| Isolation TX1 - TX2 | ≥ 26dB |
| | ≥ 26dB |
| | ≥ 20dB |
| Typical VSWR at Tx1 / Tx2 | < 1.5:1 |
| Max input power (W) | 20 per port |
| | VSWR of 1.1:1 at antenna port |
| | VSWR of 1.2:1 at antenna port |
| | VSWR of 1.5:1 at antenna port |
| | VSWR of 1.5:1 at antenna port |

Mechanical Data

| | | |
|---------------------|--------|-------------------------------|
| Dimensions (mm) | Length | 72 (2.83") |
| | Width | 72(2.83") |
| | Height | 23 (0.90") |
| Operating Temp (°C) | | -40° / +80°C (-40° / 176°F) |
| Material | | Aluminium |
| Colour | | Natural / Silver |
| Termination | | N sockets on all ports |

PANORAMA ANTENNAS

Panorama Antennas Ltd
Frogmore, London, SW18 1HF, United Kingdom

T: +44 (0)20 8877 4444
F: +44 (0)20 8877 4477
E: sales@panorama-antennas.com
www.panorama-antennas.com

Waiver: The data given above is indicative of the performance of the product/s under particular conditions and does not imply a guarantee of performance. These specifications are subject to change without notice.

Copyright © Panorama Antennas Ltd. All rights reserved.