

PANORAMA ANTENNAS



Low Profile 4x4 4G/5G MiMo

2x2 MiMo Dual Band WiFi

GPS/GNSS Active Antenna 26dB LNA

The LG-IN2445 range has been designed to provide 4x4 4G/5G MiMo performance from 617-960/1710-6000MHz combined with GPS/GNSS and 2x2 MiMo WiFi 2.4/5.0GHz in a compact low profile housing.

The antenna is designed to be panel mounted and can be fitted on a conductive or non-conductive panel. Supplied with integrated flame retardant RG174 cables (Compliant to UNECE 118.01 and EN45545-2) and a halogen free flame retardant radome the antenna is suitable for many environments and applications. The antenna radome is available in black or white and meets IK10 for vandal resistance and IP69K for ingress protection.

The integrated GPS/GNSS module supports GPS, Glonass, Galileo, QZSS and Compass with 26dB LNA gain. This GPS module features advanced filtering for LTE B13/14 designed to minimise potential in band interference.

LG-IN2445 is supplied as a complete plug and play kit with integrated 5m (16') ultra-low loss TPE extension cables and SMA (m) connectors for 4G/5G and GPS and Rev Pol SMA for WiFi.

IK10

Certified IK10
Impact Resistant

**IP69K
RATED**

Certified IP69K
Ingress Protected



Flame Retardant
Halogen Free
Radome -UL94-V0

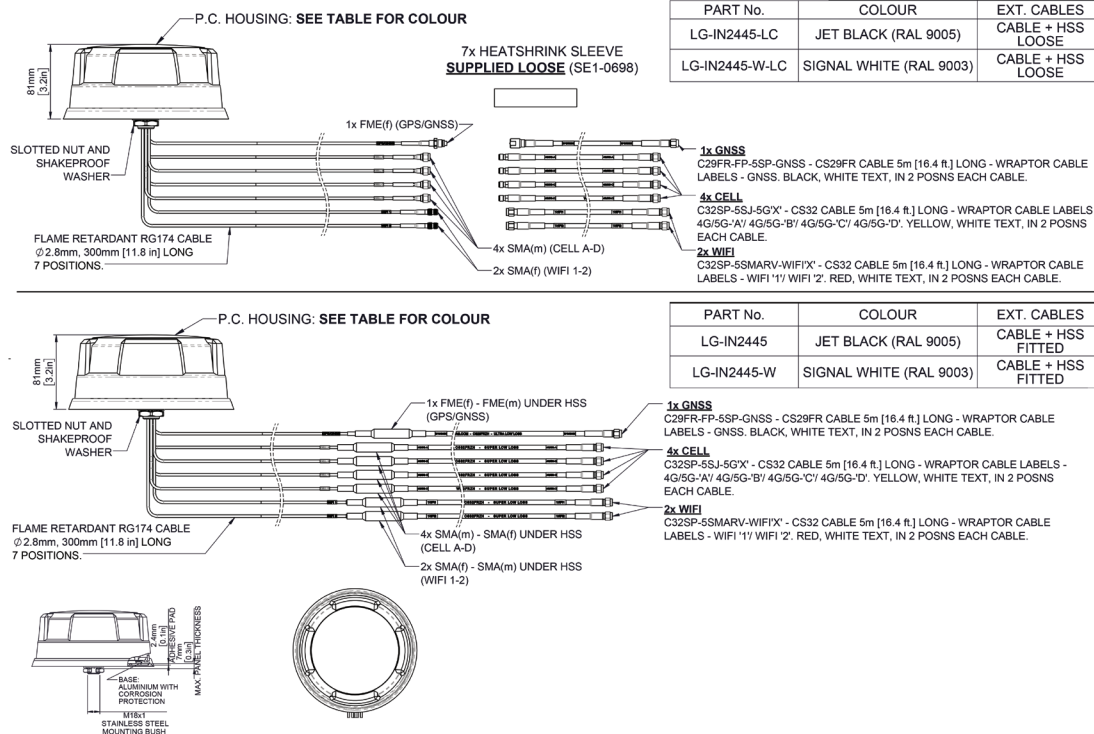


UV, Ozone, High &
Low Temperature
Protected



Environmentally
Compliant - Meets
RoHS, REACH - PVC
Free

Technical Drawing



4x4 MiMo 4G/5G Dome Antenna Kit LG-IN2445

PANORAMA ANTENNAS

Part No.					
		LG-IN2445-W	LG-IN2445-W-LC	LG-IN2445	LG-IN2445-LC
Electrical Data					
Frequency Range (MHz)	4G/5G Elements		4x 617-960 / 1710-6000		
	WiFi Elements		2x 2.4/4.9-6GHz		
Peak Gain: Isotropic : (dBi)†	4G/5G Elements	617-960MHz	4		
		1710-3800MHz	8		
		4900-6000MHz	9		
	WiFi Elements	2.4 GHz	9		
		4.9-6.0GHz	9		
Typical Efficiency **	4G/5G Elements	617-960MHz	>50%		
		1710-3800MHz	>75%		
		4900-6000MHz	>85%		
	WiFi Elements	>70%			
Isolation ***	4G/5G Elements	>10dB			
	Wifi Elements	>12dB			
Correlation Co-efficient	4G/5G Elements	< 0.2			
	WiFi Elements	<0.1			
Nominal Impedance		50Ω			
GPS/GNSS Data					
Frequency Range (MHz)		1562-1612			
VSWR		<2.0:1 ± 4MHz			
Gain: LNA		26dB			
Out of band rejection		>40dB (@ > +/- 100MHz f)			
Typical Noise Figure		-2.7dB			
Notch Filter rejection @787MHz		24dB			
Operating Voltage		3 - 5V DC			
Typcal Current (mA)		15			
Mechanical Data					
Dimensions (mm)	Height	80 (3.1")			
	Diameter	180 (7.1")			
Operating Temp		-40°/ +80°C (-40° / +176°F)			
Colour		White	Black		
Ingress & Impact Protection		IK10 & IP69K			
Mounting Data					
Mounting type		Panel mount			
Max panel thickness (mm)		7 (0.27")			
Mounting hole (mm)		19 (3/4")			
Extension Cable Data		GPS Cable		All Other Cables	
All Cables	Type	FR CS29 (UN118.03 / EN45545-2 HL2 Compliant)		CS32 (UN118.03 / EN45545-2 Compliant)	
		Fitted	Loose	Fitted	Loose
	Diameter (mm)	5 (0.2")			
	Length (m)	5 (16')			
Terminations					
4G/5G		4x SMA (m)			
WiFi		2x SMA Rev Pol			
GPS/GNSS		1x SMA(m)			

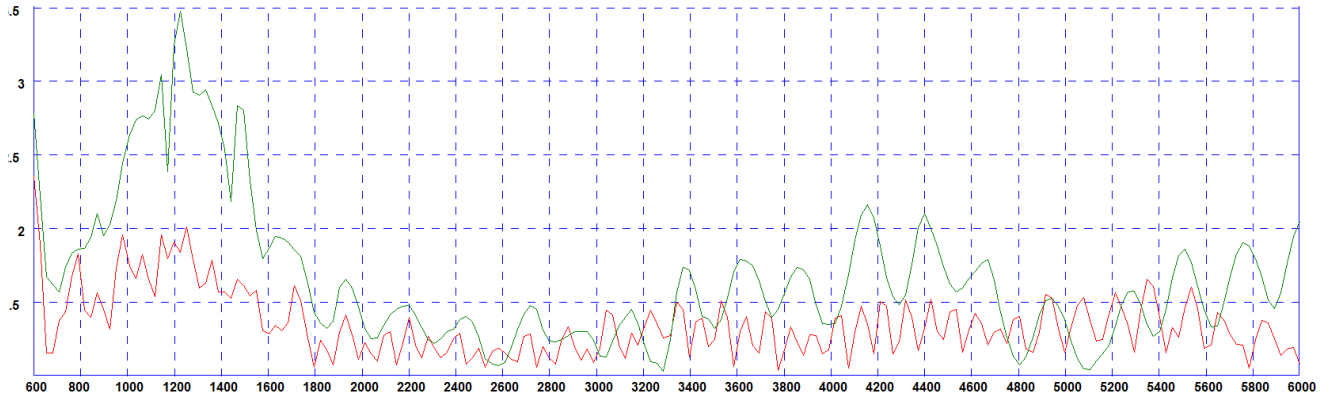
4x4 MiMo 4G/5G Dome Antenna Kit

LG-IN2445

PANORAMA  ANTENNAS

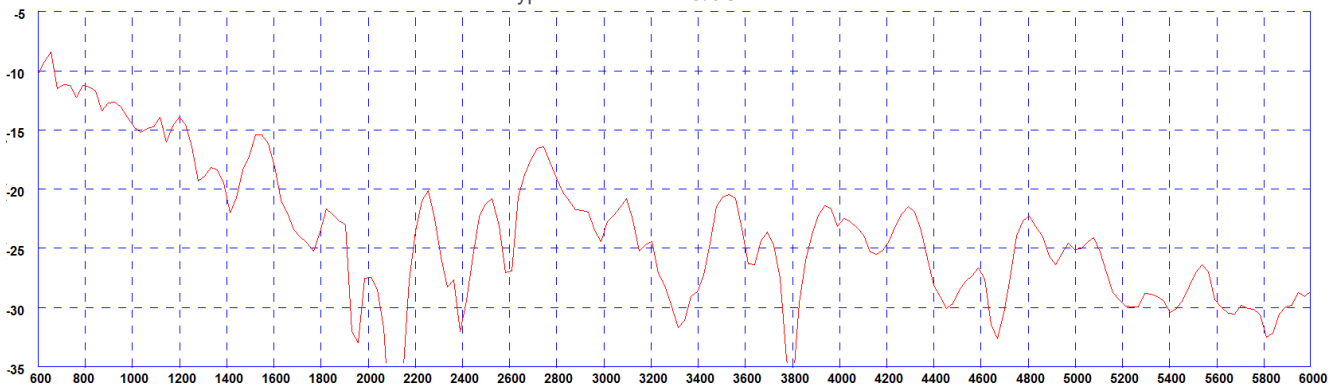
Electrical Data

Typical VSWR - 4G/5G Elements*



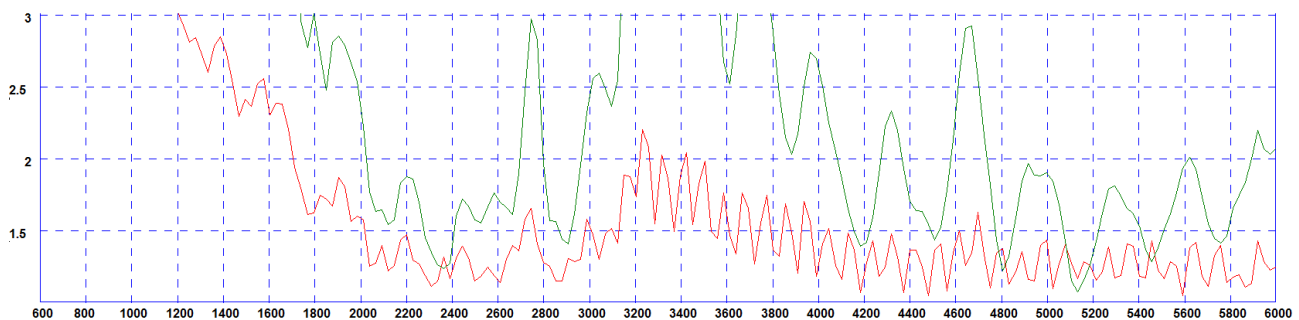
* Green Trace measured with 0.5m (1.5') of RG174 cable Red Trace measured with 5m (17') of CS32 Cable both on a 600x600mm (2'x2') groundplane

Typical Isolation - 4G/5G Elements*



* measured with 0.5m (1.5') of RG174 cable on a 600x600mm (2'x2') groundplane

Typical VSWR - WiFi Elements*



* Green Trace measured with 0.5m (1.5') of RG174 cable Red Trace measured with 5m (17') of CS32 Cable both on a 600x600mm (2'x2') groundplane