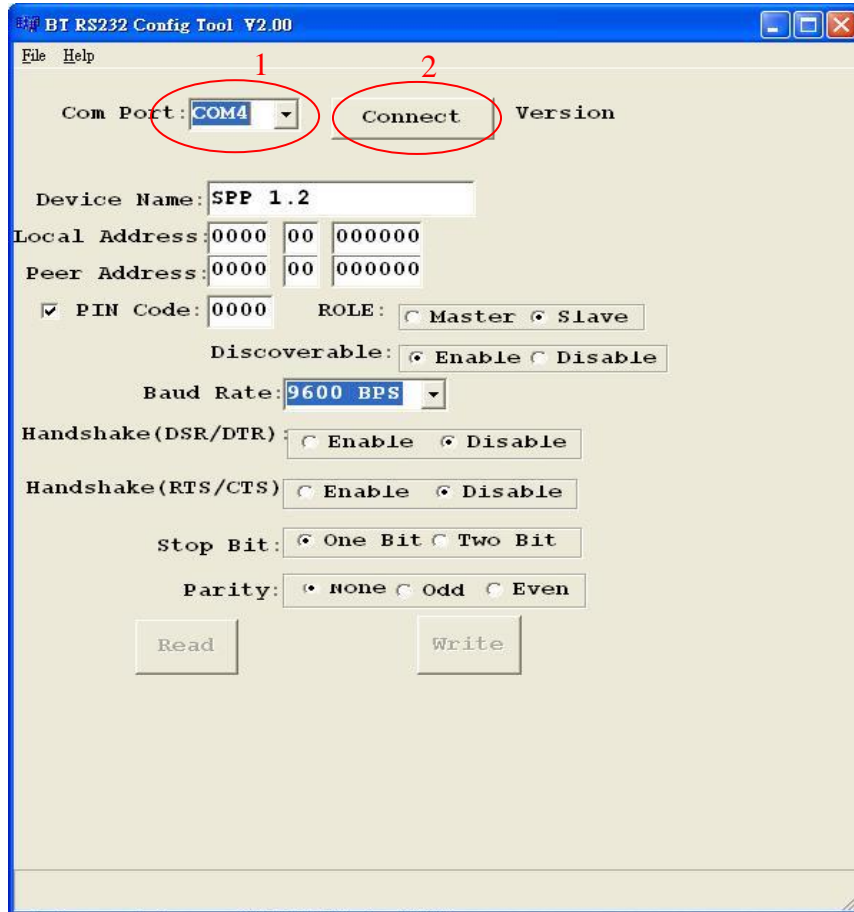


Connect the Serial to Bluetooth to PC via RS232 or RS485/422

Power on the Serial to Bluetooth

Run Configuration Utility

Select the COM port where Bluetooth Serial is connected to, for example COM4



Click “Connect” from Configuration Utility

Then **within 7 seconds**, Press the “Setup Button”



If connected successfully, configuration utility “Connect” turns into “Disconnect”  
If “Connect” does not turn into “Disconnect”, which means connection is not successful. If connection not successful, close BT1 utility, make sure COM port and all else are set up correctly, power off the Serial to Bluetooth then power on again. Then start all over and try again.

If connection is successful,  
“Connect” turns into “Disconnect”  
“Read” and “Write” turns into clickable

The screenshot shows the 'BT RS232 Config Tool V2.00' window. It has a menu bar with 'File' and 'Help'. The main area contains the following settings:

- Com Port:   Version: 2.1
- Device Name:
- Local Address:
- Peer Address:
- ☒ PIN Code:  ROLE: ☐ Master ☒ Slave
- Discoverable: ☒ Enable ☐ Disable
- Baud Rate:
- Handshake (DSR/DTR): ☐ Enable ☒ Disable
- Handshake (RTS/CTS): ☐ Enable ☒ Disable
- Stop Bit: ☒ One Bit ☐ Two Bit
- Parity: ☒ None ☐ Odd ☐ Even
-

Click “Read” to read out current parameters setting of the Serial to Bluetooth.  
Begin to edit parameters setting as needed

The screenshot shows the 'BT RS232 Config Tool V2.00' window. It features a menu bar with 'File' and 'Help'. The main area contains various configuration fields and buttons. The 'Com Port' is set to 'COM4' with a 'Disconnect' button next to it. The 'Version' is '2.1'. The 'Device Name' is 'SPP 1.2'. The 'Local Address' is '0012 C8 91F845' and the 'Peer Address' is '0000 00 000000'. The 'PIN Code' is '1234' and the 'ROLE' is 'Master'. The 'Discoverable' option is 'Enable'. The 'Baud Rate' is '9600 BPS'. The 'Handshake(DSR/DTR)' and 'Handshake(RTS/CTS)' are both set to 'Disable'. The 'Stop Bit' is 'One Bit' and the 'Parity' is 'none'. At the bottom, there are 'Read' and 'Write' buttons. The 'Read' button is circled in red.

BT RS232 Config Tool V2.00

File Help

Com Port: COM4 Disconnect Version: 2.1

Device Name: SPP 1.2

Local Address: 0012 C8 91F845

Peer Address: 0000 00 000000

☒ PIN Code: 1234 ROLE: ☒ Master ☐ Slave

Discoverable: ☒ Enable ☐ Disable

Baud Rate: 9600 BPS

Handshake(DSR/DTR): ☐ Enable ☒ Disable

Handshake(RTS/CTS): ☐ Enable ☒ Disable

Stop Bit: ☒ One Bit ☐ Two Bit

Parity: ☒ none ☐ Odd ☐ Even

Read Write

When done with parameters modification, click “Write” to save setting to the Serial to Bluetooth

BT RS232 Config Tool V2.00

File Help

Com Port: COM4 Disconnect Version: 2.1

Device Name: SPP 1.2

Local Address: 0012 C8 91F845

Peer Address: 0000 00 000000

☒ PIN Code: 1234 ROLE: ☒ Master ☐ Slave

Discoverable: ☒ Enable ☐ Disable

Baud Rate: 115200 BP!

Handshake(DSR/DTR): ☐ Enable ☒ Disable

Handshake(RTS/CTS): ☐ Enable ☒ Disable

Stop Bit: ☒ One Bit ☐ Two Bit

Parity: ☒ none ☐ Odd ☐ Even

Read Write

If two units of this Serial to Bluetooth are to be paired, please set one unit as Master, and the other unit as Slave.

#### Master / Slave Connection

Boot Master / Slave at the same time, Master will automatically search Slave and connect with Slave automatically

If connection successfully, Pair / SYS LED will remain light on.

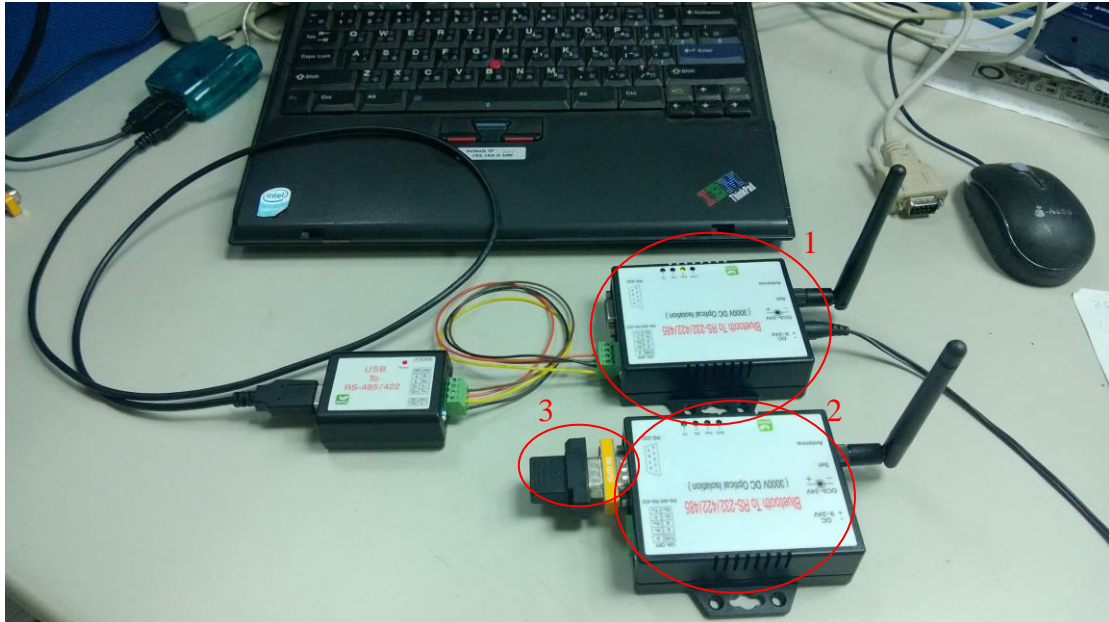




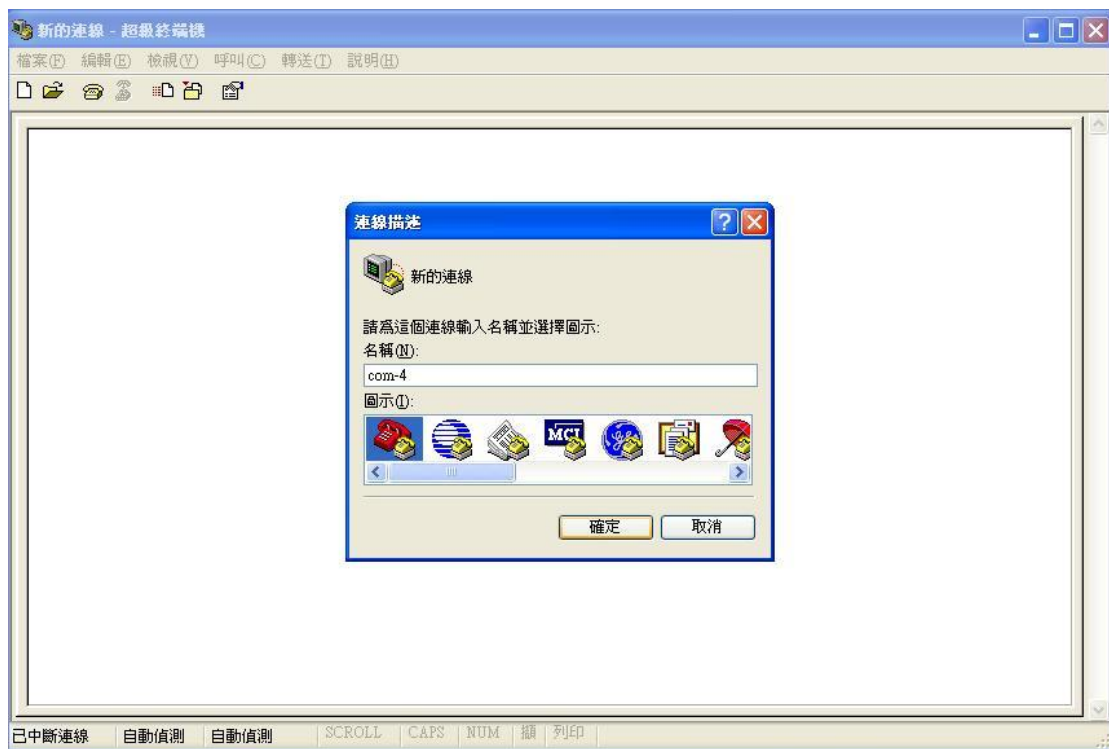
## Connection Test

See following example

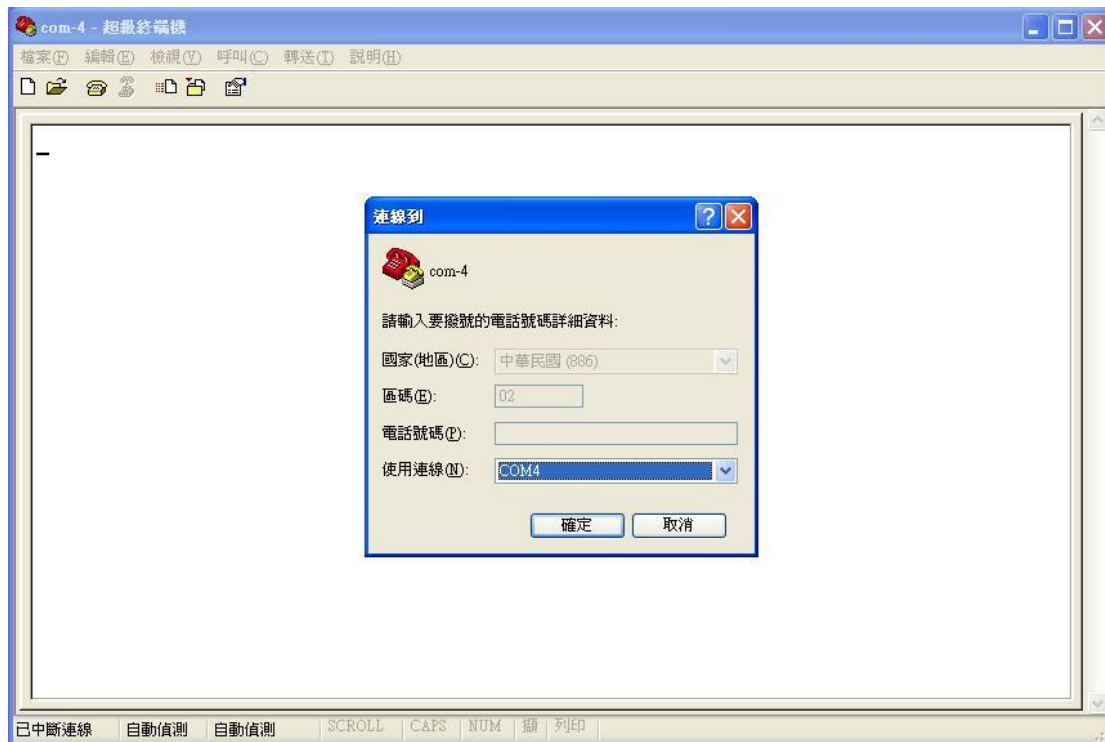
1. Master unit
2. Slave unit
3. Slave unit RS232 TX and RX are shorted



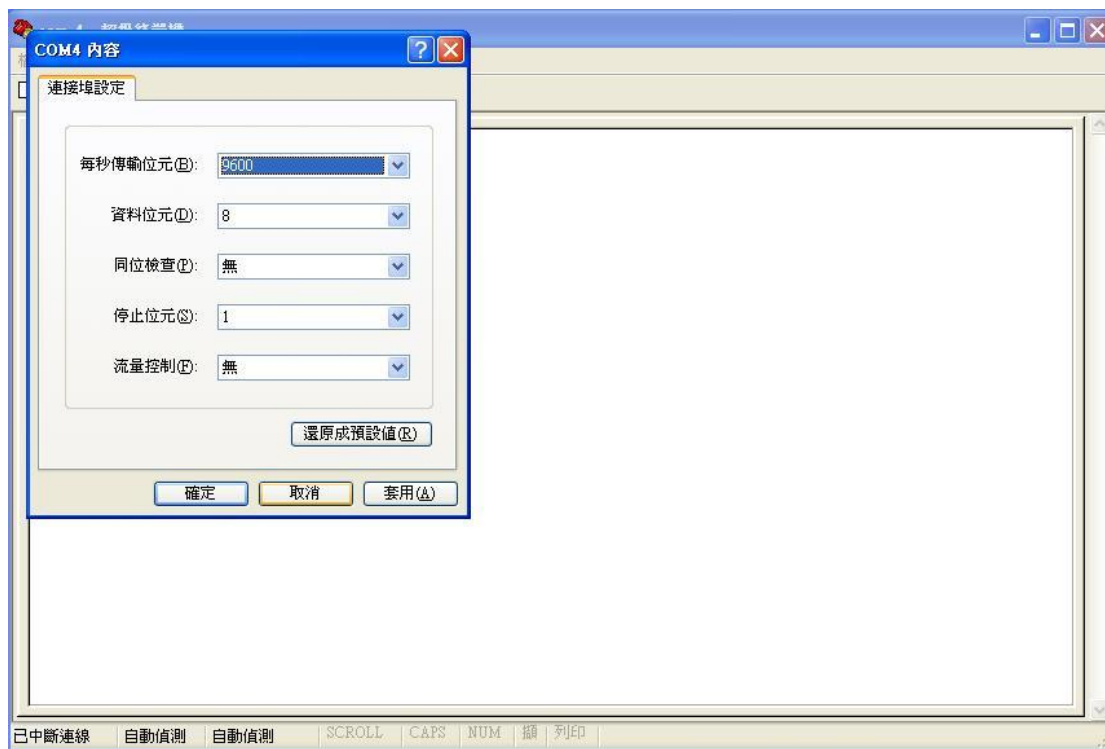
Start HyperTerminal (set the connection name for example as COM-4)



## Set up a connection COM Port



Set the transmission rate and related parameters (the same as the internal parameters of the Serial to Bluetooth)



Begin to type whatever characters from HyperTerminal, and you will see those typed characters are exactly echo back which means connection is successful.

