



®

***AXIOMTEK***

## **GOT3846T-832**

**All-in-One  
8.4" SVGA TFT Fanless  
Compact-Size  
Panel PC**

**User's Manual**



## **Disclaimers**

This manual has been carefully checked and believed to contain accurate information. Axiomtek Co., Ltd. assumes no responsibility for any infringements of patents or any third party's rights, and any liability arising from such use.

Axiomtek does not warrant or assume any legal liability or responsibility for the accuracy, completeness or usefulness of any information in this document. Axiomtek does not make any commitment to update the information in this manual.

Axiomtek reserves the right to change or revise this document and/or product at any time without notice.

No part of this document may be reproduced, stored in a retrieval system, or transmitted, in any form or by any means, electronic, mechanical, photocopying, recording, or otherwise, without the prior written permission of Axiomtek Co., Ltd.

**©Copyright 2014 Axiomtek Co., Ltd.**  
**All Rights Reserved**  
**March 2014, Version A5**  
**Printed in Taiwan**

## Safety Precautions

Before getting started, please read the following important safety precautions.

1. The GOT3846T-832 does not come equipped with an operating system. An operating system must be loaded first before installing any software into the computer.
2. Be sure to ground yourself to prevent static charge when installing the internal components. Use a grounding wrist strap and place all electronic components in any static-shielded devices. Most electronic components are sensitive to static electrical charge.
3. Disconnect the power cord from the GOT3846T-832 before any installation. Be sure both the system and external devices are turned OFF. A sudden surge of power could ruin sensitive components that the GOT3846T-832 must be properly grounded.
4. The brightness of the flat panel display will be getting weaker as a result of frequent usage. However, the operating period varies depending on the application environment.
5. Turn OFF the system power before cleaning. Clean the system using a cloth only. Do not spray any liquid cleaner directly onto the screen. The GOT3846T-832 comes with a touchscreen. Although the touchscreen is chemical resistant, it is recommended that you spray the liquid cleaner on a cloth first before wiping the screen. In case your system comes without the touchscreen, you must follow the same procedure and not spray any cleaner on the flat panel directly.
6. Avoid using sharp objects to operate the touchscreen. Scratches on the touchscreen may cause malfunction or internal failure to the touchscreen.
7. The flat panel display is not susceptible to shock or vibration. When assembling the GOT3846T-832, make sure it is securely installed.
  - Do not open the system's back cover. If opening the cover for maintenance is a must, only a trained technician is allowed to do so. Integrated circuits on computer boards are sensitive to static electricity. To avoid damaging chips from electrostatic discharge, observe the following precautions: Before handling a board or integrated circuit, touch an unpainted portion of the system unit chassis for a few seconds. This will help to discharge any static electricity on your body.
  - When handling boards and components, wear a wrist-grounding strap, available from most electronic component stores.

## Trademarks Acknowledgments

Axiomtek is a trademark of Axiomtek Co., Ltd.

IBM, PC/AT, PS/2, VGA are trademarks of International Business Machines Corporation.

Intel<sup>®</sup> and Atom<sup>™</sup> are registered trademarks of Intel Corporation.

MS-DOS, Microsoft C and Quick BASIC are trademarks of Microsoft Corporation.

VIA is a trademark of VIA Technologies, Inc.

SST is a trademark of Silicon Storage Technology, Inc.

UMC is a trademark of United Microelectronics Corporation.

Other brand names and trademarks are the properties and registered brands of their respective owners.

# Table of Contents

---

Disclaimers.....	ii
Safety Precautions.....	iii
<b>CHAPTER 1 INTRODUCTION.....</b>	<b>1</b>
1.1    General Description.....	2
1.2    Specifications .....	3
1.2.1    Main CPU Board.....	3
1.2.2    I/O System .....	3
1.2.3    System Specification.....	4
1.3    Dimensions .....	5
1.4    I/O Outlets .....	7
1.5    Packing List.....	8
<b>CHAPTER 2 HARDWARE INSTALLATION.....</b>	<b>9</b>
2.1    Open back cover .....	10
2.2    CF card Installation.....	11
2.3    Jumper and Switch Setting & COM port Connector.....	13
2.3.1    COM1 Configuration.....	14
2.3.3    Auto Power On (JP4) .....	15
2.3.4    Restore BIOS Optimal Defaults (JP6) .....	15
2.3.5    COM port Connector .....	15
2.4    Ethernet .....	16
2.5    Mountings: Panel / Wall / Desktop / VESA .....	17
2.5.1    VESA-ARM/Wall-Mount .....	17
2.5.2    Panel-mount Kit Assembly .....	18
2.6    HDD Installation .....	19
2.7    DRAM Installation .....	22
2.8    Wireless LAN Card Installation .....	26
2.9    Power Input .....	28
<b>CHAPTER 3 AMI BIOS SETUP UTILITY .....</b>	<b>29</b>
3.1    Starting .....	29
3.2    Navigation Keys .....	30
3.3    Main Menu .....	31
3.4    Advanced Menu.....	32
3.5    Chipset Menu .....	39
3.6    Boot Menu .....	41
3.7    Security Menu .....	42
3.8    Exit Menu.....	43
<b>CHAPTER 4 DRIVERS INSTALLATION .....</b>	<b>45</b>
4.1    System .....	45
4.2    Touch Screen .....	46
4.2.1    Specification.....	46
4.2.2    Driver Installation- Windows 7 .....	46
4.3    Embedded O.S. ....	49

## CHAPTER 1 INTRODUCTION

This chapter contains general information and detailed specifications of the GOT3846T-832. Chapter 1 includes the following sections:



- General Description
- Specification
- Dimensions
- I/O Outlets
- Package List

## 1.1 General Description

The GOT3846T-832 adopts a 8.4-inch SVGA TFT LCD with 450-nit brightness and an Intel® Atom™ processor N2600 1.6 GHz to provide excellent computing performance and thermal resistance. This fanless platform is especially designed for operating under heavy-duty environment including steel refinery, oil pipe, ship, machine maker operating systems and many more. Having below abilities makes GOT3846T-832 surely a most robust and cost-effective solution.

### Wide Operating Temperature Range

GOT3846T-832 features a technology of wide operating temperature range which allows it to work between -20°C to +55°C. It incorporates compact ID and fanless cooling system with a low power Intel® Atom™ processor N2600 1.6 GHz, making the platform a power-efficient solution.

### Reliable and Stable Design

The GOT3846T-832 adopts a fan-less cooling system, which makes it especially suitable for vibration-heavy environments, best for the transportation, ship, and industrial machinery markets. For high capacity storage requirement, GOT3846T-832 can work under 1.0G (5 ~ 500Hz, random for 2.5" HDD) in operation mode with a patent of anti-vibration design. The patent improves the system reliability and sustainability.

### WLAN Antenna Supported (optional)

GOT3846T-832 has a PCI Express Mini Card slot for optional add-ons such as wireless LAN card for 802.11 b/g connections & 3G/GPRS application, and more. It also provides an optional fixed rotational WLAN antenna for wireless network connection.

### More Features

GOT3846T-832 utilizes one 204-pin DDR3 800 SODIMM system memory max. up to 2GB, one SATA HDD and one CF. It provides over-current protection-fuse and a full set of I/O including RS-232, RS-232/422/485, USB 2.0, audio (line-out), Gigabit Ethernet and VGA. Additionally, this slim unit supports panel mount, wall mount (optional), VESA mount (optional) and desktop stand (optional).

## **1.2 Specifications**

### **1.2.1 Main CPU Board**

- **CPU**
  - Intel® Atom™ N2600 1.6GHz processor onboard
- **System Chipset**
  - Intel® NM10 Express
- **BIOS**
  - America Megatrends BIOS
- **System Memory**
  - One 204-pin DDR3 800MHz SO-DIMM socket
  - Maximum memory up to 2GB

### **1.2.2 I/O System**

- **Standard I/O**
  - 1 x RS-232/422/485, 3 x RS232
  - 4x USB 2.0
  - 1x VGA
- **Ethernet**
  - 2x RJ45 for Giga Ethernet
- **Audio**
  - 1 x Line-out
- **Expansion**
  - 1 x Mini-card slot
- **Storage**
  - 1 x 2.5" SATA
  - 1 x CF card slot
- **Power connector**
  - Phoenix power connector

### 1.2.3 System Specification

- 8.4" SVGA(800x600) LCD with LED backlight
- 5 wired resistive Touch
- Fanless Heat Dispensing Design
- IP65 aluminum front bezel
- Disk drive housing:
  - One 2.5" SATA drive
- Net Weight
  - 3.4 Kgs (7.49 lb)
- Dimension (Main Body Size)
  - 248x 58.3x 183mm
- Operation Temperature
  - -20°C to 55°C
- Relative Humidity
  - 10% to 95% @ 40°C, Non-Condensing
- Power input
  - 10~30VDC with phoenix power connector



**Note:** All specifications and images are subject to change without notice.



**Note:** If the operation temperature is higher than 30°C, the wide temperature HDD is recommended to be used on the device.



**Note:** If the operation temperature is higher than 35°C, the wide temperature CF is recommended to be used on the device.

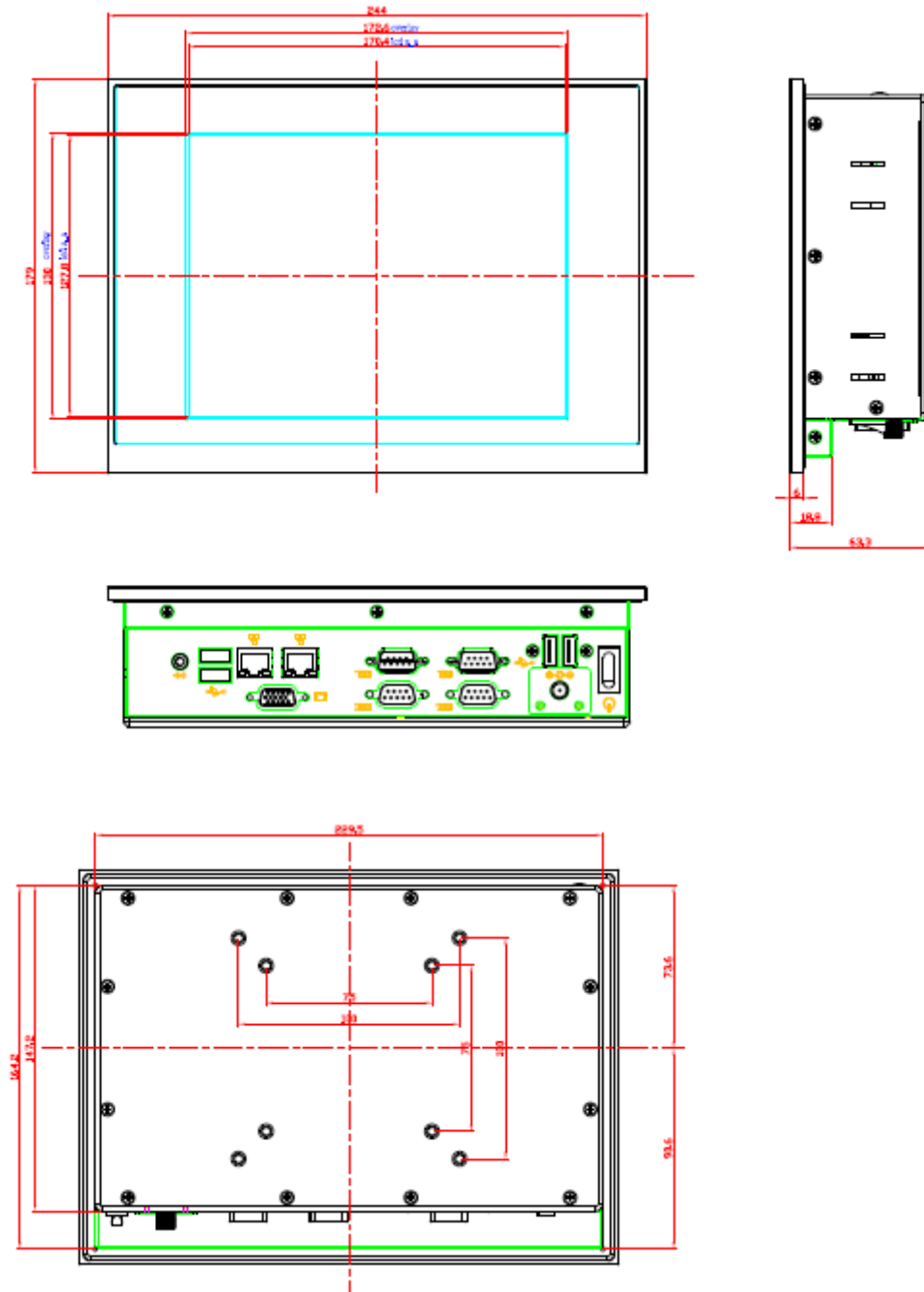


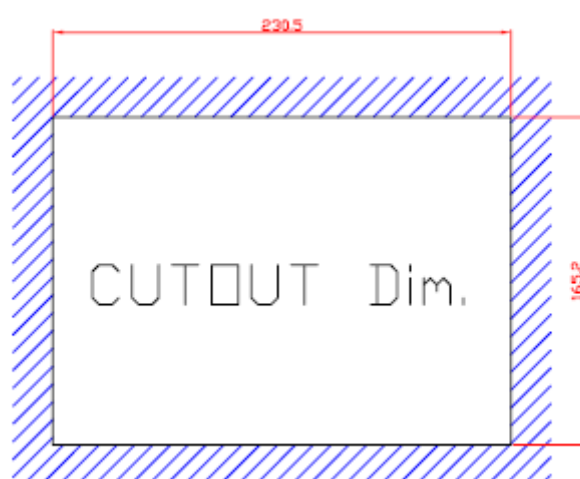
**Note:** If the operation temperature is higher than 40°C, the wide temperature DRAM is recommended to be used on the device.



### 1.3 Dimensions

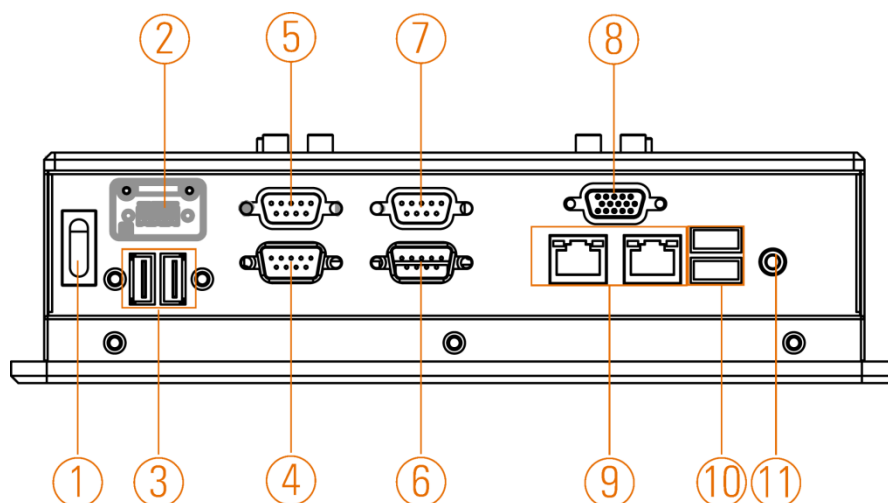
The following diagrams show the dimensions and outlines of GOT3846T-832.





## 1.4 I/O Outlets

Please refer to the following illustration for I/O locations of the GOT3846T-832.



No	Function	No	Function
1	POWER SWITCH (ATX)	7	COM 4 (RS-232)
2	Power Input connector	8	VGA
3	Dual USB 2.0 ports	9	Ethernet (RJ-45)
4	COM 1 (RS-232/422/485)	10	Dual USB 2.0 ports
5	COM 3 (RS-232)	11	AUDIO (LINE-OUT)
6	COM 2 (RS-232)		

## 1.5 Packing List

When you receive the GOT3846T-832, the bundled package should contain the following items:

- GOT3846T-832 unit x 1
- Driver CD x 1
- Phoenix connector x 1
- Panel mount kit x 6
- Screws for HDD x 4

If you can not find the package or any items are missing, please contact Axiomtek distributors immediately.

## CHAPTER 2

# HARDWARE INSTALLATION

The GOT3846T-832 provides rich I/O ports and flexible expansions for you to meet different demand, for example CF card. The chapter will show you how to install the hardware. It includes:

- **CompactFlash™ Card**
- **Serial Port**
- **Ethernet**
- **Mounting Method**
- **Hard disk**
- **DRAM**
- **Wireless LAN Card**
- **Power**

## 2.1 Open back cover

This section tells users how to open back cover. Please follow the steps below.

**Step 1** Unscrew 12 screws on the back cover. Please refer the photo below.



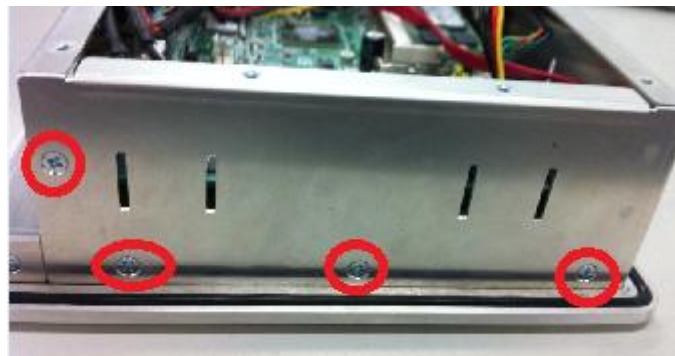
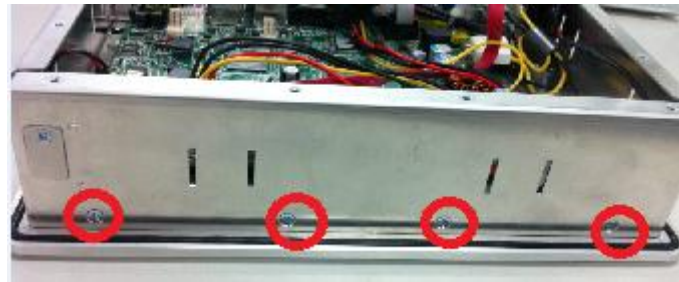
**Step 2** Remove the back cover.



## 2.2 CF card Installation

The GOT3846T-832 provides one CF slot for users to install CompactFlash™ card. Please refer to the following instructions for installation:

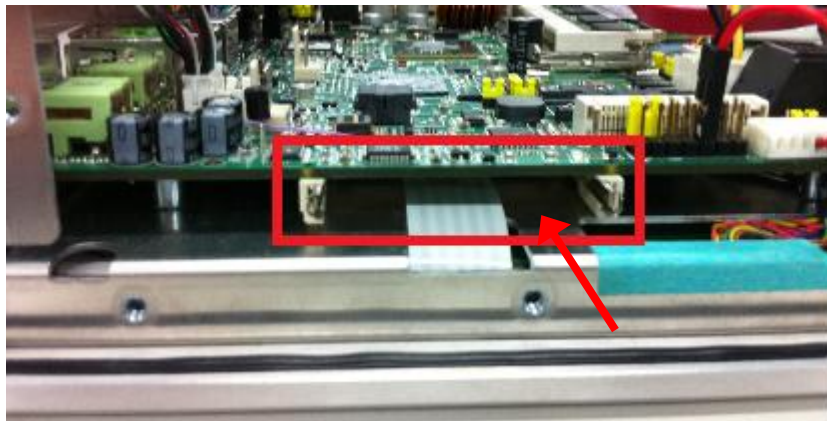
**Step 1 Unscrew 12 screws on the chassis.**



**Step 2 Remove the chassis.**



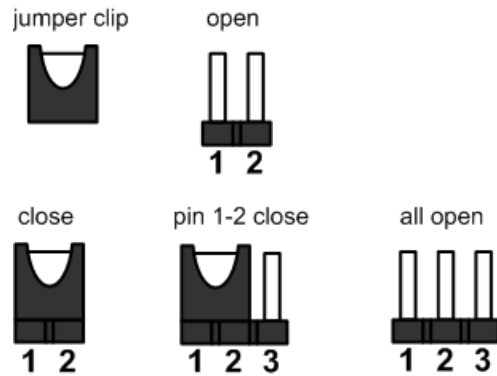
**Step 3 Insert the card into the socket.**





## 2.3 Jumper and Switch Setting & COM port Connector

Jumper is a small component consisting of jumper clip and jumper pins. Install jumper clip on 2 jumper pins to close. And remove jumper clip from 2 jumper pins to open. The following illustration shows how to set up jumper.

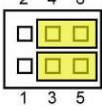
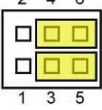
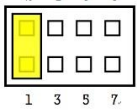
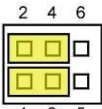
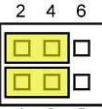
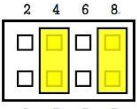
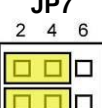
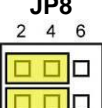
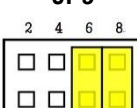


Before applying power to GOT5152T-832, please make sure all of the jumpers and switch are in factory default position. Below you can find a summary table and onboard default settings.

Jumper	Description		Setting
JP4	Auto Power On Default: Disable		2-3 close
JP5	CF Voltage Selection Default: +3.3V		1-2 close
JP6	Restore BIOS Optimal Defaults (Clear CMOS) Default: Normal Operation		1-2 close
JP7	COM1 RS-232/422/485 Mode Setting Default: RS-232		3-5, 4-6 close
JP8			3-5, 4-6 close
JP9			1-2 close
JP10	COM1 Data/Power Selection Default: RS-232 Data	Pin 1: DCD	3-5 close
		Pin 9: RI	4-6 close
JP11	COM2 Data/Power Selection Default: RS-232 Data	Pin 1: DCD	3-5 close
		Pin 9: RI	4-6 close
JP12	COM3 Data/Power Selection Default: RS-232 Data	Pin 1: DCD	3-5 close
		Pin 9: RI	4-6 close

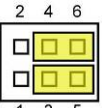
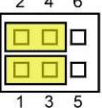
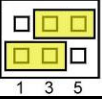
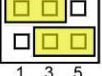
### 2.3.1 COM1 Configuration

The COM1~3 are a standard DB-9 connector. Those connectors are equipped with The GOT5152T-832 has three serial ports. COM1 is RS-232/422/485, while COM2 and COM3 are RS-232. The following table shows you set COM1 port mode:

Description	Jumper Setting		
RS-232 (Default)	<b>JP7</b> 	<b>JP8</b> 	<b>JP9</b> 
RS-422	<b>JP7</b> 	<b>JP8</b> 	<b>JP9</b> 
RS-485	<b>JP7</b> 	<b>JP8</b> 	<b>JP9</b> 

### 2.3.2 COM port Power Configuration

All of the serial ports can output data or power through jumper setting. The following table shows you how to do that.

Description	Jumper Setting(JP10~JP12)
Pin1: DCD Pin9: RI (Default)	
Pin1: +5V Pin9: +12V	
Pin1: +5V Pin9: RI	
Pin1: DCD Pin9: +12V	

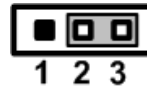


**Note:** Each port +5V Maximum: 2A, +12V Maximum: 1A.

### 2.3.3 Auto Power On (JP4)

If JP4 is enabled for power input, the system will be automatically power on without pressing soft power button. If JP4 is disabled for power input, it is necessary to manually press soft power button to power on the system.

Function	Setting
Enable auto power on	1-2 close
Disable auto power on (Default)	2-3 close



### 2.3.4 Restore BIOS Optimal Defaults (JP6)

Put jumper clip to pin 2-3 for a few seconds then move it back to pin 1-2. Doing this procedure can restore BIOS optimal defaults.

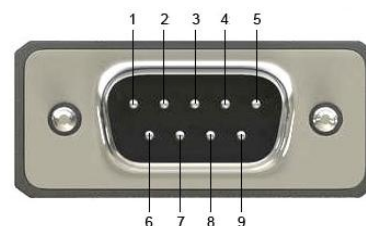
Function	Setting
Normal operation (Default)	1-2 close
Restore BIOS optimal defaults	2-3 close



### 2.3.5 COM port Connector

The pin assignment of RS-232/RS-422/RS-485 is listed on the following table. If you need COM1 port to support RS-422 or RS-485 mode, please refer to Jumper Settings

Pin	RS-232	RS-422	RS-485
1	DCD	TX-	Data-
2	RXD	TX+	Data+
3	TXD	RX+	No use
4	DTR	RX-	No use
5	GND	GND	GND
6	DSR	No use	No use
7	RTS	No use	No use
8	CTS	No use	No use
9	RI	No use	No use

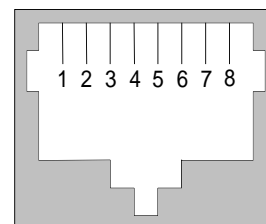


## 2.4 Ethernet

The GOT3846T-832 is equipped with a high performance Plug and Play Ethernet interface, full compliant with IEEE 802.3 standard, and can be connected with a RJ-45 LAN connector.

Please refer to detailed pin assignment list below:

Pin	Signal
1	TX+ (Data transmission positive)
2	TX- (Data transmission negative)
3	Rx+ (Data reception positive)
4	RJ45 termination
5	RJ45 termination
6	Rx- (Data reception negative)
7	RJ45 termination
8	RJ45 termination



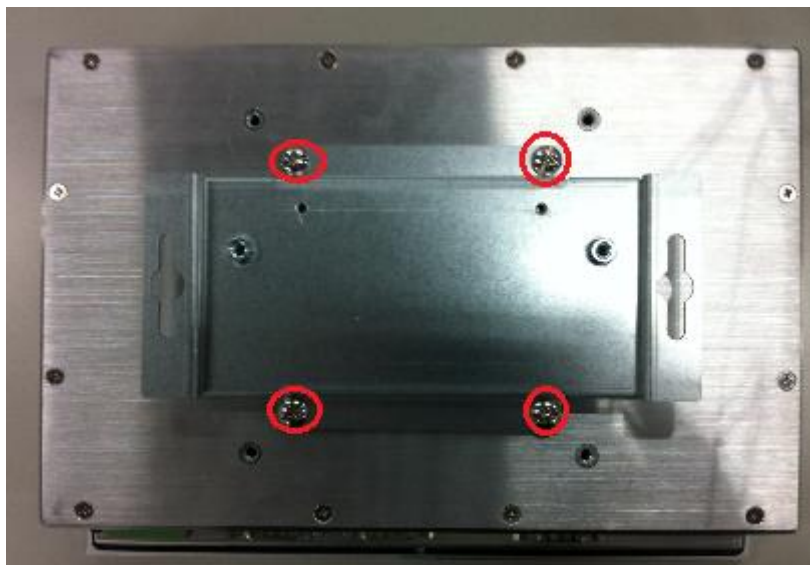
RJ-45

## 2.5 Mountings: Panel / Wall / Desktop / VESA

There are 4 application options for the GOT3846T-832, Panel/Wall/Desktop/VESA mountings.

### 2.5.1 VESA-ARM/Wall-Mount

The GOT3846T-832 provides VESA mount: 75x75 mm. Screw four screws to fix the kit in the back chassis.



### 2.5.2 Panel-mount Kit Assembly

The GOT3846T-832 is designed for panel mount application. To mount the GOT3846T-832, the standard set of mounting kit (included in the system packaging) is needed.

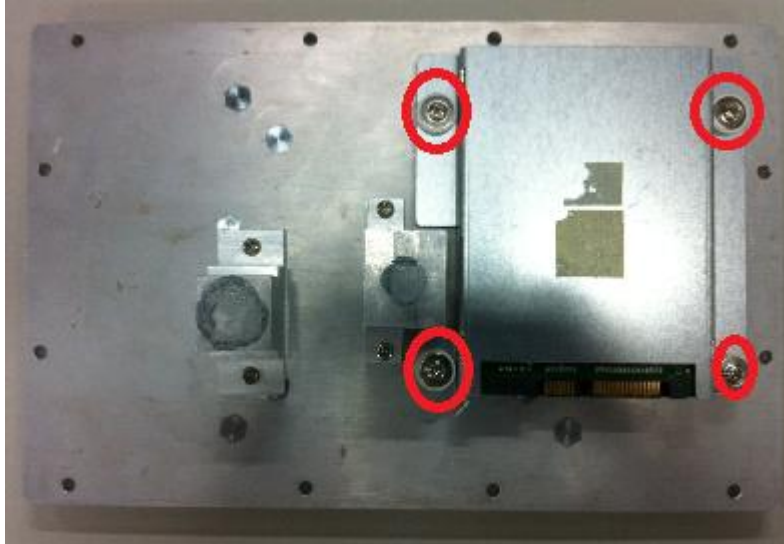


## 2.6 HDD Installation

The GOT3846T-832 provides a convenient Hard Disk Drive (HDD) bracket for users to install 2.5" SATA HDD. Please follow the steps:

**Step 1** Refer section 2.1 to open the back cover.

**Step 2** Unscrew 4 screws to take off the HDD bracket.

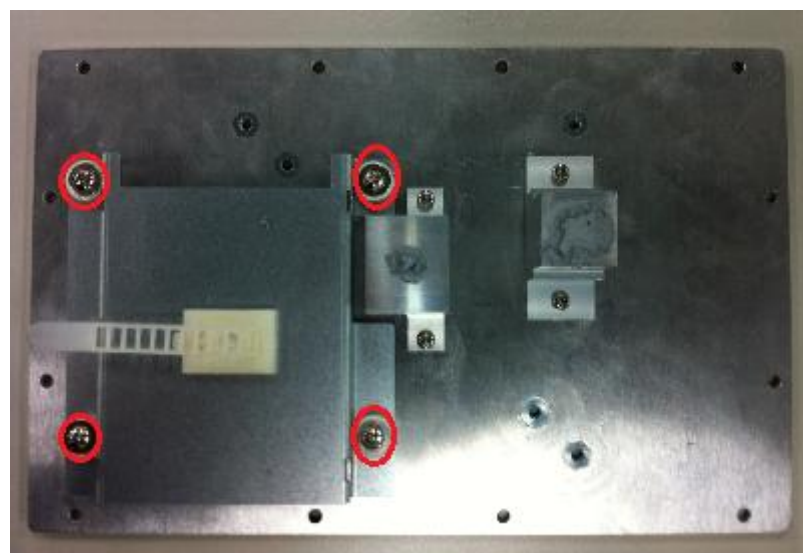


**Step 3** Fix the HDD on bracket by 4 screws.

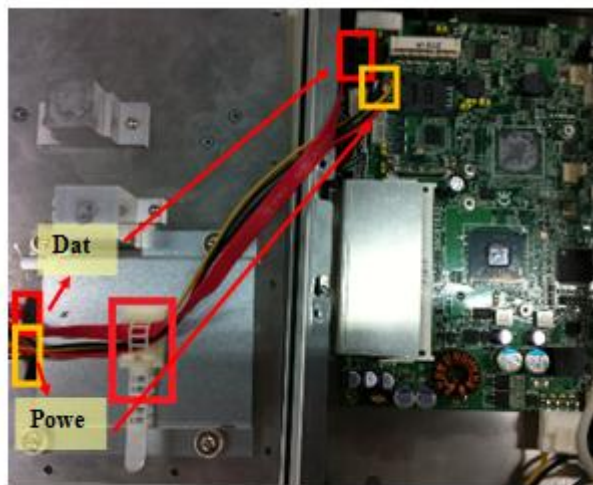




**Step 4** Fix the HDD bracket into the cover, fasten the power and data cable in the cable tie, then plug the cables to connectors. Installation completes.







## 2.7 DRAM Installation

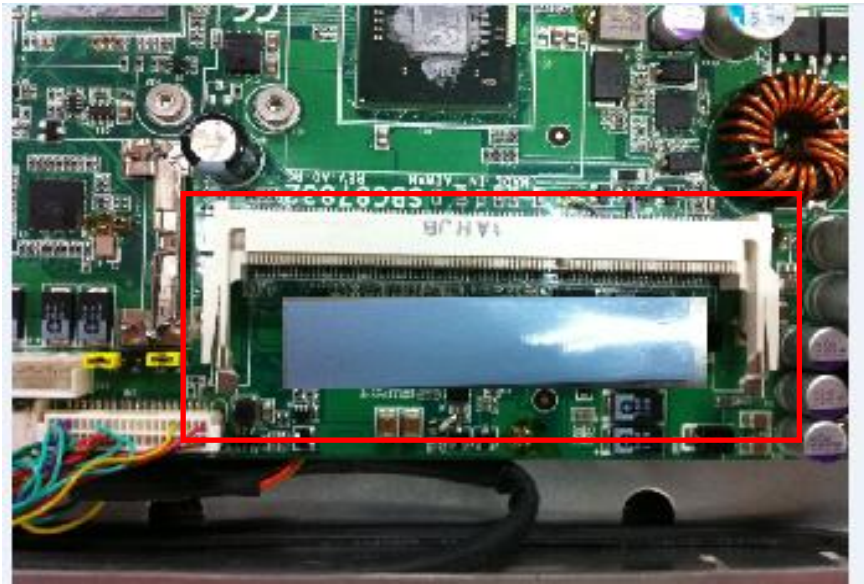
The GOT3846T-832 provides one 204-pin DDR3 SODIMM socket that support system memory up to 2GB. Please follow steps below to install the memory modules:

**Step 1** Refer to section 2.1 to open the back cover and find out DIMM socket on mainboard (SBC87832).



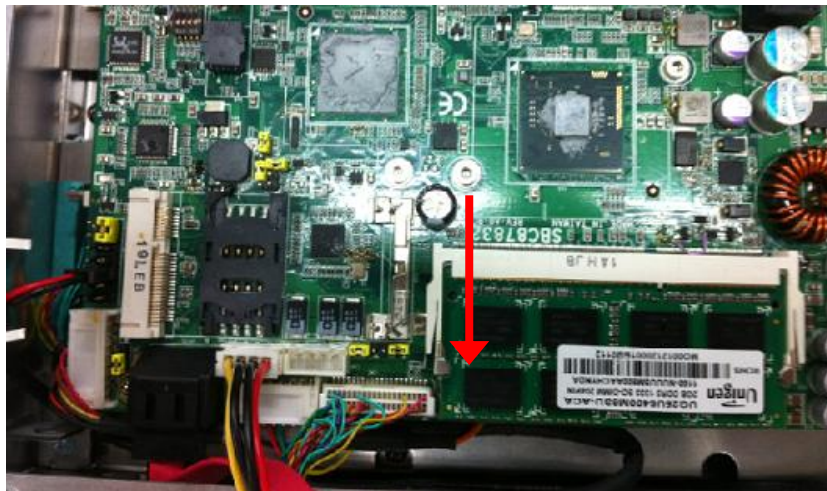
**Step 2** Stick the thermal pad on the main board and rip the red mylar from it.



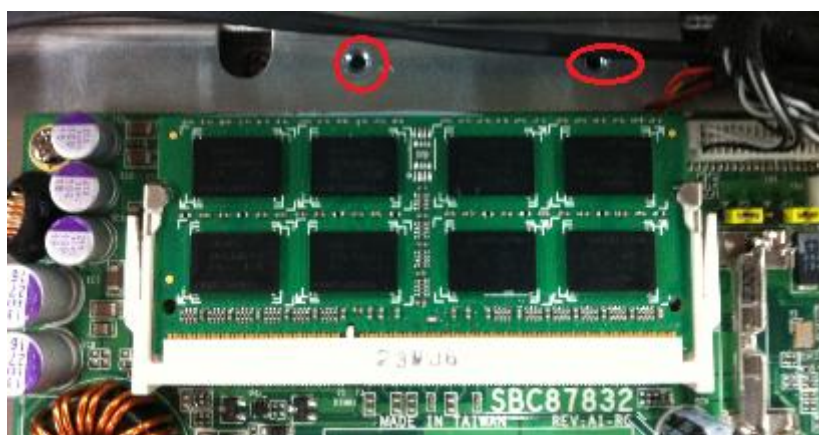
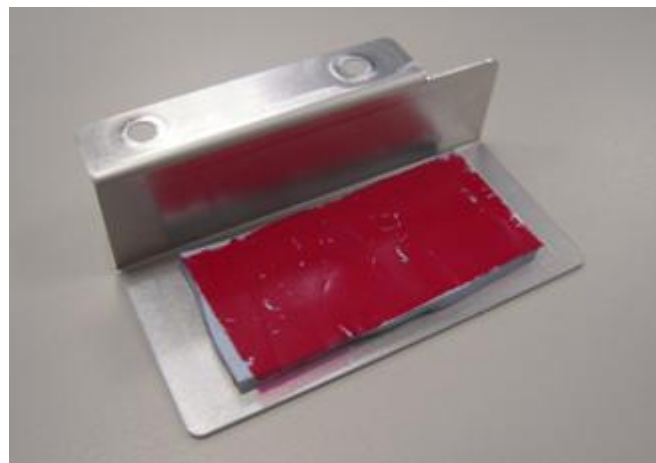


**Step 3** Insert the DRAM to the DIMM socket, and then push it down firmly until it is clipped by the socket.





**Step 4** Rip the red mylar from DRAM bracket, then screw it into the chassis. Installation completed.



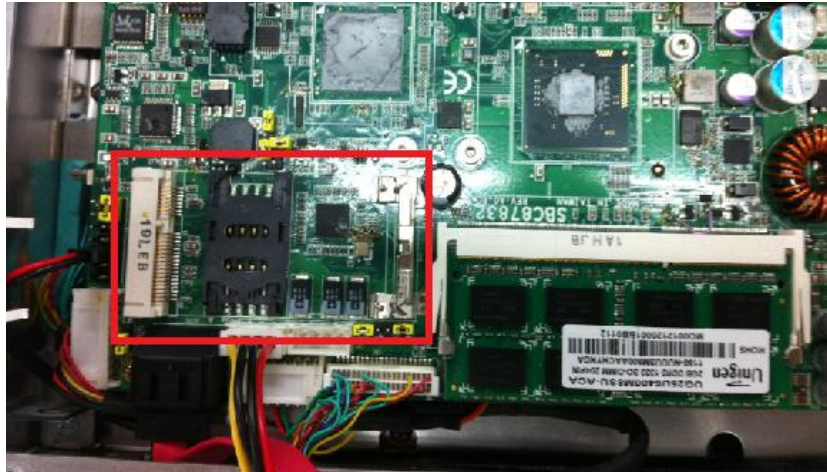




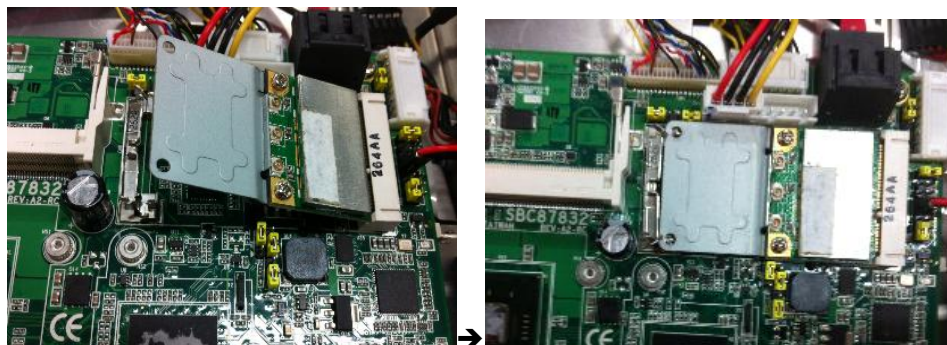
## 2.8 Wireless LAN Card Installation

The GOT3846T-832 provides one Mini card slot for user to install one wireless LAN card. When installing the wireless LAN card, refer to the following instructions and illustration:

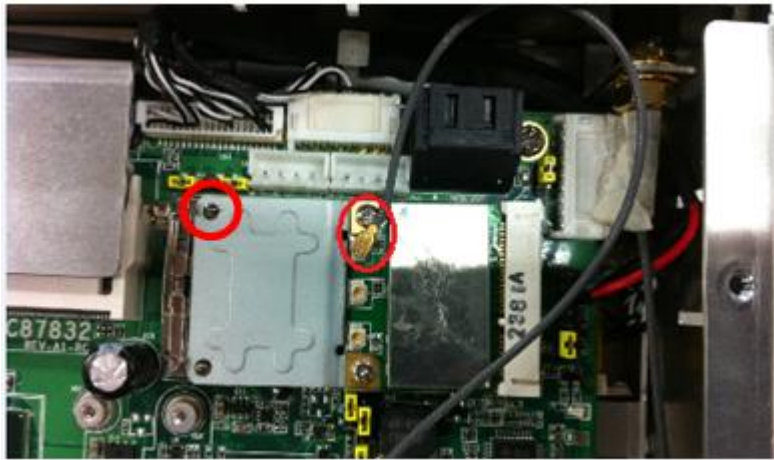
**Step 1** Refer to section 2.1 to open the back cover and find out mini-card slot on mainboard.



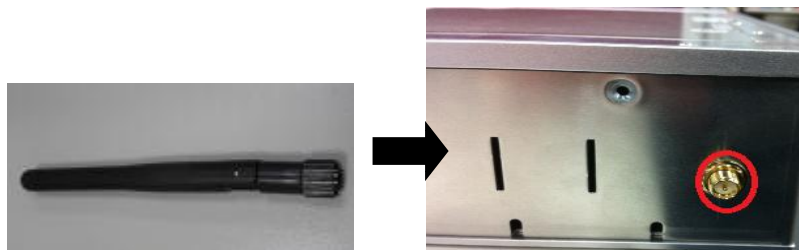
**Step 2** Insert the wireless LAN card to the slot. Push it down firmly until it is clipped by the slot.



**Step 3 Find the built-in Antenna cable and connect it wireless LAN card.**



**Step 4 Remove the antenna plug from the top of back cover, and then install the antenna on the antenna connector.**



**Note: Please have the extended bracket when using half-size mini card.**

## 2.9 Power Input

GOT3846T-832 equips with a phoenix type power connector. It adopts 10VDC to 30VDC. Please follow the signs on power connector to connect DC power source.

+: Power positive      G: Safety ground      -: Power negative



**Note:** The safety ground must be connected to ensure the unit working appropriately.



## **CHAPTER 3**

### **AMI BIOS SETUP UTILITY**

This chapter provides users with detailed description how to set up basic system configuration through the AMIBIOS8 BIOS setup utility.

#### **3.1 Starting**

To enter the setup screens, follow the steps below:

Turn on the computer and press the <Del> key immediately.

After you press the <Delete> key, the main BIOS setup menu displays. You can access the other setup screens from the main BIOS setup menu, such as the Chipset and Power menus.

## 3.2 Navigation Keys

The BIOS setup/utility uses a key-based navigation system called hot keys. Most of the BIOS setup utility hot keys can be used at any time during the setup navigation process.

These keys include <F1>, <F10>, <Enter>, <ESC>, <Arrow> keys, and so on.



**Note:** *Some of navigation keys differ from one screen to another.*

<b>← Left/Right</b>	The Left and Right <Arrow> keys allow you to select a setup screen.
<b>↑↓ Up/Down</b>	The Up and Down <Arrow> keys allow you to select a setup screen or sub-screen.
<b>+– Plus/Minus</b>	The Plus and Minus <Arrow> keys allow you to change the field value of a particular setup item.
<b>Tab</b>	The <Tab> key allows you to select setup fields.
<b>F1</b>	The <F1> key allows you to display the General Help screen.
<b>F10</b>	The <F10> key allows you to save any changes you have made and exit Setup. Press the <F10> key to save your changes.
<b>Esc</b>	The <Esc> key allows you to discard any changes you have made and exit the Setup. Press the <Esc> key to exit the setup without saving your changes.
<b>Enter</b>	The <Enter> key allows you to display or change the setup option listed for a particular setup item. The <Enter> key can also allow you to display the setup sub- screens.

### 3.3 Main Menu

When you first enter the Setup Utility, you will enter the Main setup screen. You can always return to the Main setup screen by selecting the Main tab. There are two Main Setup options. They are described in this section. The Main BIOS Setup screen is shown below.



#### ➤ System Time/Date

Use this option to change the system time and date. Highlight System Time or System Date using the <Arrow> keys. Enter new values through the keyboard. Press the <Tab> key or the <Arrow> keys to move between fields. The date must be entered in MM/DD/YY format. The time is entered in HH:MM:SS format.

### 3.4 Advanced Menu

- **Launch PXE OpROM**

Use this item to enable or disable the boot ROM function of the onboard LAN chip when the system boots up.

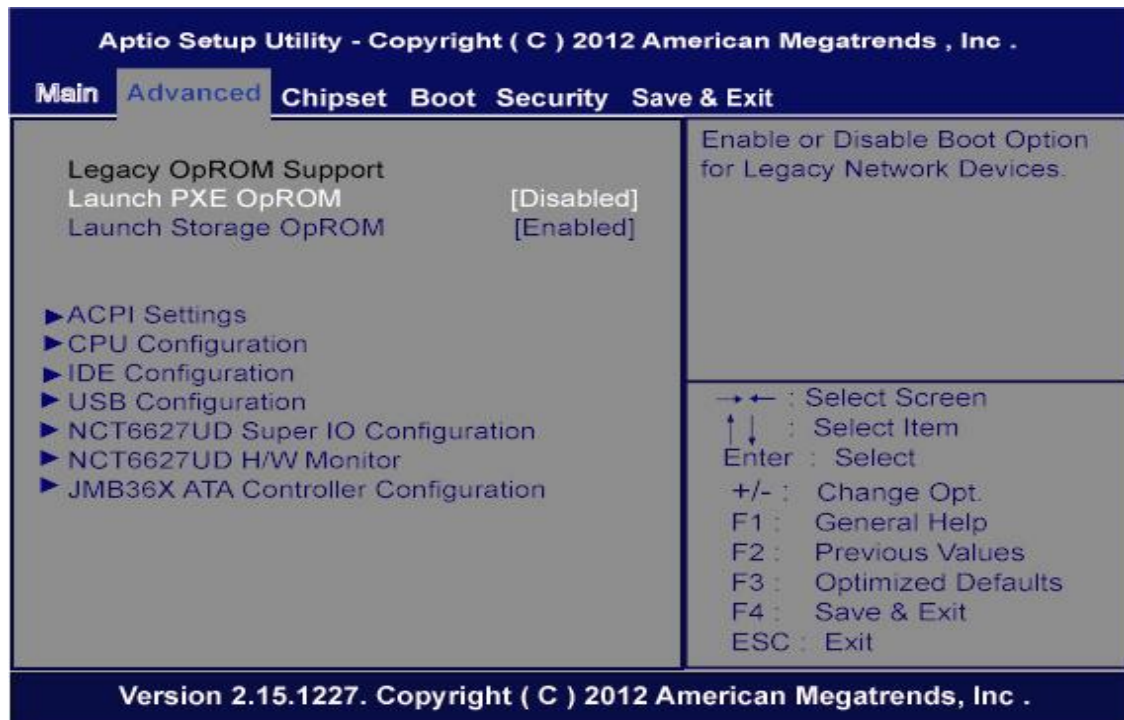
- **Launch Storage OpROM**

Enable or disable boot option for legacy mass storage devices with Option ROM.

The Advanced menu allows users to set configuration of the CPU and other system devices. You can select any of the items in the left frame of the screen to go to the sub menus:

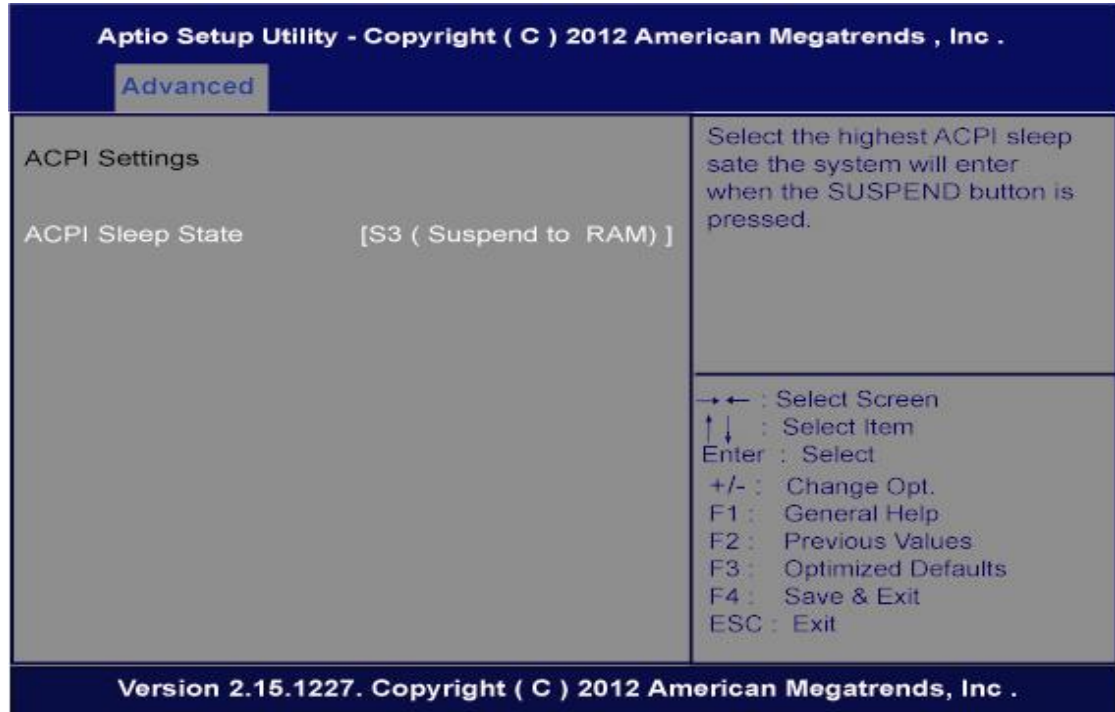
- ▶ ACPI Settings
- ▶ CPU Configuration
- ▶ IDE Configuration
- ▶ USB Configuration
- ▶ NCT6627UD Superior IO Configuration
- ▶ NCT6627UD HW Monitor
- ▶ JMB36X ATA Controller Configuration

For items marked with “▶”, please press <Enter> for more options.



- **ACPI Settings**

You can use this screen to select options for the ACPI Settings, and change the value of the selected option. A description of the selected item appears on the right side of the screen.

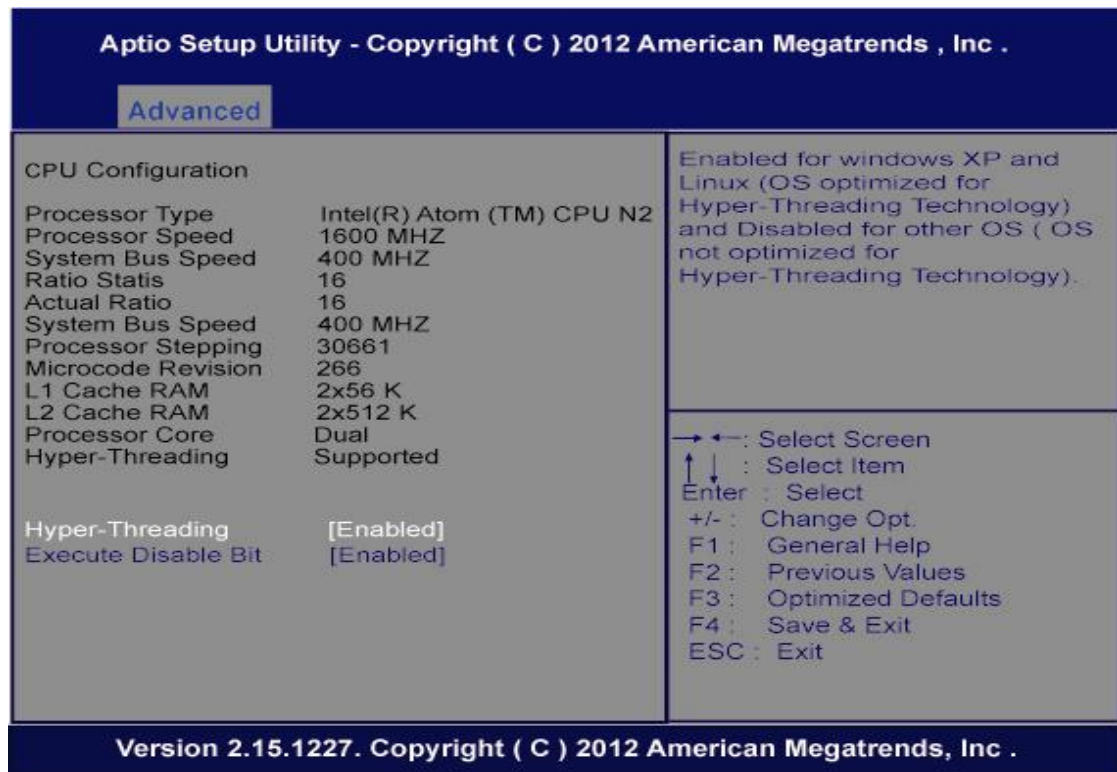


- **ACPI Sleep State**

Use this item to select the highest ACPI sleep state the system will enter.

## ● CPU Configuration

This screen shows the CPU Configuration, and you can change the value of the selected option.



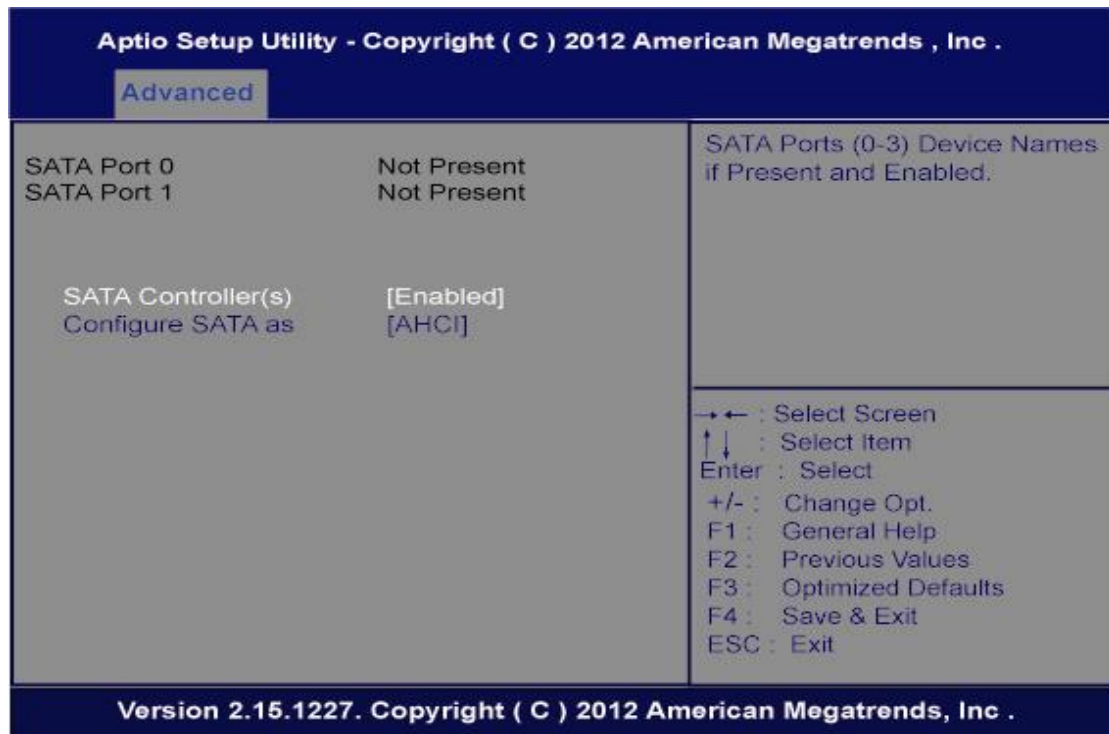
### ➤ Hyper Threading Technology

Use this item to enable or disable Hyper-Threading Technology, which makes a single physical processor perform multi-tasking function as two logical ones.

### ➤ Execute Disable Bit

This item helps you enable or disable the No-Execution Page Protection Technology

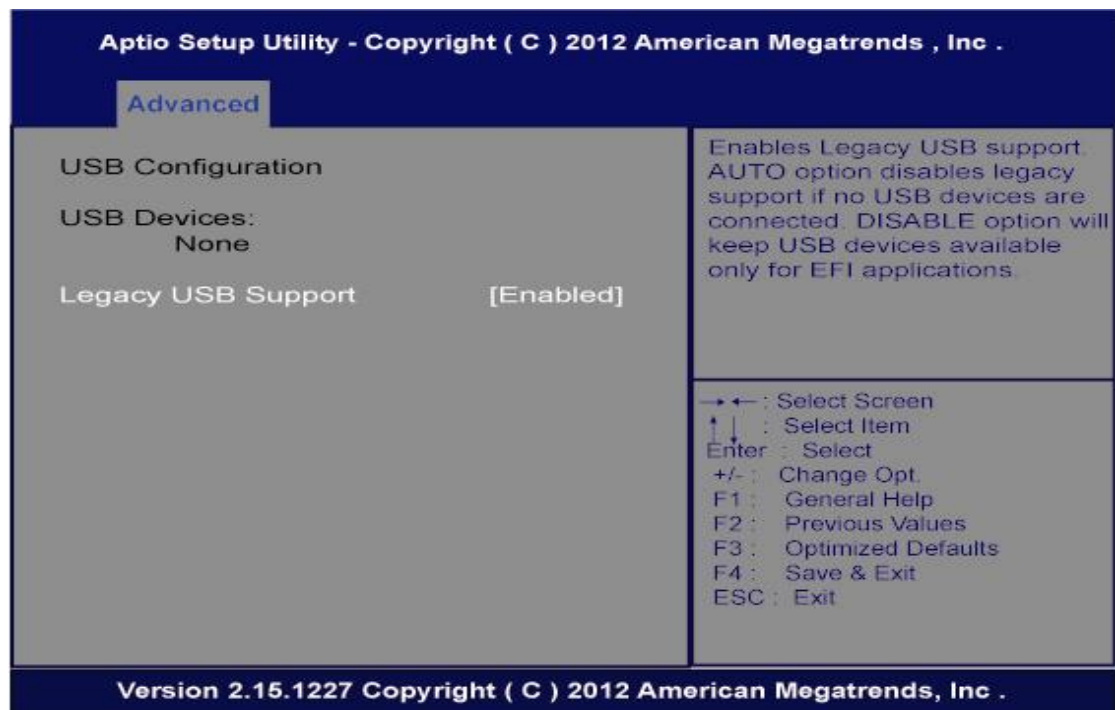
- **IDE Configuration**



- **SATA Controller(s)**  
The optional settings are: [Disabled]; [Enabled].
- **Configure SATA as**  
The optional settings are: [IDE]; [AHCI].

## • USB Configuration

You can use this screen to select options for the USB Configuration, and change the value of the selected option. A description of the selected item appears on the right side of the screen.



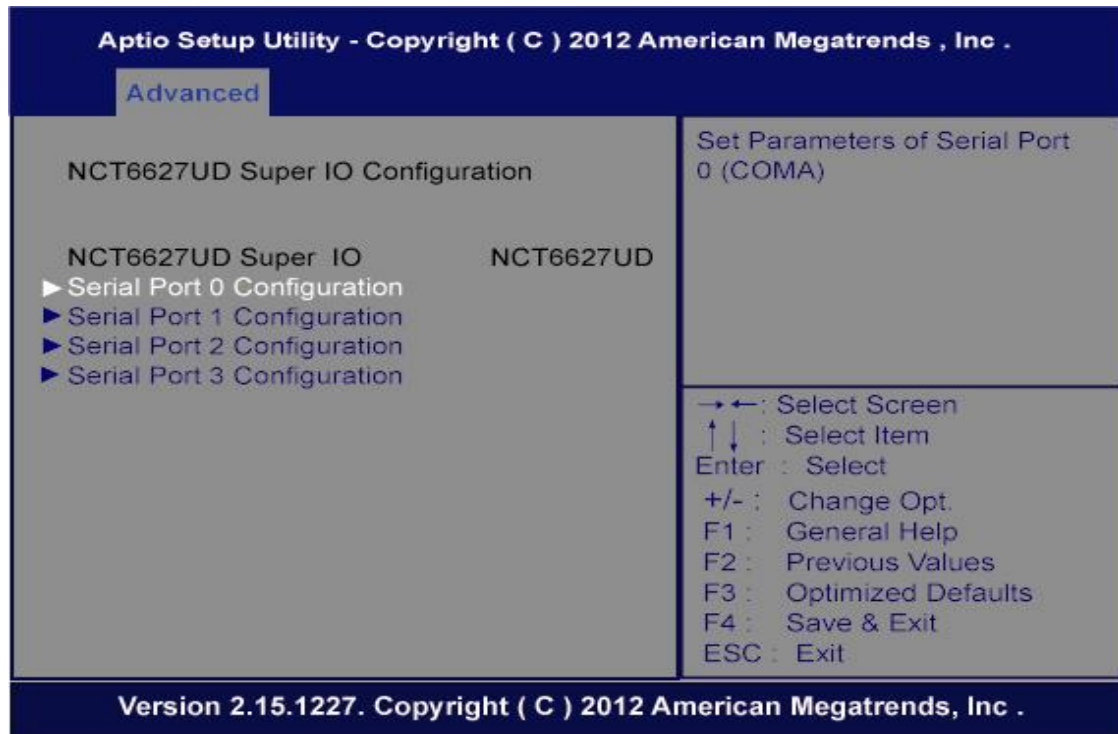
### ➤ Legacy USB Support

The optional settings are: [Auto]; [Disabled]; [Enabled].



- **NCT6627UD Super IO Configuration**

You can use this screen to select options for the Super IO Configuration, and change the value of the selected option. A description of the selected item appears on the right side of the screen

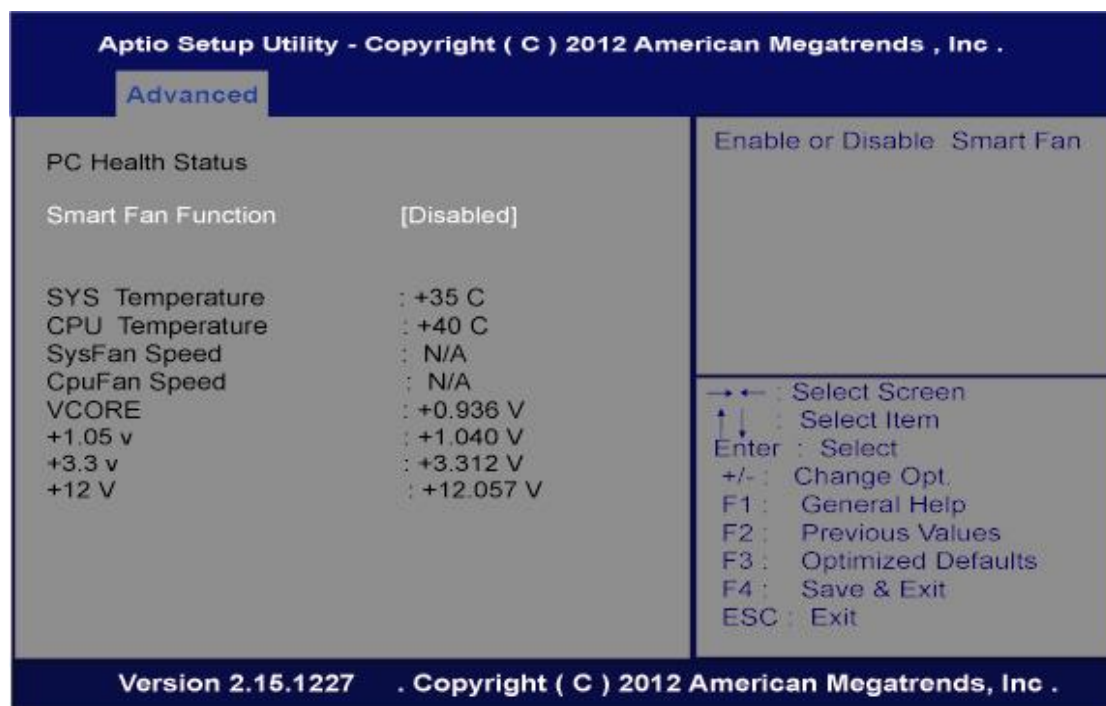


- **Serial Port Configuration**

Use this item to set parameters of serial port 0~3.

## ● PC Health Status

This screen shows the Hardware Health Configuration, and a description of the selected item appears on the right side of the screen.



### 3.5 Chipset Menu

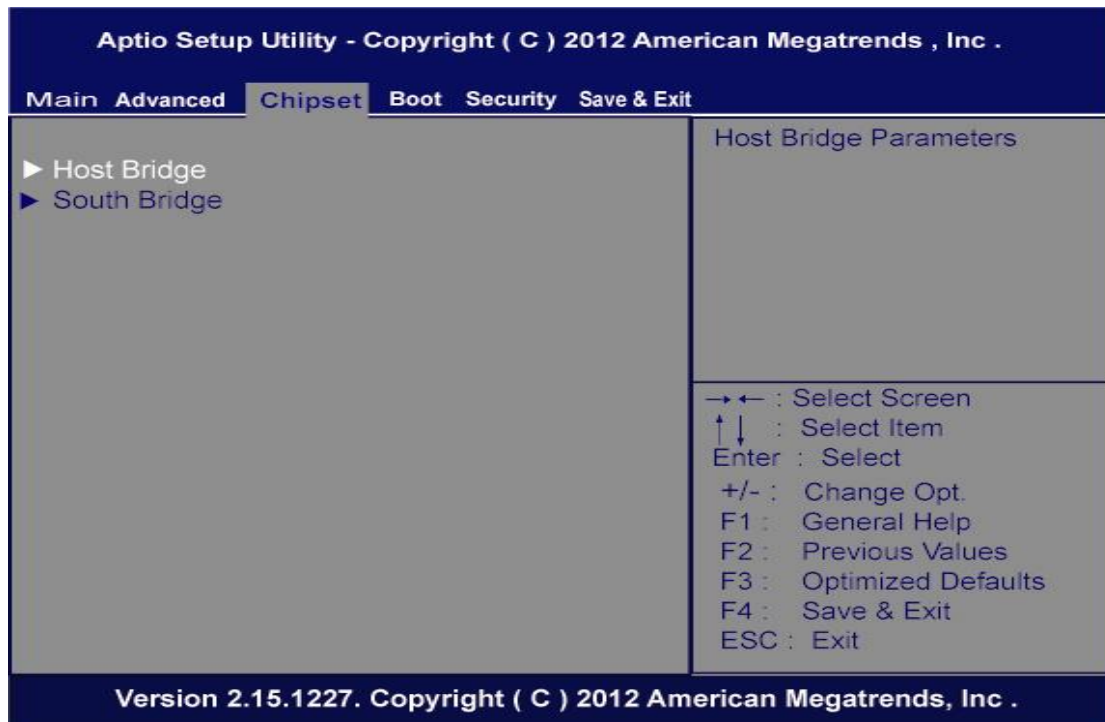
The Chipset menu allows users to change the advanced chipset settings. You can select any of the items in the left frame of the screen to go to the sub menus:

- **Host Bridge**

Host Bridge For items marked with “▶”, please press <Enter> for more options.

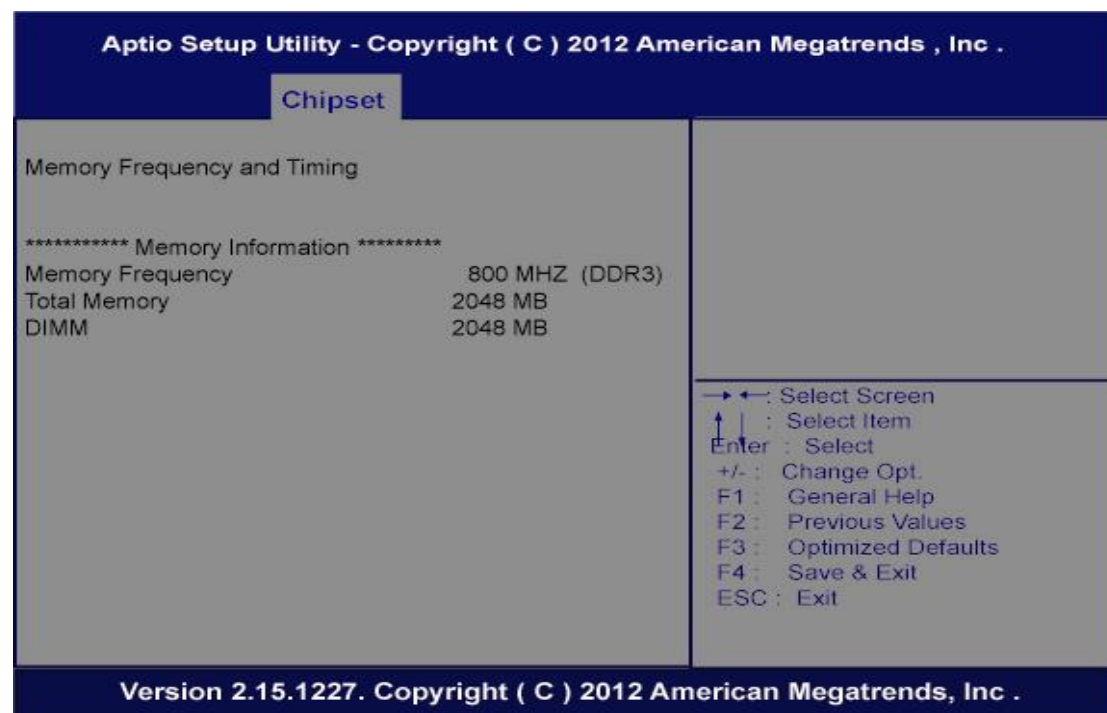
- **South Bridge**

South Bridge For items marked with “▶”, please press <Enter> for more options.



- **Memory Frequency and Timing**

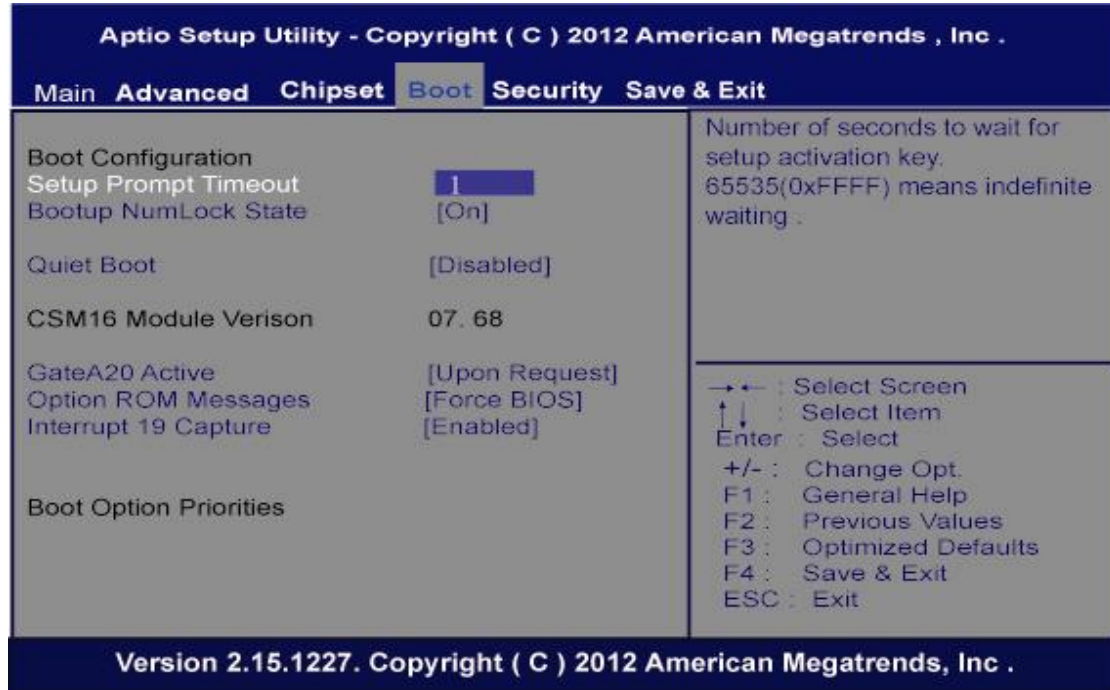
This item is for memory frequency and timing settings. Press <Enter> to go to the sub menu.



### 3.6 Boot Menu

The Boot menu allows users to change boot options of the system.

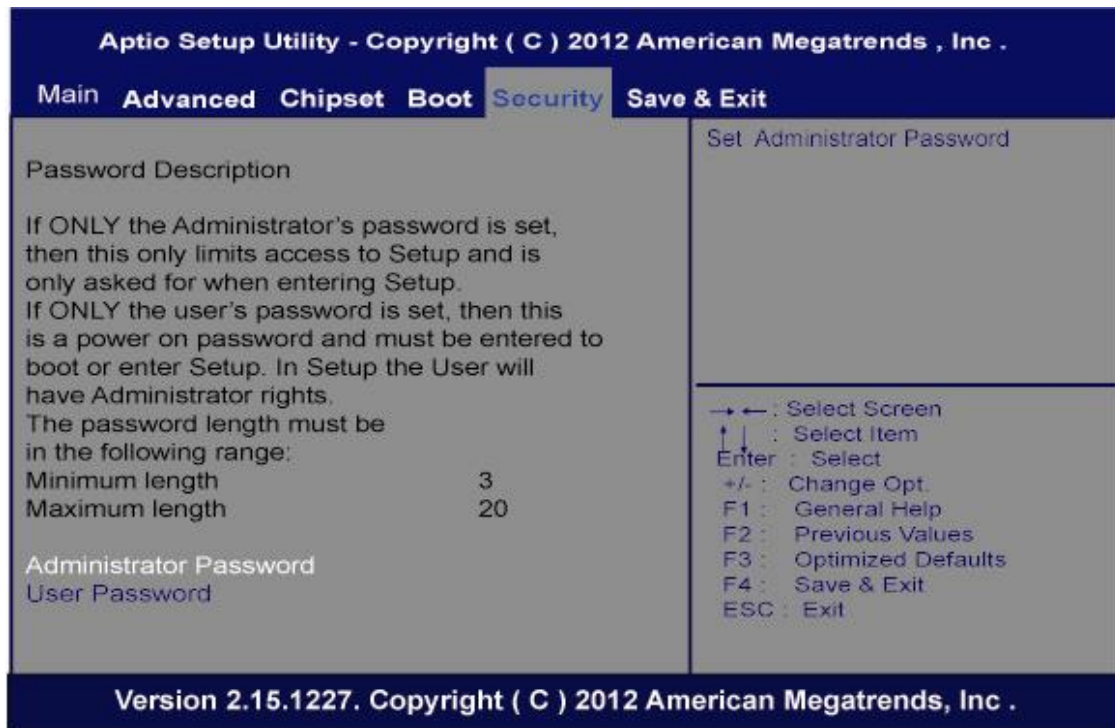
- **Boot Settings Configuration**



- **Setup Prompt Timeout**  
Use this item to set number of seconds to wait for setup activation key.
- **Bootup NumLock State**  
Use this item to select the power-on state for the NumLock.. The optional settings are: [On]; [Off].
- **GateA20 Active**  
If Upon Request is selected, GA20 can be disabled using BIOS services. If Always is selected, disabling G20 is not allowed; this option is useful when any RT code is executed above 1MB.
- **Option ROM Messages**  
Set display mode for option ROM. Configuration options are Force BIOS and Keep Current.
- **Interrupt 19 Capture**  
If this item is enabled, this function makes the option ROM to trap Interrupt 19.
- **Boot Option Priorities**  
These are settings for boot priority. Specify the boot device priority sequence from the available devices.

### 3.7 Security Menu

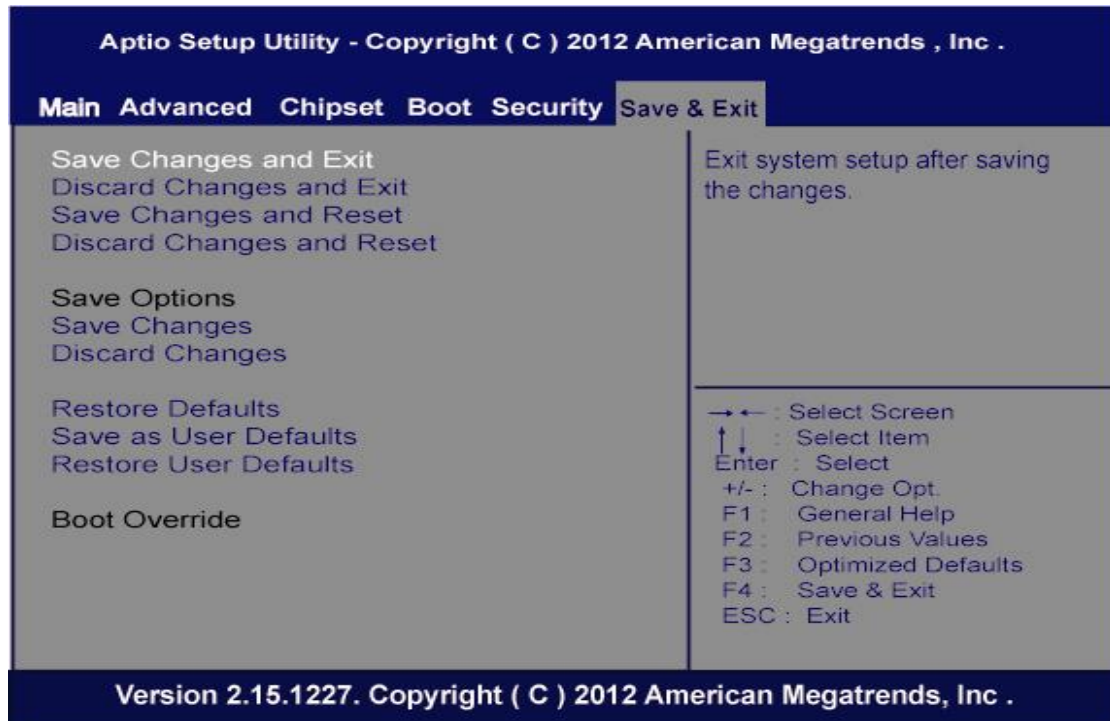
The Security menu allows users to change the security settings for the system.



- **Administrator Password**  
This item indicates whether an administrator password has been set. If the password has been installed, Installed displays. If not, Not Installed displays.
- **User Password**  
This item indicates whether a user password has been set. If the password has been installed, Installed displays. If not, Not Installed displays.

### 3.8 Exit Menu

The Save & Exit menu allows users to load system configuration with optimal or failsafe default values.



- **Save Changes and Exit**  
When you have completed the system configuration changes, select this option to leave Setup and reboot the computer so the new system configuration parameters can take effect. Select Save Changes and Exit from the Exit menu and press <Enter>. Select Ok to save changes and exit.
- **Discard Changes and Exit**  
Select this option to quit Setup without making any permanent changes to the system configuration. Select Discard Changes and Exit from the Exit menu and press <Enter>. Select Ok to discard changes and exit.
- **Save Changes and Reset**  
When you have completed the system configuration changes, select this option to leave Setup and reboot the computer so the new system configuration parameters can take effect. Select Save Changes and Reset from the Save & Exit menu and press <Enter>. Select Yes to save changes and reset.

- **Discard Changes and Reset**  
Select this option to quit Setup without making any permanent changes to the system configuration and reboot the computer. Select Discard Changes and Reset from the Save & Exit menu and press <Enter>. Select Yes to discard changes and reset.
- **Save Changes**  
When you have completed the system configuration changes, select this option to save changes. Select Save Changes from the Save & Exit menu and press <Enter>. Select yes to save changes.
- **Discard Changes**  
Select this option to quit Setup without making any permanent changes to the system configuration. Select Discard Changes from the Save & Exit menu and press <Enter>. Select Yes to discard changes.
- **Restore Defaults**  
It automatically sets all Setup options to a complete set of default settings when you select this option. Select Restore Defaults from the Save & Exit menu and press <Enter>.
- **Save as User Defaults**  
Select this option to save system configuration changes done so far as User Defaults. Select Save as User Defaults from the Save & Exit menu and press <Enter>.
- **Restore User Defaults**  
It automatically sets all Setup options to a complete set of User Defaults when you select this option. Select Restore User Defaults from the Save & Exit menu and press <Enter>.
- **Boot Override**  
Select a drive to immediately boot that device regardless of the current boot order.



**Note:** *If you want to use a CF card that capacity is less than 2GB (such as 1GB, 512MB), we recommend you may switch "AHCI mode" to "IDE mode" with "Configure SATA as" of the BIOS setting. And please make sure that users of Windows embedded OS need to install with "IDE" driver.*

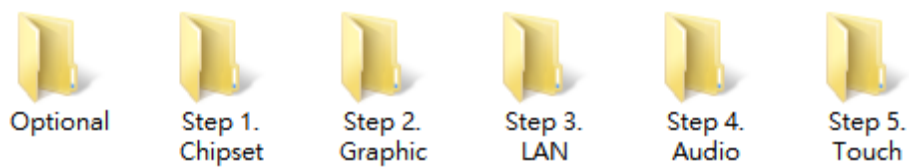


## CHAPTER 4 DRIVERS INSTALLATION

### 4.1 System

GOT3846T-832 supports Windows 7, WES and WES 7. To facilitate the installation of system driver, please carefully read the instructions in this chapter before start installing.

1. Insert Driver CD and select the “\Drivers”.



2. Select all files and follow the installing procedure.

## 4.2 Touch Screen

The GOT3846T-832 uses the 5-wire analog resistive. There are the specification and driver installation which are listed below.

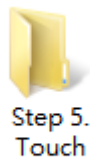
### 4.2.1 Specification

Touch Screen	5-wire Analog Resistive type
Touch Screen Controller	PenMount 6000 USB Touch Screen Controller IC
Communications	USB interface
Baud Rate	19200 baud rate fixed
Resolution	800 x 600
Power Input	5V
Power Consumption	Active: 24.6mA / Idle Mode: 13.4mA

### 4.2.2 Driver Installation- Windows 7

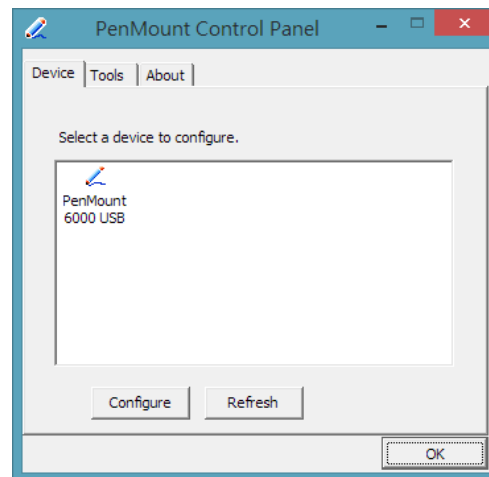
The GOT3846T-832 provides a touch screen driver that users can install it under the operating system Windows 7. To facilitate installation of the touch screen driver, you should read the instructions in this chapter carefully before you attempt installation.

1. Insert Driver CD and follow the path to select the “\Drivers\Step 5 - Touch”.



2. Follow the installing procedure and press OK.

3. Click Start menu and select “PenMount Utilities”; and then, a “PenMount Control Panel” pops out.

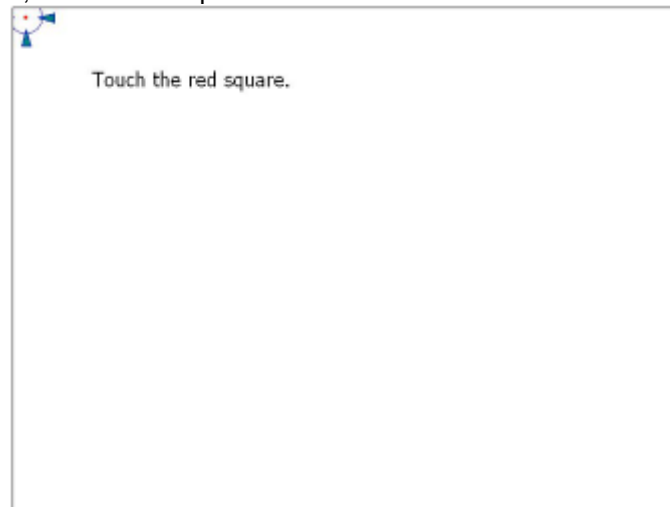


4. Select the “Standard Calibrate” tab.



5. Calibration:

To adjust the display with touch panel, click "Calibration" and follow the calibrate point to do calibration; there are five points on screen for calibration.



6. Press OK.



**Note:** *The windows may be out of rang, because the resolution requests 1024x768 or above when using WIN 7.*



**Note:** *For the better system performance, please close the Windows AERO or change to Windows Basic mode.*

### 4.3 Embedded O.S.

The GOT3846T-832 provides the Windows 7 Embedded. The O.S. is supported devices which are listed below.

#### WES/WES 7

Here are supported onboard devices:

- Onboard Multi I/O
- SATA HDD
- USB
- CRT/LCD display
- 10/100/1000 base-T Ethernet
- Compact Flash
- Onboard Audio
- Touch Screen

#### PenMount Touch screen

Before you can use and calibrate it, here is what you should do:

1. Set up Penmount touch device driver by executing C:\Penmount\ Windows 2000-XP V5.0\setup.exe. When the installation is finished, an icon "PM" appears on the Taskbar.
2. Calibrate Penmount touch by clicking on the "PM" icon, and the go on the calibration.
3. Restart the computer.

Please be informed if you use the Windows XP OS, the graphic driver supported by Intel is EMGD, there are three known issues as below:



**Note:** *The Intel EMGD package does not include an HDMI audio driver, there will be an unknown device under device manager.*



**Note:** *3D function is not supported.*



**Note:** *LVDS and CRT can't be disabled at the same time.*

**This page is intentionally left blank.**