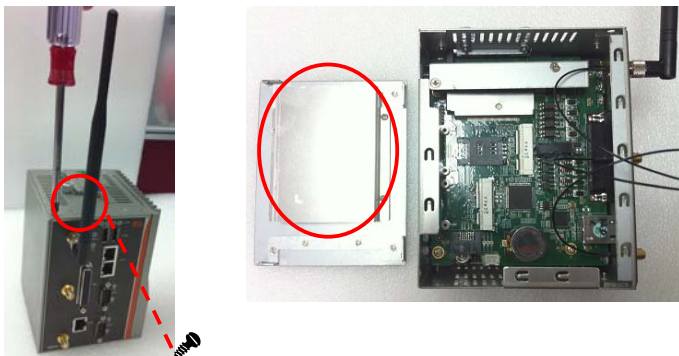
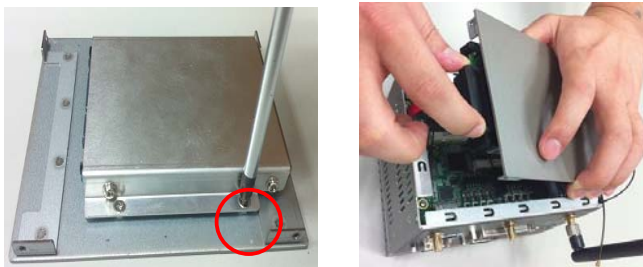


Installing the Hard Disk Drive

- Step 1** Turn off the system.
- Step 2** Loosen these screws, and remove the cover from the system.
- Step 3** Loosen these screws and remove the Hard Disk Drive fixing bracket.



- Step 4** Insert the Hard Disk Drive into the socket until it is firmly seated. Put the Hard Disk Drive fixing bracket back to the system, and fasten screws tight close the Hard Disk Drive fixing bracket.



- Step 5** Put the cover back to the system, and fasten screws tight close the chassis.

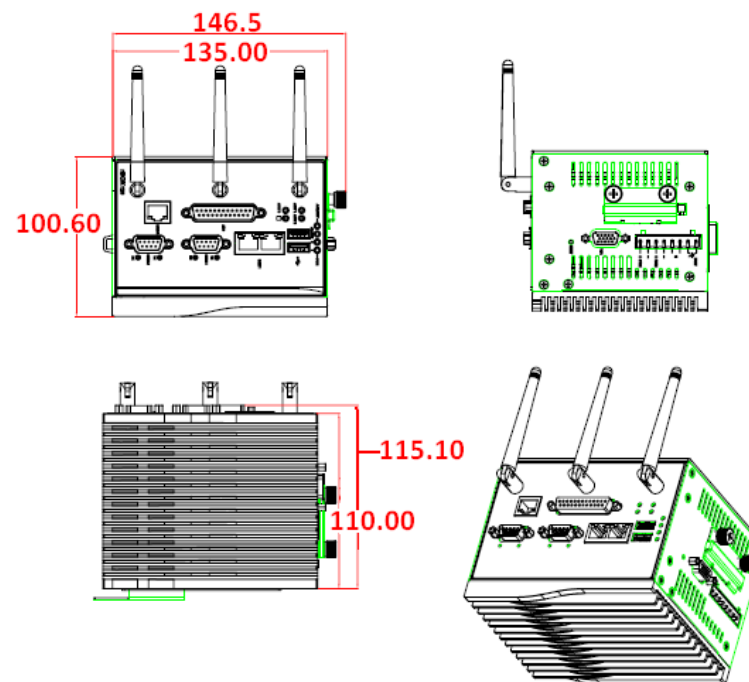
rBOX120-FL Quick Installation Guide

Checklist

- | | |
|---|---|
| ✓ rBOX120-FL System Unit x 1 | ✓ Power terminal block |
| ✓ rBOX120-FL Quick Installation Guide x 1 | ✓ CD x 1 (for Driver and User's Manual) |
| ✓ Screws | ✓ Din-rail Kit x1 |

Note: Please contact your local vendors if any damaged or missing items.

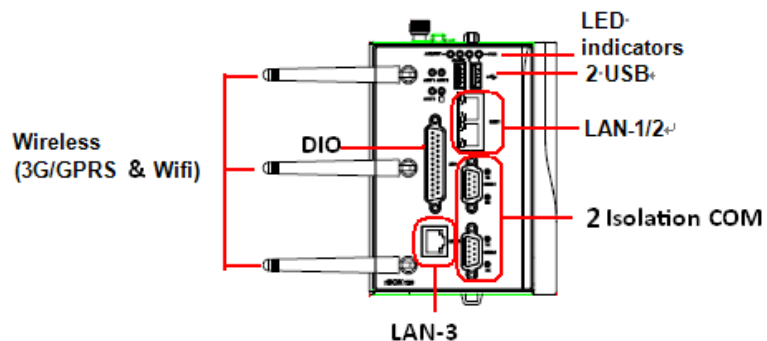
Dimensions



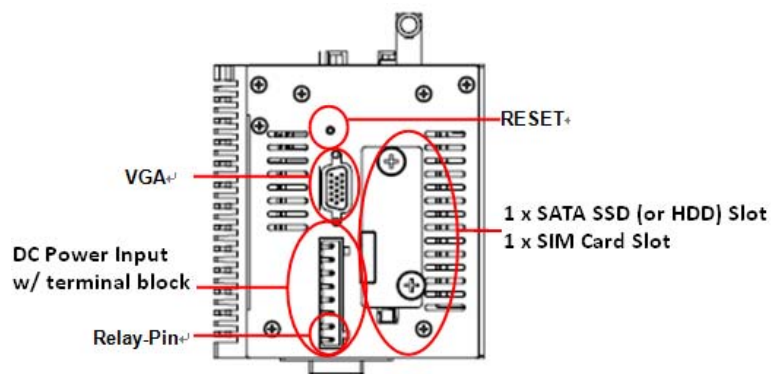
I/O Outlets

The following figures show you I/O outlets on front view and top view of the rBOX120-FL.

• Front View



• Top View



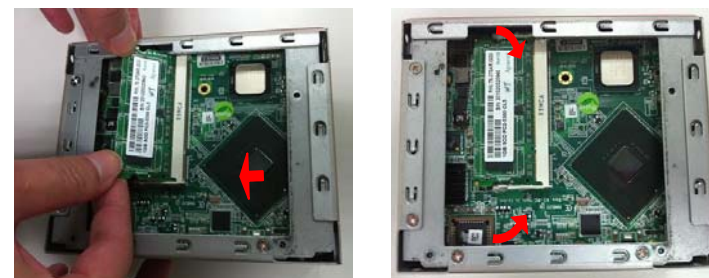
Installing the Memory Module

Step 1 Turn off the system.

Step 2 Loosen these screws, and remove the top cover from the system.



Step 3 Hold one side of the module, and insert the gold colored contact into the socket. Push the module down. The memory module is locked by two latches on the sides.



Step 4 Close the cover to the chassis, and fasten all screws.